



BP LIFTS

By Barker Products
1310 Miller Road, Greenville, SC 29607
Phone:800-349-3149—Fax:864-297-1292



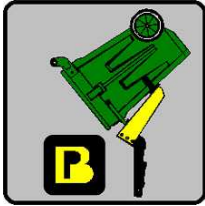
Model BPC-614S LIFT



- Meets ANSI Z245 Type B Specifications
- Powered By a 2 1/2" Bore Hydraulic Cylinder With Cushions On Both Ends
- EZ Bolt On Kit Standard
- Hardened Steel Bearings For Long Life Cycle
- No Grease Points
- Can Not Be Hit By The Packer Blade
- Kickout Feature Protects Lifter From Ground Damage
- Modular Bolted Construction For Ease Of Part Replacement
- Non Adjustable Lower Hook Linkage

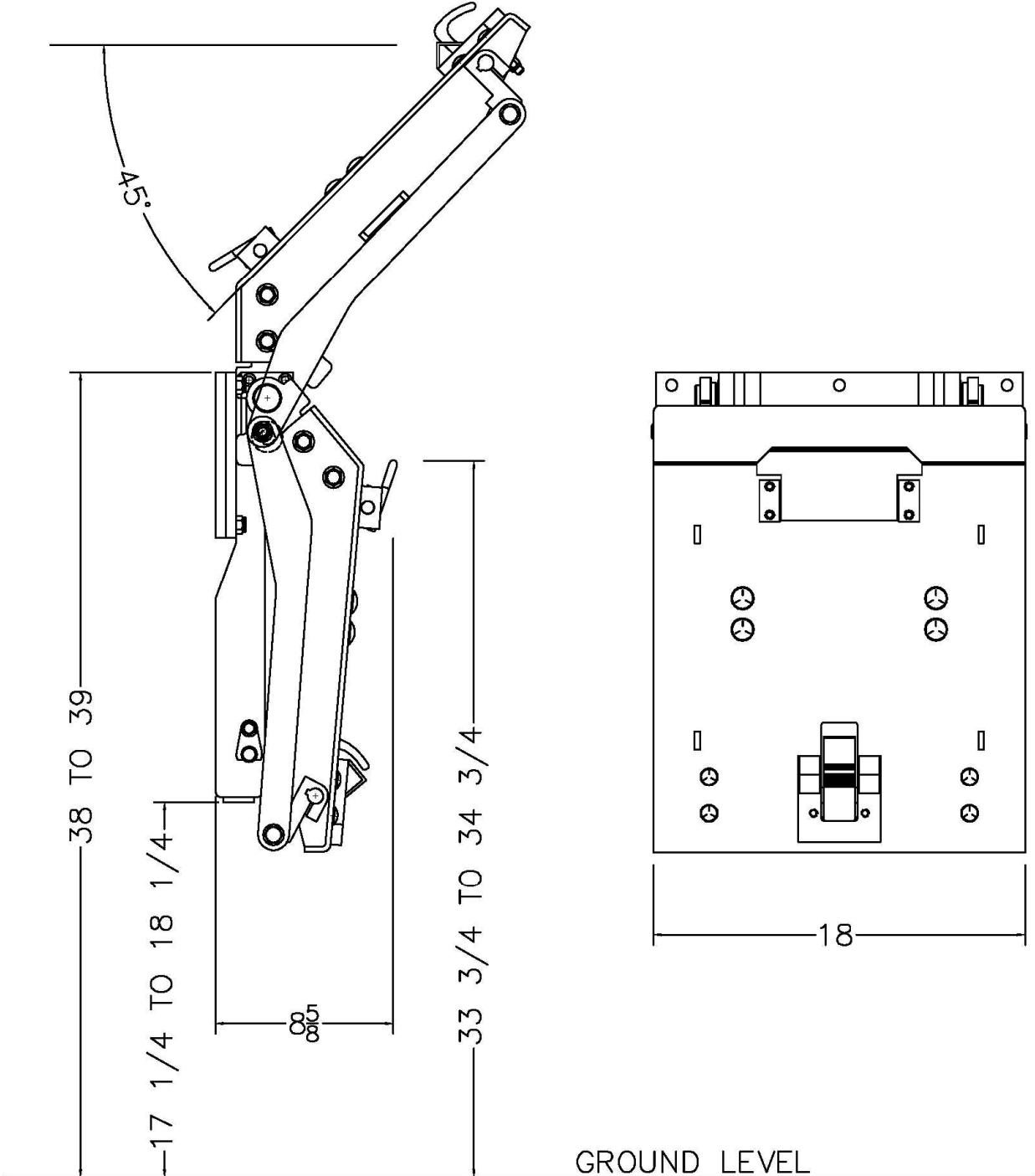


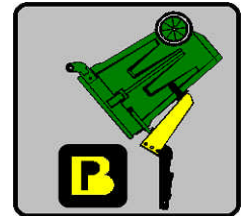
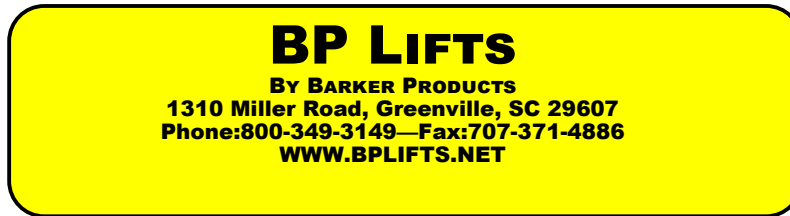
BP LIFTS
BY BARKER PRODUCTS
1310 Miller Road, Greenville, SC 29607
Phone:800-349-3149—Fax:864-297-1292



BPC-614SN38

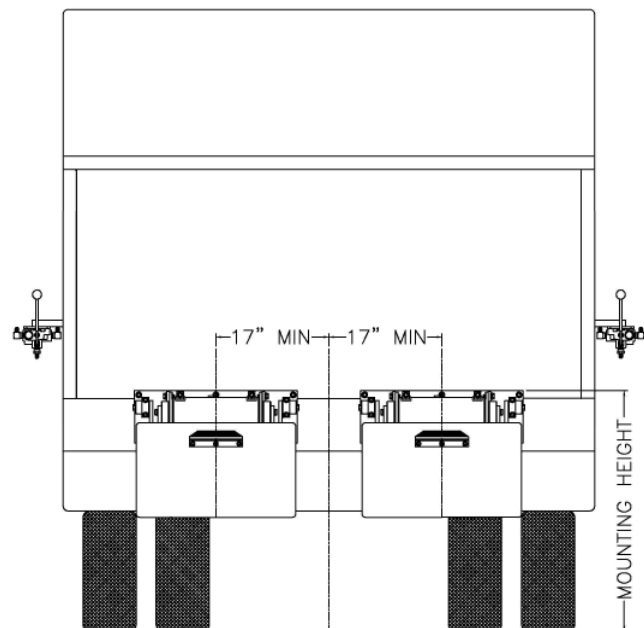
ENVELOPE DIMENSIONS





BPC-614SN Lift Unit Installation

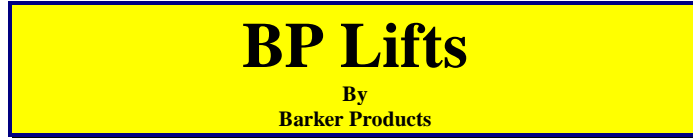
1. Truck must be empty, clean and parked on a level surface before installation is started.
2. Remove all bumpers and running boards that will interfere with the location of the lift units. Relocate lower mounted tail lights as needed.
3. Measure and mark the centerline of the truck hopper. The centerline of the unit or units should be a minimum of 17" from the hopper centerline.
4. Hand valves should be mounted on the side of the hopper at the most convenient height for the operator and clear of the packer controls.
5. The top of the unit mounting plate should be tack welded in place at the height recommended on the envelope dimension sheet of the unit.
CAUTION: SEE NOTE BELOW PICTURE
6. All dimensions should be approved by the customer before final welding.
7. If the mounting plate extends more than 2" above the hopper, a brace should be added.
8. Pressure must be set at 1200PSI minimum to 1400 maximum PSI.
9. Speed must be set to minimum 8 seconds total cycle time.



Mounting heights and locations are recommendations only. It is the responsibility of the installer to insure that the customer is satisfied with the height. Barker Products recommends that after the units are tacked in place, try the units with the can or cans the customer uses. The customer should approve your mount before final welding.



1310 Miller Road
Greenville, SC 29607



Lift Unit Specialist



Phone: 864-288-7384
Fax: 864-297-1292

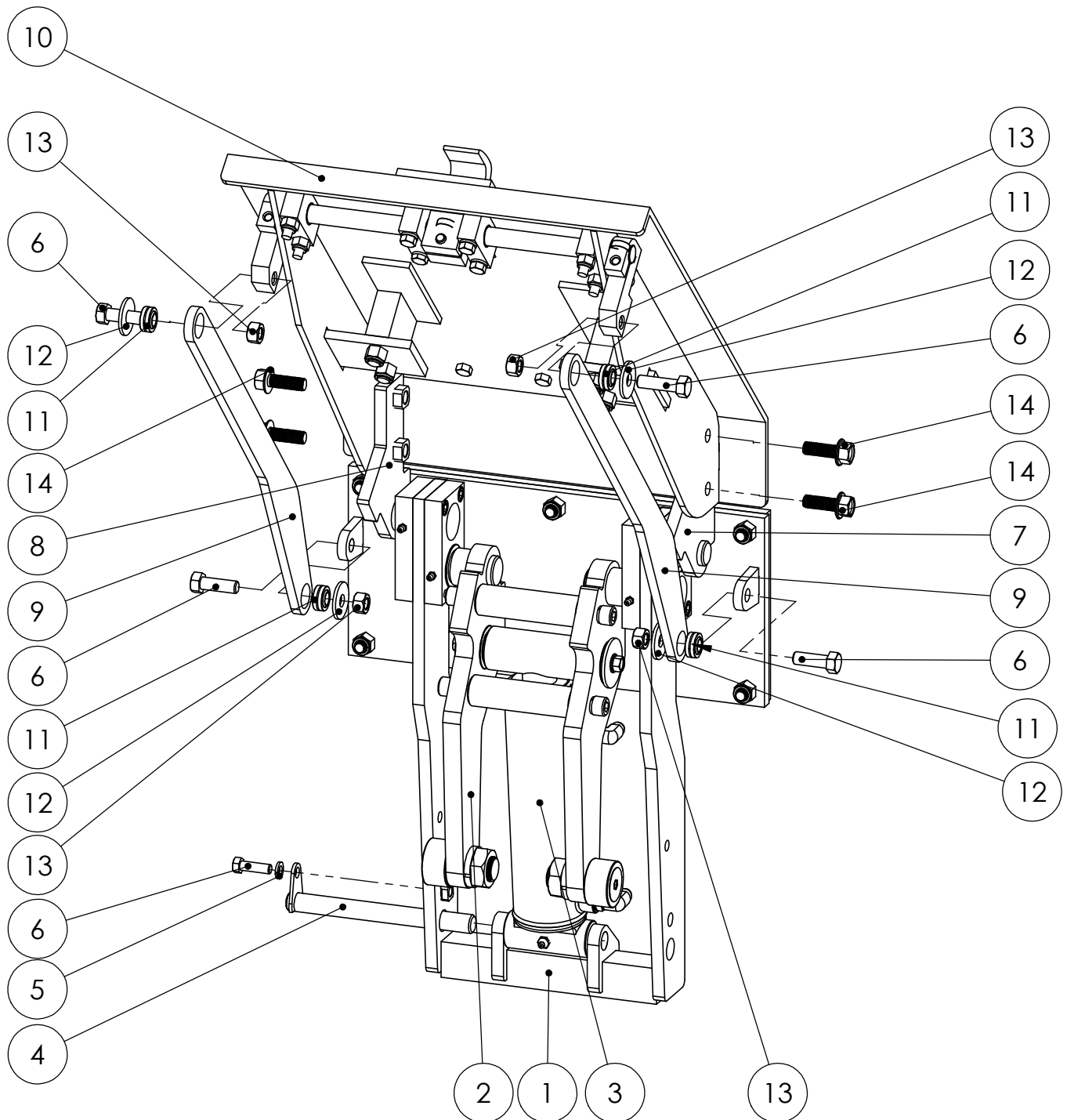
BU022XX-BPC-614SN LIFT UNIT WARRANTY

Barker Products warranties each new dump unit to be free of defects in material and workmanship under normal use and service for a period of 1 year or 2000 hours of operation, whichever comes first, from the date of delivery. Pressure must be set to 1200 to maximum 1400 PSI. Speed must be set to 8 seconds minimum complete cycle time.

This warranty excludes any obligations by BARKER PRODUCTS for the cost of down time. BARKER PRODUCTS will not warranty any dump unit which has been subject to misuse, neglect, alteration, or damaged by an accident.

On any work not performed by BARKER PRODUCTS or it's representative, the customer will be responsible for freight charges on all parts shipped under warranty. Parts will be invoiced at time of shipment. Defective parts must be returned to BARKER PRODUCTS within 30 days. If the part is determined to be defective the customer will be credited for the original invoice.

Customer warranty labor charges must be approved by BARKER PRODUCTS in advance. If not contacted for approval, BARKER PRODUCTS will not be liable for the warranty labor charge.



BARKER PRODUCTS
 1310 MILLER ROAD
 GREENVILLE, SC
 29607

DRAWN BY: R WYMAN
 DATE: 10/31/2018
 MATERIAL: NOTED

DO NOT SCALE
 DRAWING
 UNLESS OTHERWISE SPECIFIED:
 DIMENSIONS ARE IN INCHES
 TOLERANCES:
 FRACTIONAL $\pm 1/32$
 ANGULAR: MACH $\pm 1^\circ$ BEND $\pm 1^\circ$
 TWO PLACE DECIMAL ± 0.010
 THREE PLACE DECIMAL ± 0.005

BPC-614SN38 LIFT

DRAWING NO BU02238 PARTS	REV 00
SCALE: 1:6	WEIGHT: 164.375 # SHEET 1 OF 2

ITEM NO.	PART NUMBER	DESCRIPTION	QTY.
1	BWA17710	MAINFRAME SUB ASSY 614SN	1
2	BWA17760	LIFT ARM SUB ASSY 614SN	1
3	BWA17460	CYLINDER SUB ASSY	1
4	BW17780	CYLINDER MOUNT PIN	1
5	XEB061000	3/8" LOCK WASHER	1
6	XAA081312	1/2-13 X 1 1/2 HHCS	5
7	BW17740	RIGHT LP MOUNT 614S	1
8	BW17730	LEFT LP MOUNT 614S	1
9	BW17820	HOOK LINK 614SN 38	2
10	BWA17840	LIFT PLATE SUB ASSY 614S	1
11	BW99108	1/2" SPHERICAL BEARING	4
12	XEA082412SS	FLAT WASHER 1/2 X 1 1/2 X 1/8	4
13	XDA081300	1/2-13 HEX NUT	4
14	XAE081312	1/2-13 X 1 1/2 FLANGED HHCS	4

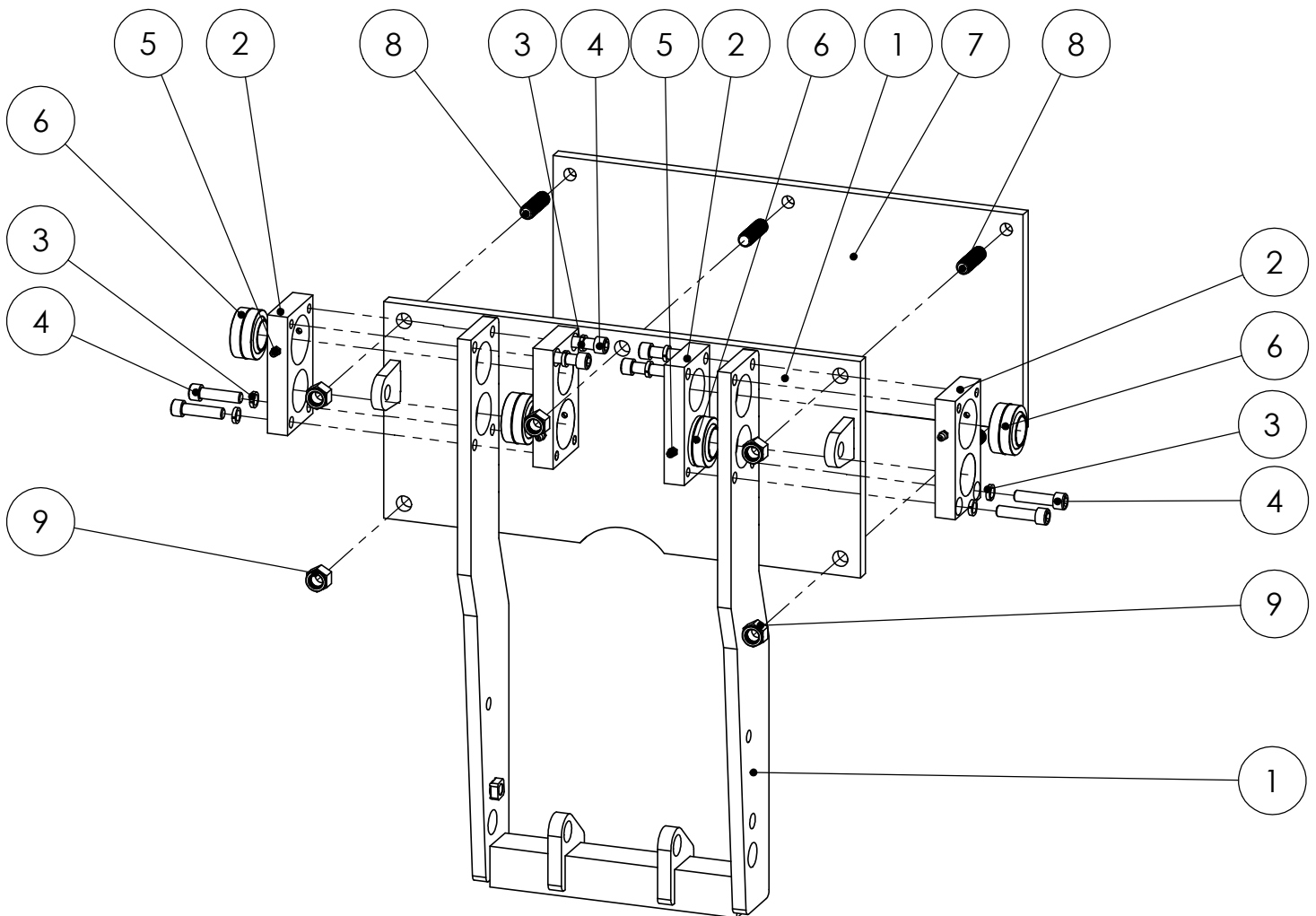


BARKER PRODUCTS
1310 MILLER ROAD
GREENVILLE, SC
29607

DRAWN BY: R WYMAN
DATE: 10/31/2018
MATERIAL: NOTED

DO NOT SCALE DRAWING		BPC-614SN38 LIFT	
UNLESS OTHERWISE SPECIFIED: DIMENSIONS ARE IN INCHES TOLERANCES: FRACTIONAL ±1/32 ANGULAR: MACH ±1° BEND ±1° TWO PLACE DECIMAL ±0.010 THREE PLACE DECIMAL ±0.005		DRAWING NO BU02238 PARTS	REV 00
		SCALE: 1:6	WEIGHT: 164.375 # SHEET 2 OF 2

ITEM NO.	PART NUMBER	DESCRIPTION	QTY.
1	BW17710	MAINFRAME 614S	1
2	BW17720	BEARING MOUNT 614	4
3	XEC0606080	3/8 HIGH COLLAR LOCK WASHER	8
4	XAB061612	3/8-16 X 1 1/2 SHCS	8
5	BW01110	GREASE FITTING - 1/4-28 SHORT	4
6	BW99116	SPHERICAL BEARING 1"	4
7	BW17525	MOUNT PLATE - N	1
8	BW07140	PLATE STUD	5
9	XDC082000	1/2-20 NYLOK NUT	5



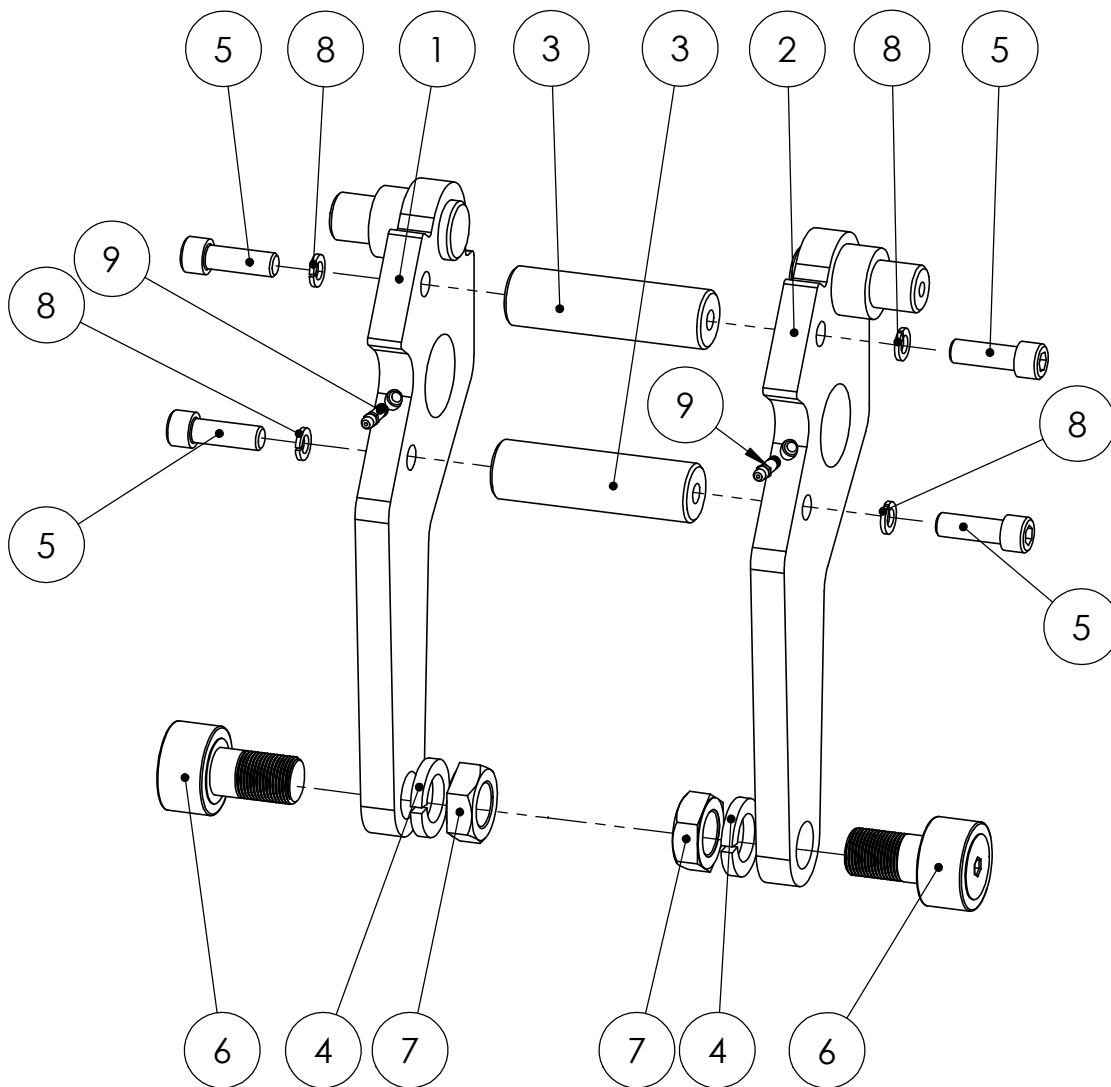
DO NOT SCALE DRAWING		MAINFRAME SUB ASSY 614SN	
UNLESS OTHERWISE SPECIFIED: DIMENSIONS ARE IN INCHES TOLERANCES: FRACTIONAL ±1/32 ANGULAR: MACH ±1° BEND ±1° TWO PLACE DECIMAL ±0.010 THREE PLACE DECIMAL ±0.005		DRAWING NO BWA17710	REV 00
SCALE: 1:6		WEIGHT: 67.973 #	SHEET 1 OF 1



BARKER PRODUCTS
1310 MILLER ROAD
GREENVILLE, SC
29607

DRAWN BY: R WYMAN
DATE: 10/26/2018
MATERIAL: NOTED

ITEM NO.	PART NUMBER	DESCRIPTION	QTY.
1	BW17760	LEFT LIFT ARM	1
2	BW17770	RIGHT LIFT ARM	1
3	BW17750	LIFT ARM SPACER	2
4	XEB161000	1" LOCKWASHER	2
5	XAB081312	1/2-13 X 1 1/2 SHCS	4
6	BW99030	1 7/8 CAM FOLLOWER	2
7	XDB161400	1"-14 HEX JAM NUT	2
8	XEB081000	1/2" LOCKWASHER	4
9	BW01115	GREASE FITTING - 1/4-28 LONG	2

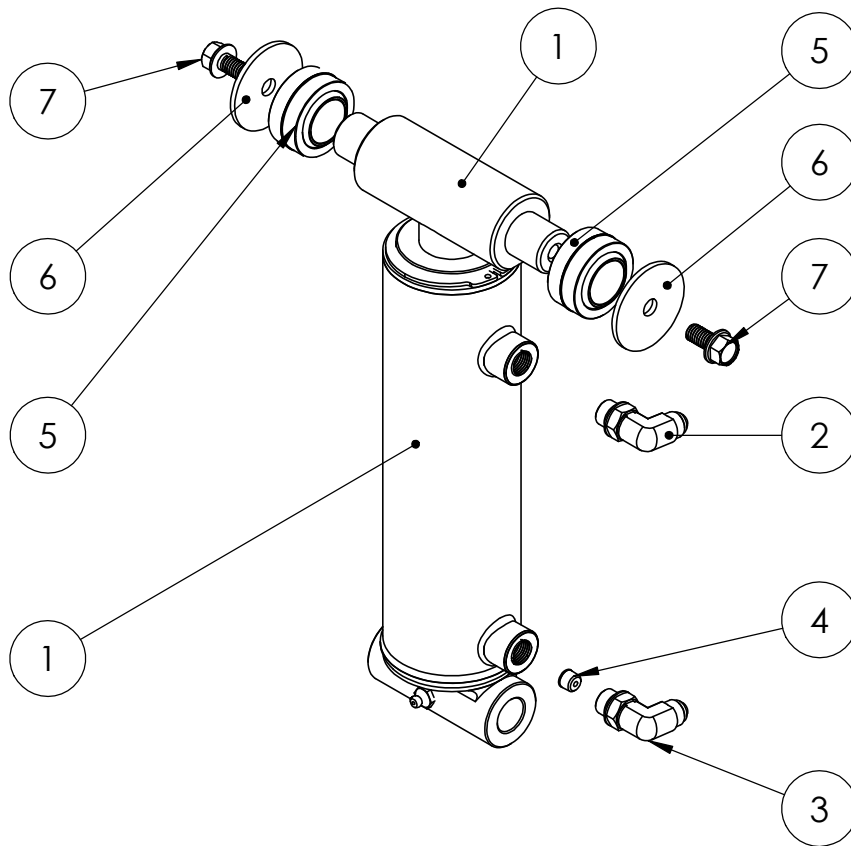


DO NOT SCALE DRAWING		LIFT ARM SUB ASSY	
UNLESS OTHERWISE SPECIFIED: DIMENSIONS ARE IN INCHES TOLERANCES: FRACTIONAL ±1/32 ANGULAR: MACH ±1° BEND ±1° TWO PLACE DECIMAL ±0.010 THREE PLACE DECIMAL ±0.005		614SN	
DRAWN BY: R WYMAN		DRAWING NO BWA17760 PARTS	
DATE: 3/18/2019		REV 00	
MATERIAL: NOTED		SCALE: 1:4	WEIGHT: 20.364 # SHEET 1 OF 1



BARKER PRODUCTS
1310 MILLER ROAD
GREENVILLE, SC
29607

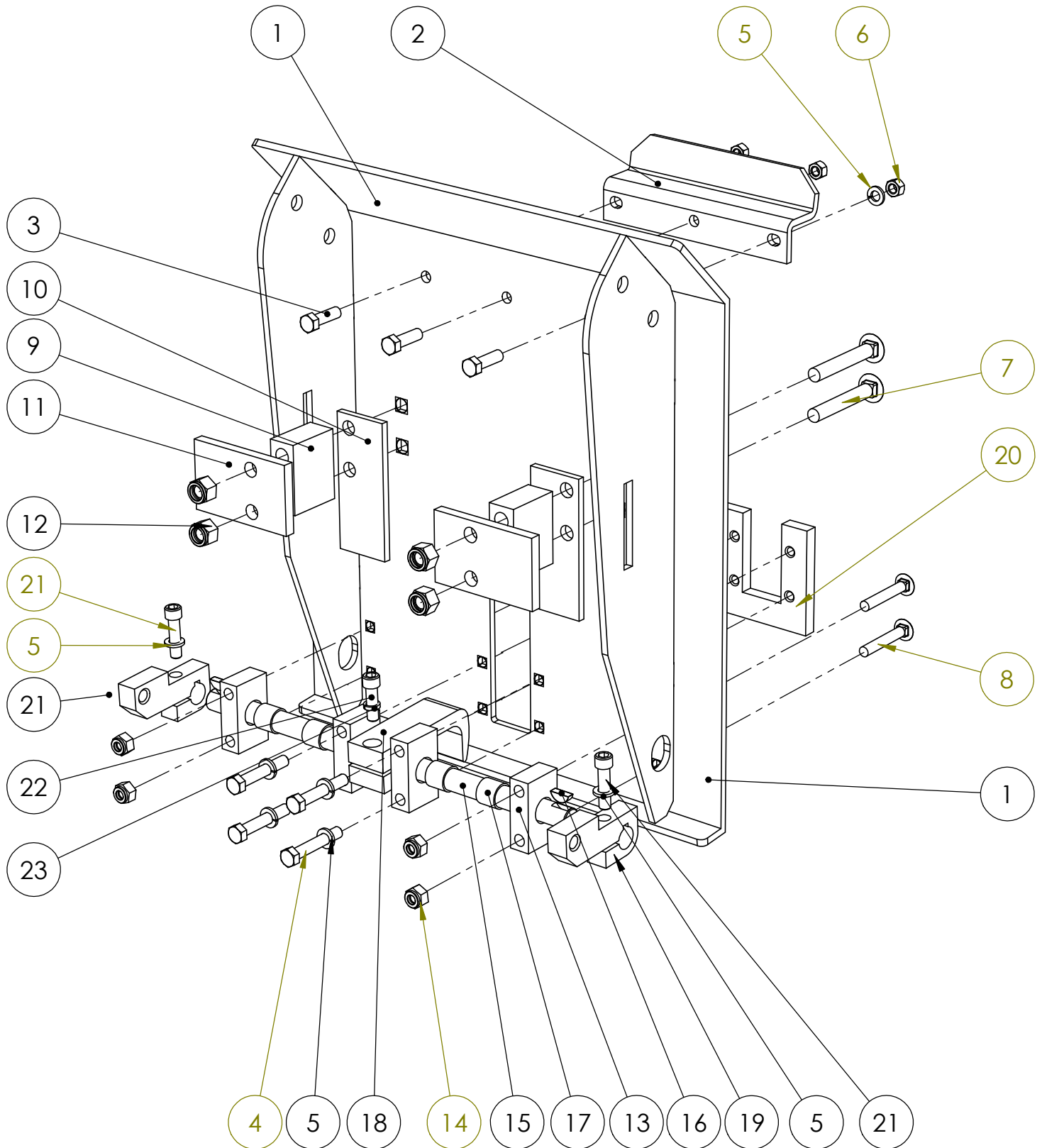
ITEM NO.	PART NUMBER	DESCRIPTION	QTY.
1	BW17460	HYDRAULIC CYLINDER 2 1/2 X 6	1
2	BR05210	6801-06-06 ADAPTER	1
3	BV00062	ORIFICE ADAPTER	1
4	BV00025	116 X 1/8 NPT ORIFICE PLUG	1
5	BW99116	SPHERICAL BEARING 1"	2
6	XEA063212SS	FLAT WASHER 3/8 X 2 X 1/8	2
7	XAE061606	3/8-16 X 3/4 FLANGED HHCS	2



DO NOT SCALE DRAWING		CYLINDER SUB ASSY	
UNLESS OTHERWISE SPECIFIED: DIMENSIONS ARE IN INCHES TOLERANCES: FRACTIONAL ±1/32 ANGULAR: MACH ±1° BEND ±1° TWO PLACE DECIMAL ±0.010 THREE PLACE DECIMAL ±0.005		614SN	REV 00
DRAWN BY: R WYMAN		DRAWING NO BWA17460	
DATE: 3/19/2019		SCALE: 1:4	WEIGHT: 13.907 #
MATERIAL: NOTED		SHEET 1 OF 1	



BARKER PRODUCTS
1310 MILLER ROAD
GREENVILLE, SC
29607



BARKER PRODUCTS
 1310 MILLER ROAD
 GREENVILLE, SC
 29607

DRAWN BY: R WYMAN
 DATE: 10/30/2018
 MATERIAL: NOTED

DO NOT SCALE DRAWING		LIFT PLATE SUB ASSY	
UNLESS OTHERWISE SPECIFIED: DIMENSIONS ARE IN INCHES		614S38	
TOLERANCES:		DRAWING NO	
FRACTIONAL ±1/32		BWA17840 PARTS	
ANGULAR: MACH ±1° BEND ±1°		REV	
TWO PLACE DECIMAL ±0.010		00	
THREE PLACE DECIMAL ±0.005		SCALE: 1:4	WEIGHT: 55.833 #
		SHEET 1 OF 2	

ITEM NO.	PART NUMBER	DESCRIPTION	QTY.
1	BW17840	LIFT PLATE 614S38	1
2	BW00800	SADDLE	1
3	XAA061610	3/8-16 X 1 1/4 HHCS	3
4	XAA061618	3/8-16 X 2 1/4 HHCS	4
5	XEB061000	3/8" LOCK WASHER	9
6	XDA061600	3/8-16 HEX NUT	3
7	XAH081328	1/2-13 X 3 1/2 CARRIAGE BOLT	4
8	XAH061620	3/8-16 X 2 1/2 CARRIAGE BOLT	4
9	BW17790	TRACK BAR 614	2
10	BW17800	TRFACK PLATE 614	2
11	BW17810	TRACK CAP 614	2
12	XDC081300	1/2-13 NYLOK NUT	4
13	BW17130	HOOK BEARING MOUNT	4
14	XDC061600	3/8-16 NYLOK NUT	4
15	BW03460	HOOK SHAFT	1
16	BW07560	WOODRUFF KEY #806	3
17	BW03195	12-DU-12 BEARING	4
18	BW07490	HOOK	1
19	BW06780	HOOK DRIVE	2
20	BZ03451	SUPPORT PLATE	1
21	XAB061612	3/8-16 X 1 1/2 SHCS	2
22	XAB061610	3/8-16 X 1 1/4 SHCS	1
23	XEC0606080	3/8 HIGH COLLAR LOCK WASHER	1



BARKER PRODUCTS
1310 MILLER ROAD
GREENVILLE, SC
29607

DRAWN BY: R WYMAN
DATE: 10/30/2018
MATERIAL: NOTED

DO NOT SCALE
DRAWING
UNLESS OTHERWISE SPECIFIED:
DIMENSIONS ARE IN INCHES
TOLERANCES:
FRACTIONAL ±1/32
ANGULAR: MACH ±1° BEND ±1°
TWO PLACE DECIMAL ±0.010
THREE PLACE DECIMAL ±0.005

LIFT PLATE SUB ASSY
614S38

DRAWING NO
BWA17840 PARTS

REV
00

SCALE: 1:4 WEIGHT: 55.833 # SHEET 2 OF 2