



BP LIFTS

By Barker Products
1310 Miller Road, Greenville, SC 29607
Phone:800-349-3149—Fax:864-297-1292



Model BPC602 A LIFT



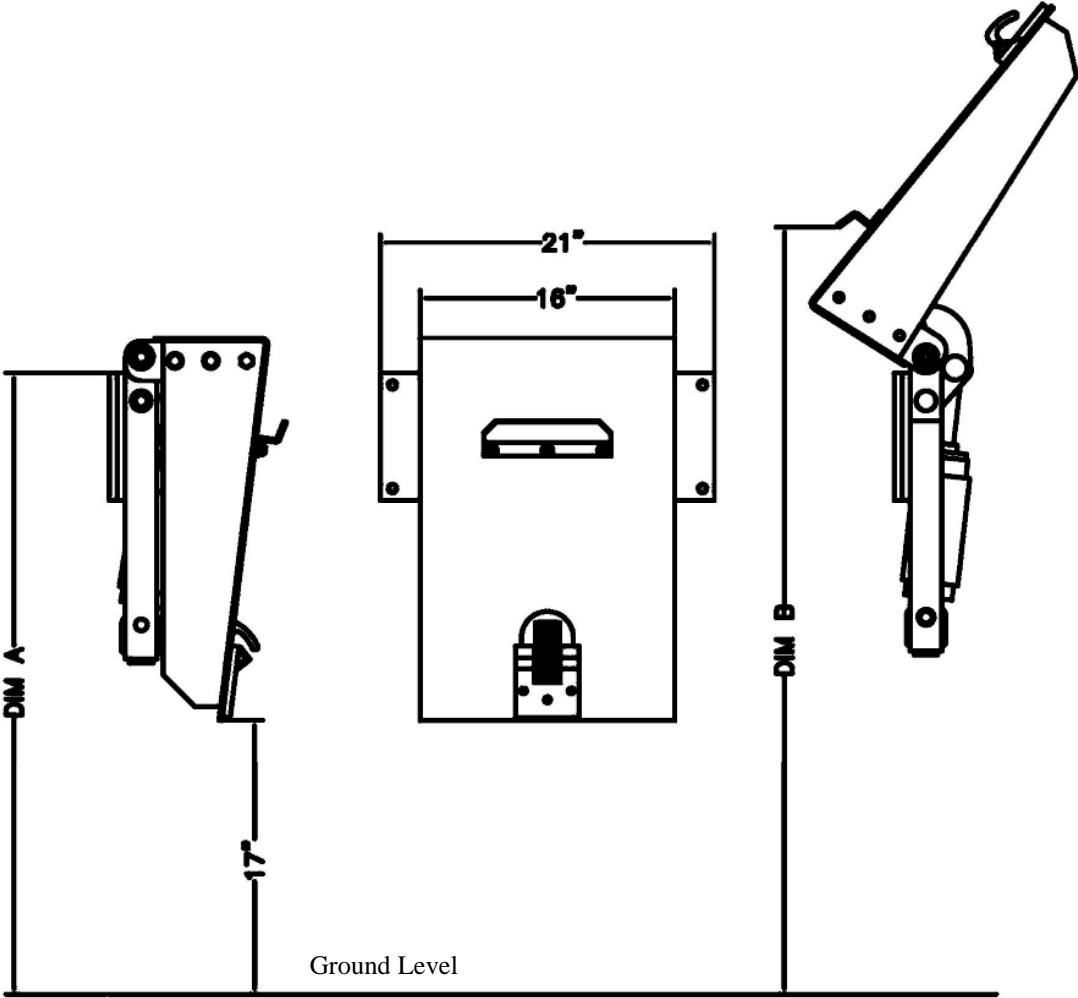
- Meets ANSI Z245 Type B Specifications
- Powered By a 3" Bore Hydraulic Cylinder
- EZ Bolt On Kit Standard
- Heavy Duty Cast Iron Bushings For Long Life Cycle
- Kickout Feature Protects Lifter From Ground Damage
- Modular Bolted Construction For Ease Of Part Replacement



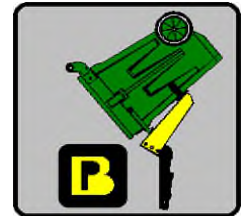
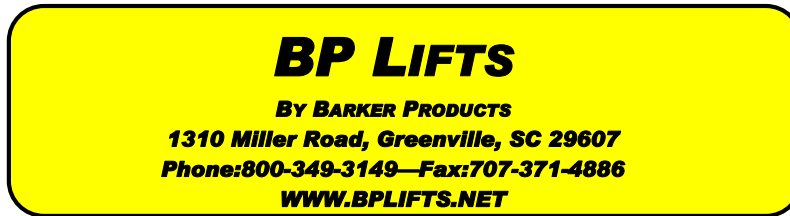
BP LIFTS
By Barker Products
1310 Miller Road, Greenville, SC 29607
Phone:800-349-3149—Fax:864-297-1292



BPC602 Envelope Dimensions

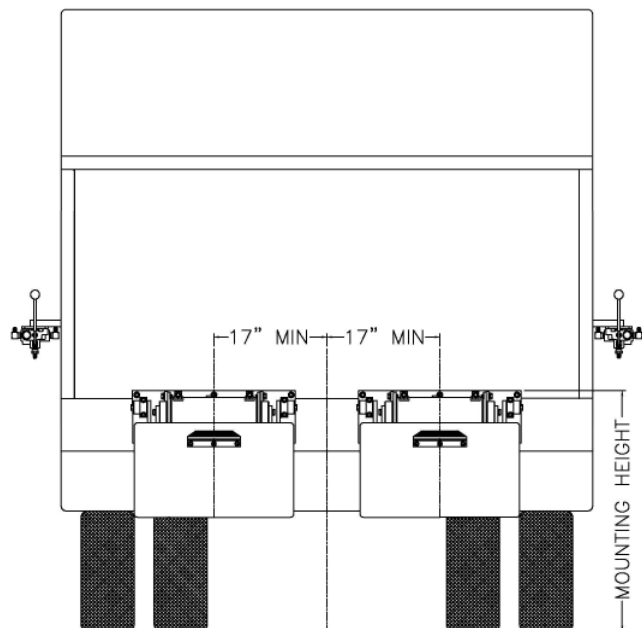


| Model | Dim A | Dim B" |
|----------|------------|------------|
| BPC-602A | 37" to 39" | 46" to 48" |



Lift Unit Installation

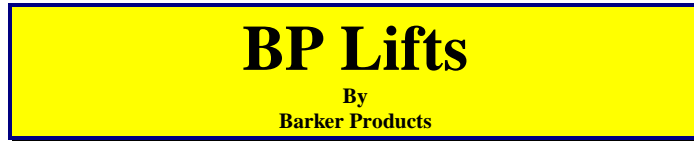
1. Truck must be empty, clean and parked on a level surface before installation is started.
2. Remove all bumpers and running boards that will interfere with the location of the lift units. Relocate lower mounted tail lights as needed.
3. Measure and mark the centerline of the truck hopper. The centerline of the unit or units should be a minimum of 17" from the hopper centerline.
4. Hand valves should be mounted on the side of the hopper at the most convenient height for the operator and clear of the packer controls.
5. The top of the unit mounting plate should be tack welded in place at the height recommended on the envelope dimension sheet of the unit.
CAUTION: SEE NOTE BELOW PICTURE
6. All dimensions should be approved by the customer before final welding.
7. If the mounting plate extends more than 2" above the hopper, a brace should be added.



Mounting heights and locations are recommendations only. It is the responsibility of the installer to insure that the customer is satisfied with the height. Barker Products recommends that after the units are tacked in place, try the units with the can or cans the customer uses. The customer should approve your mount before final welding.



1310 Miller Road
Greenville, SC 29607



Lift Unit Specialist



Phone: 864-288-7384
Fax: 707-371-4886

BPC-602 LIFT UNIT SPECIFICATIONS

1 MOUNTING BRACKET:

Unit will be bolted to mounting bracket for ease of repair or replacement.

2 HYDRAULIC CYLINDER:

Non adjustable cushions on both ends.

3 CART LIFTING CAPABILITY:

ANSI Type B (American 2 bar cart)

4 Major Pivot Points:

All major pivot points are 1 ¼" diameter and equipped with cast iron bushings and "Zerk" type grease fittings.

5 IMPACT RELEASE DEVICE:

The 602 has a mechanical kickout feature that allows the unit to release from the vertical (down) position when struck by the street surface while the truck is in forward motion. When fully activated the vertical ground clearance is improved by four (4) inches. Unit must reset automatically to lift position.

6 LIFT BAR POCKET:

The lift bar pocket (saddle) is designed to minimize cart free movement when unit is in the up position. Bolted on for ease of replacement if damaged.

7 MOUNTING HEIGHT:

With the truck in "Level" position, the measurement from the bottom of the lift bar pocket to ground level will be no less than 33" and no more than 35". The top of the mounting bracket will be at 37" to 39".

8 DUMP ANGLE:

The lift plate when fully raised, will be at no less than 135 degrees inclusive.

9 LIFT PLATE (LIFTING FRAME):

Constructed of 3/16" thick steel plate. Bolted on for ease of replacement if damaged. The lift plate will be painted safety yellow.

10 HOOK (LOWER BAR LATCH):

Mechanically operated to securely hold the cart in place even if it is shaken at the top. Rotating style with replaceable bronze bushings mounted on 3/4" diameter steel shaft. No sliding surfaces to wear out. Mounting bracket is bolted to the lift plate for ease of replacement if damaged.

11 CART LIFTING CAPACITY:

The 602 will lift a minimum of 350 pounds at 1800 PSI hydraulic pressure.



1310 Miller Road
Greenville, SC 29607

BP Lifts

By
Barker Products

Lift Unit Specialist



Phone: 864-288-7384
Fax: 864-297-1292

BPC-602 LIFT UNIT WARRANTY

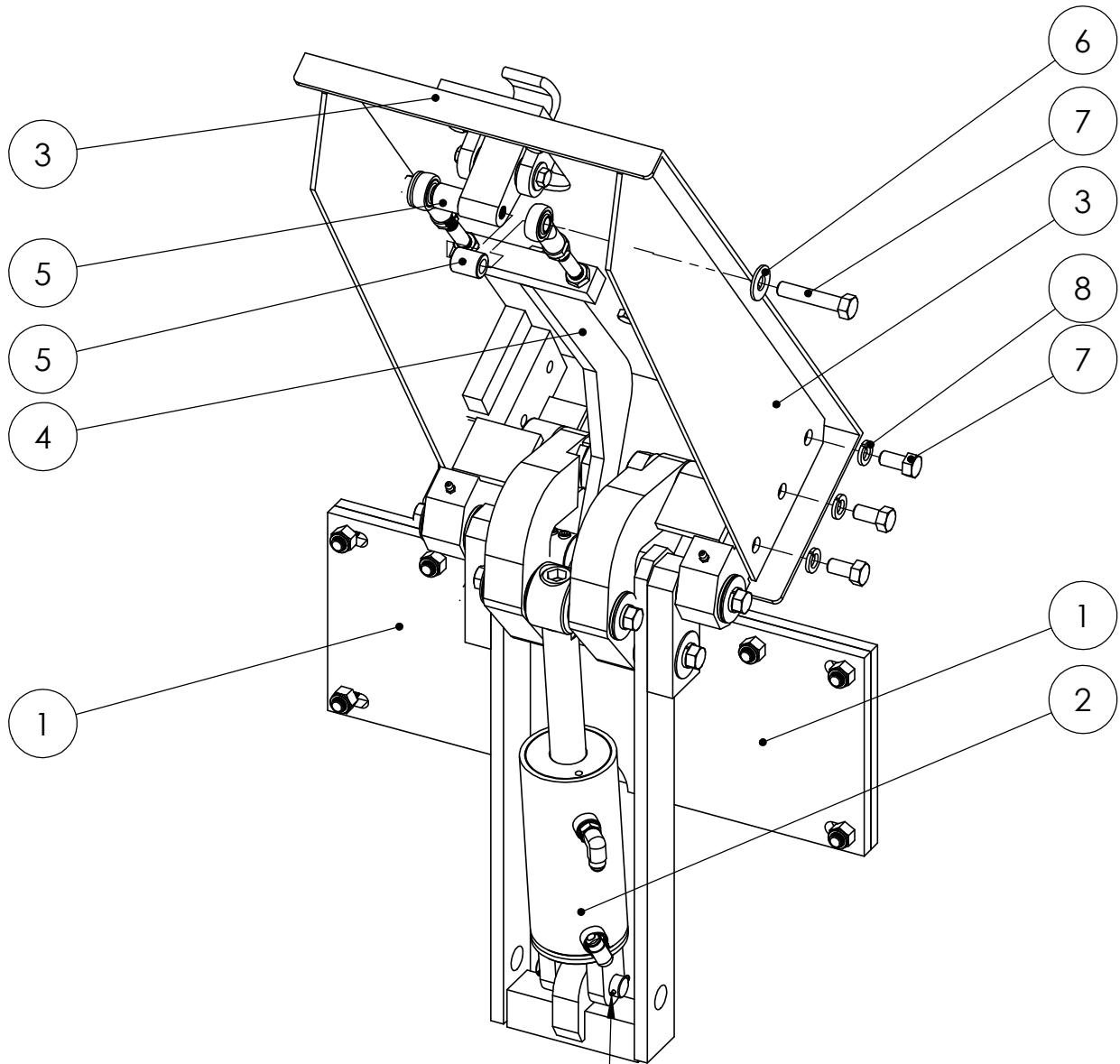
Barker Products warranties each new dump unit to be free of defects in material and workmanship under normal use and service for a period of 1 year or 2000 hours of operation, whichever comes first, from the date of delivery.

This warranty excludes any obligations by BARKER PRODUCTS for the cost of down time. BARKER PRODUCTS will not warranty any dump unit which has been subject to misuse, neglect, alteration, or damaged by an accident.

On any work not performed by BARKER PRODUCTS or it's representative, the customer will be responsible for freight charges on all parts shipped under warranty. Parts will be invoiced at time of shipment. Defective parts must be returned to BARKER PRODUCTS within 30 days. If the part is determined to be defective the customer will be credited for the original invoice.

Customer warranty labor charges must be approved by BARKER PRODUCTS in advance. If not contacted for approval, BARKER PRODUCTS will not be liable for the warranty labor charge.

| ITEM NO. | PART NUMBER | DESCRIPTION | QTY. |
|----------|-------------|---------------------|------|
| 1 | BWA00700 | MAINFRAME SUB ASSY | 1 |
| 2 | BWA00870 | CYLINDER SUB ASSY | 1 |
| 3 | BWA00710 | LIFT PLATE SUB ASSY | 1 |
| 4 | BWA00790 | HOOK LINK SUB ASSY | 1 |
| 5 | BW00840 | HOOK SPACER | 2 |
| 6 | XEA081000 | 1/2" FLAT WASHER | 2 |
| 7 | XAA081308 | 1/2-13 X 1 HHCS | 8 |
| 8 | XEB081000 | 1/2" LOCK WASHER | 6 |

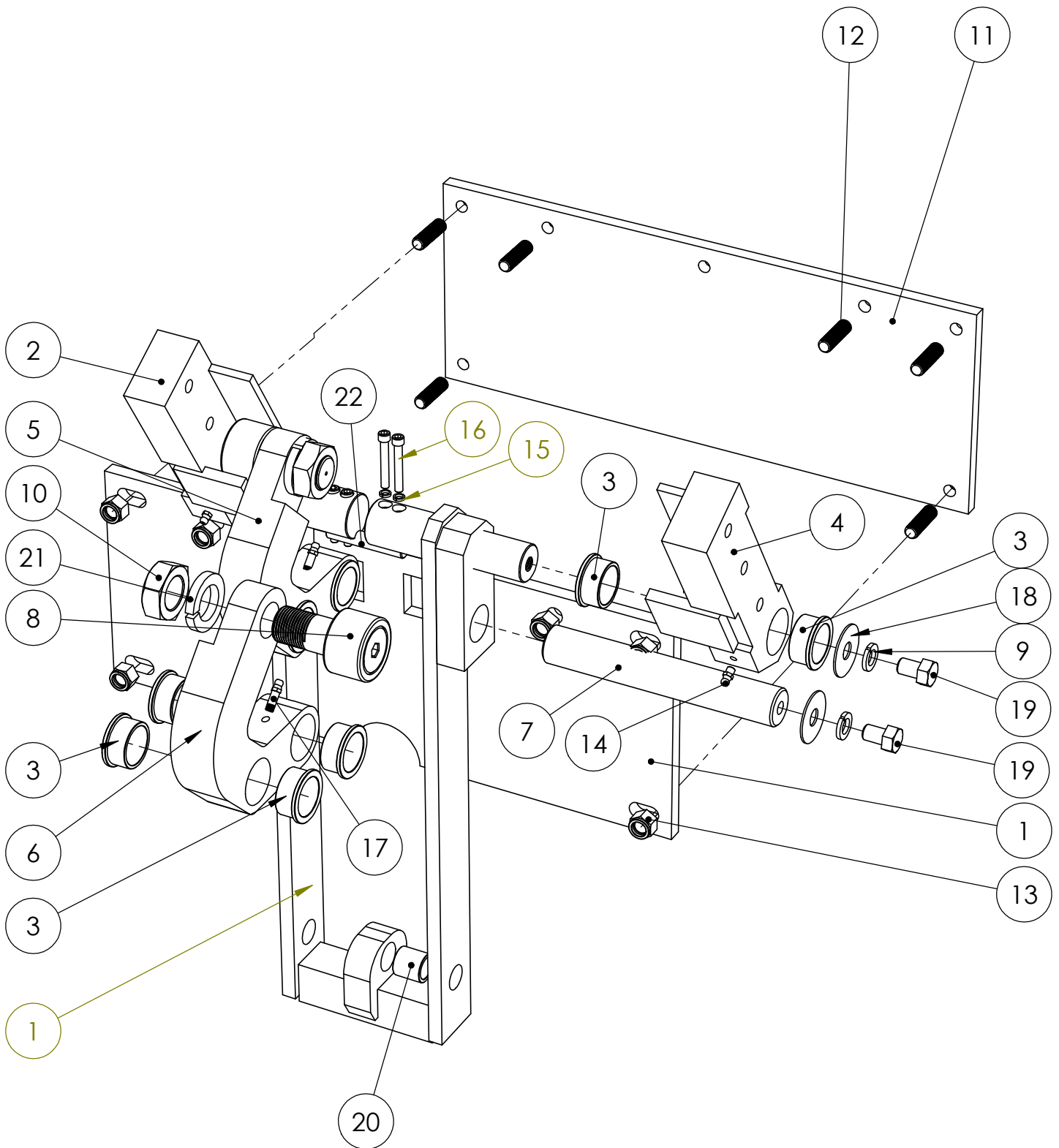


| | | |
|---|-----------------------------|--------------|
| DO NOT SCALE DRAWING | BPC-602A | |
| UNLESS OTHERWISE SPECIFIED: DIMENSIONS ARE IN INCHES TOLERANCES: FRACTIONAL $\pm 1/32$ ANGULAR: MACH $\pm 1^\circ$ BEND $\pm 1^\circ$ TWO PLACE DECIMAL ± 0.010 THREE PLACE DECIMAL ± 0.005 | DRAWING NO BU03000 PARTS | REV 00 |
| SCALE: 1:6 | WEIGHT: 165.298 # | SHEET 1 OF 1 |



BARKER PRODUCTS
1310 MILLER ROAD
GREENVILLE, SC
29607

DRAWN BY: R WYMAN
DATE: 12/6/2018
MATERIAL: NOTED



BARKER PRODUCTS
 1310 MILLER ROAD
 GREENVILLE, SC
 29607

DRAWN BY: R WYMAN
 DATE: 12/5/2018
 MATERIAL: NOTED

DO NOT SCALE
 DRAWING
 UNLESS OTHERWISE SPECIFIED:
 DIMENSIONS ARE IN INCHES
 TOLERANCES:
 FRACTIONAL $\pm 1/32$
 ANGULAR: MACH $\pm 1^\circ$ BEND $\pm 1^\circ$
 TWO PLACE DECIMAL ± 0.010
 THREE PLACE DECIMAL ± 0.005

MAINFRAME SUB ASSY
 602

DRAWING NO
 BWA00700 PARTS

REV
 00

SCALE: 1:4 WEIGHT: 107.858 # SHEET 1 OF 2

| ITEM NO. | PART NUMBER | DESCRIPTION | QTY. |
|----------|-------------|-------------------------------|------|
| 1 | BW00700 | MAINFRAME | 1 |
| 2 | BW00740 | LEFT TRACK | 1 |
| 3 | BW00934 | CAST FLANGE BUSHING | 12 |
| 4 | BW00750 | RIGHTG TRACK | 1 |
| 5 | BW00720 | LEFT LIFT LINK | 1 |
| 6 | BW00730 | RIGHT LIFT LINK | 1 |
| 7 | BW00760 | LIFT LINK SHAFT | 1 |
| 8 | BW00900 | CAM FOLLOWER | 2 |
| 9 | XEB081000 | 1/2" LOCK WASHER | 4 |
| 10 | BW00910 | 1 1/8-12 HEX JAM NUT | 2 |
| 11 | BZ01001 | MOUNT PLATE | 1 |
| 12 | BW07140 | PLATE STUD | 6 |
| 13 | XDC082000 | 1/2-20 NYLOK NUT | 6 |
| 14 | BW01115 | GREASE FITTING - 1/4-28 LONG | 2 |
| 15 | XEC0406080 | 1/4" HIGH COLLAR LOCK WASHER | 4 |
| 16 | XAB042014 | 1/4-20 X 1 3/4 SHCS | 4 |
| 17 | BW01110 | GREASE FITTING - 1/4-28 SHORT | 2 |
| 18 | BW07115 | BEARING CAP WASHER | 4 |
| 19 | XAA081306 | 1/2-13 X 3/4 HHCS | 4 |
| 20 | BW00950 | BUSHING | 1 |
| 21 | BW00920 | 1 1/8 LOCK WASHER | 2 |
| 22 | BW00780 | HOOK LINK SHAFT | 1 |



BARKER PRODUCTS
1310 MILLER ROAD
GREENVILLE, SC
29607

DRAWN BY: R WYMAN
DATE: 12/5/2018
MATERIAL: NOTED

DO NOT SCALE
DRAWING
UNLESS OTHERWISE SPECIFIED:
DIMENSIONS ARE IN INCHES
TOLERANCES:
FRACTIONAL ±1/32
ANGULAR: MACH ±1° BEND ±1°
TWO PLACE DECIMAL ±0.010
THREE PLACE DECIMAL ±0.005

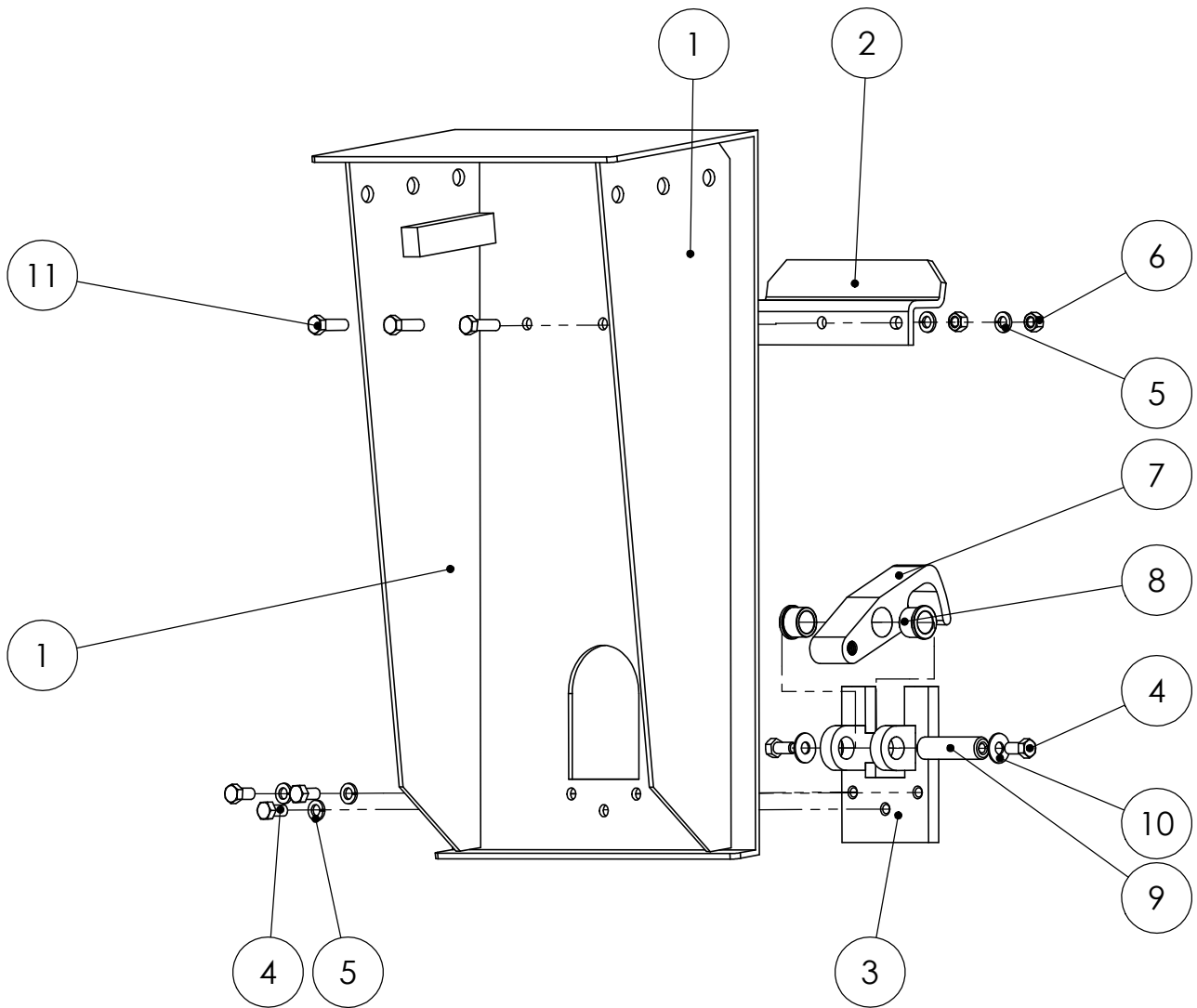
MAINFRAME SUB ASSY
602

DRAWING NO
BWA00700 PARTS

REV
00

SCALE: 1:4 WEIGHT: 107.858 # SHEET 2 OF 2

| ITEM NO. | PART NUMBER | DESCRIPTION | QTY. |
|----------|-------------|---------------------|------|
| 1 | BW00710 | LIFT PLATE | 1 |
| 2 | BW00800 | SADDLE | 1 |
| 3 | BW00815 | HOOK MOUNT | 1 |
| 4 | XAA061606 | 3/8-16 X 3/4 HHCS | 5 |
| 5 | XEB061000 | 3/8" LOCK WASHER | 6 |
| 6 | XDA061600 | 3/8-16 HEX NUT | 3 |
| 7 | BW00820 | HOOK | 1 |
| 8 | BW00940 | HOOK BEARING | 2 |
| 9 | BW00830 | HOOK SHAFT | 1 |
| 10 | XEA061000 | 3/8 FLAT WASHER | 2 |
| 11 | XAA061610 | 3/8-16 X 1 1/4 HHCS | 3 |



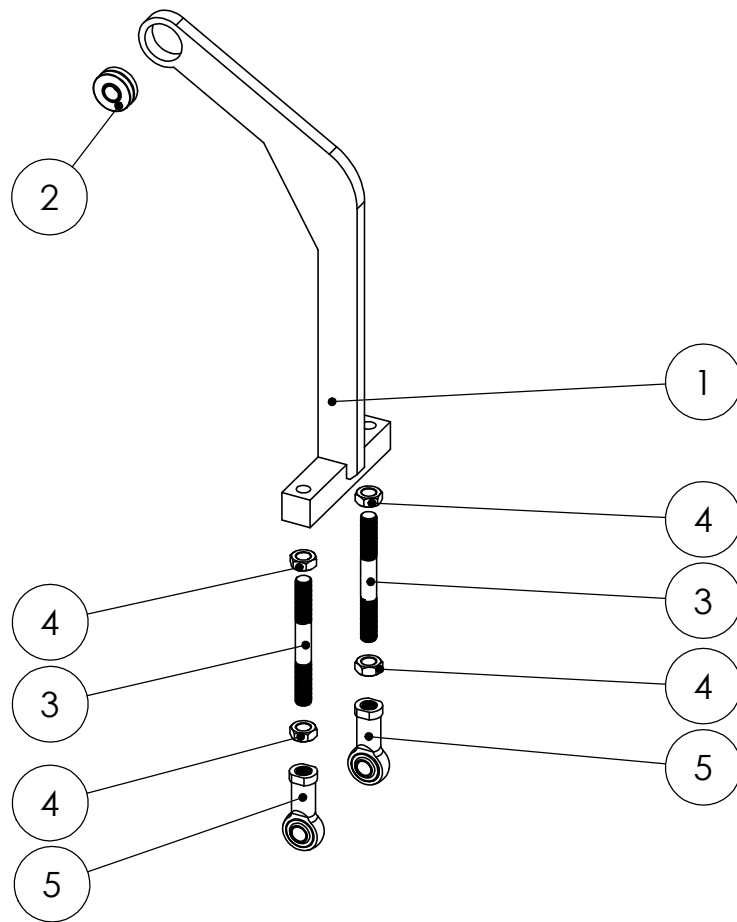
| | | | |
|--|--|------------------------------|-------------------------------|
| DO NOT SCALE DRAWING | | LIFT PLATE SUB ASSY | |
| UNLESS OTHERWISE SPECIFIED: DIMENSIONS ARE IN INCHES TOLERANCES: FRACTIONAL ±1/32 ANGULAR: MACH ±1° BEND ±1° TWO PLACE DECIMAL ±0.010 THREE PLACE DECIMAL ±0.005 | | DRAWING NO BWA00710 PARTS | REV 00 |
| MATERIAL: NOTED | | SCALE: 1:6 | WEIGHT: 33.933 # SHEET 1 OF 1 |



BARKER PRODUCTS
1310 MILLER ROAD
GREENVILLE, SC
29607

DRAWN BY: R WYMAN
DATE: 12/5/2018
MATERIAL: NOTED

| ITEM NO. | PART NUMBER | DESCRIPTION | QTY. |
|----------|-------------|---------------------|------|
| 1 | BW00790 | HOOK LINK | 1 |
| 2 | BW00970 | SPHERICAL BEARING | 1 |
| 3 | BW00850 | STUD 1/2-20 X 4 1/2 | 2 |
| 4 | XDB082000 | 1/2-20 HEX JAM NUT | 4 |
| 5 | BW00960 | SPHERICAL ROD IND | 2 |



BARKER PRODUCTS
 1310 MILLER ROAD
 GREENVILLE, SC
 29607

DRAWN BY: R WYMAN
 DATE: 12/5/2018
 MATERIAL: NOTED

DO NOT SCALE
 DRAWING
 UNLESS OTHERWISE SPECIFIED:
 DIMENSIONS ARE IN INCHES
 TOLERANCES:
 FRACTIONAL $\pm 1/32$
 ANGULAR: MACH $\pm 1^\circ$ BEND $\pm 1^\circ$
 TWO PLACE DECIMAL ± 0.010
 THREE PLACE DECIMAL ± 0.005

HOOK LINK SUB ASSY
 602

DRAWING NO
 BWA00790 PARTS

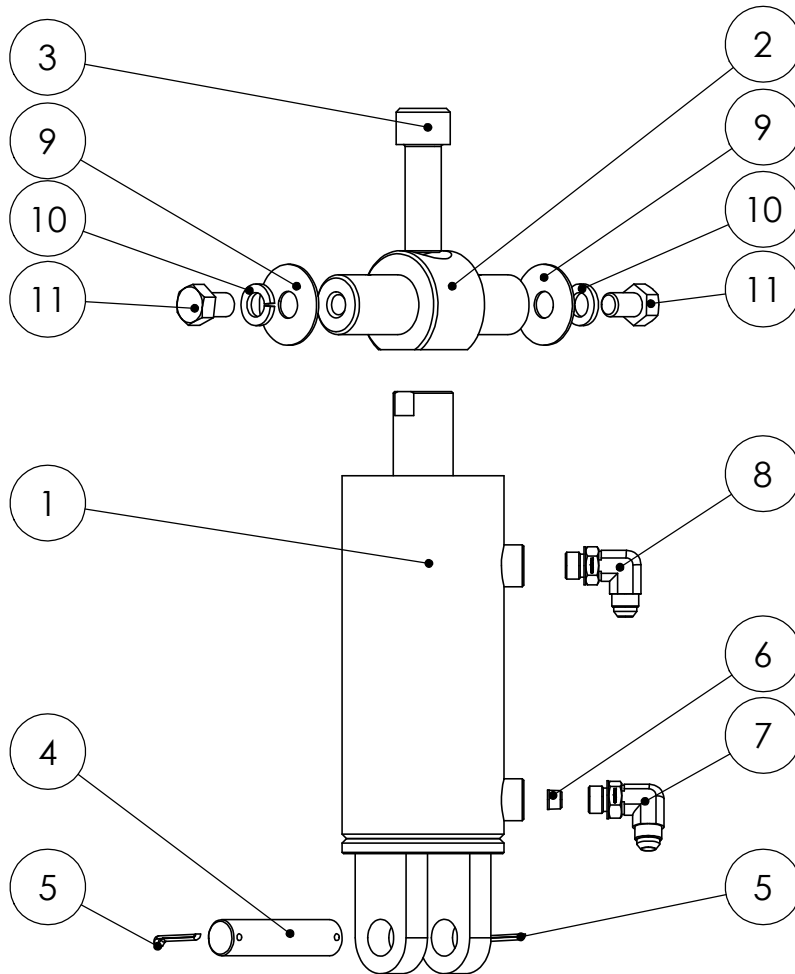
REV
 00

SCALE: 1:6

WEIGHT: 5.920 #

SHEET 1 OF 1

| ITEM NO. | PART NUMBER | DESCRIPTION | QTY. |
|----------|-------------|----------------------------|------|
| 1 | BW00870 | HYDRAULIC CYLINDER 3 X 4 | 1 |
| 2 | BW00865 | ROD TRUNNION | 1 |
| 3 | XAB121618 | 3/4-16 X 2 1/4 SHCS | 1 |
| 4 | BW00880 | CLINDER CLEVIS PIN | 1 |
| 5 | XXA081000 | 1/8 X 1 1/4 COTTER PIN | 2 |
| 6 | BV00020 | 116 X 1/8 NPT ORIFICE PLUG | 1 |
| 7 | BV00062 | ORIFICE ADAPTER | 1 |
| 8 | BR05210 | 6801-06-06 ADAPTER | 1 |
| 9 | BW07115 | BEARING CAP WASHER | 2 |
| 10 | XEB081000 | 1/2" LOCK WASHER | 2 |
| 11 | XAA081306 | 1/2-13 X 3/4 HHCS | 2 |



| | | | |
|--|-----------------|------------------------------|-------------------------------|
| DO NOT SCALE DRAWING | | CYLINDER SUB ASSY | |
| UNLESS OTHERWISE SPECIFIED: DIMENSIONS ARE IN INCHES TOLERANCES: FRACTIONAL ±1/32 ANGULAR: MACH ±1° BEND ±1° TWO PLACE DECIMAL ±0.010 THREE PLACE DECIMAL ±0.005 | | 602 | REV 00 |
| DRAWN BY: R WYMAN | | DRAWING NO BWA00870 PARTS | |
| DATE: 12/27/2018 | MATERIAL: NOTED | SCALE: 1:4 | WEIGHT: 17.204 # SHEET 1 OF 1 |



BARKER PRODUCTS
1310 MILLER ROAD
GREENVILLE, SC
29607