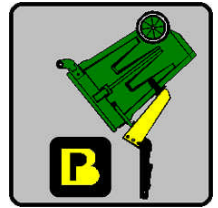




BP LIFTS

By Barker Products
1310 Miller Road, Greenville, SC 29607
Phone:800-349-3149—Fax:864-297-1292



Model BPC612 LIFT



- Meets ANSI Z245 Type B Specifications
- Powered By a 2 1/2" Bore Hydraulic EZ Bolt On Kit Standard
- Heavy Duty Cast Iron Bushings For Long Life Cycle
- Kickout Feature Protects Lifter From Ground Damage
- Modular Bolted Construction For Ease Of Part Replacement
- Non Adjustable Lower Hook Linkage



1310 Miller Road
Greenville, SC 29607

Barker Products

Lift

Unit Specialist



Phone: 864-288-7384
Fax: 707-371-4886

BPC-612N241 LIFT UNIT SPECIFICATIONS

1 MOUNTING BRACKET:

Unit will be bolted to mounting bracket for ease of repair or replacement. In the event of truck settling, unit height must be adjustable in 1" increments to 2" total.

2 CART LIFTING CAPABILITY:

ANSI Type B (American 2 bar cart)

3 Major Pivot Points:

All major pivot points are 1 1/4" diameter and equipped with heavy duty cast iron bushings and "Zerk" type grease fittings.

4 IMPACT RELEASE DEVICE:

The unit has a mechanical kickout feature that allows the unit to release from the vertical (down) position when struck by the street surface while the truck is in forward motion. When fully activated the vertical ground clearance is improved by five (5) inches. Unit must reset automatically to lift position.

5 LIFT BAR POCKET:

The lift bar pocket (saddle) is designed to minimize cart free movement when unit is in the up position. Bolted on for ease of replacement if damaged.

6 MOUNTING HEIGHT:

With the truck in "Level" position, the measurement from the top of the mounting plate to ground level will be 40 to 42 inches.

Note: User preferences vary, so mounting height should be approved by the end user.

7 DUMP ANGLE:

The lift plate when fully raised, will be at no less than 140 degrees inclusive.

8 LIFT PLATE (SHELL):

Constructed of 1/4" thick steel plate. Bolted on for ease of replacement if damaged. The lift plate will be painted safety yellow.

9 HOOK (LOWER BAR LATCH):

Mechanically operated by double non-adjustable steel linkage to securely hold the cart in place even if it is shaken at the top. Rotating style with replaceable bushings mounted on 3/4" diameter steel shaft. No sliding surfaces to wear out. Pivot points are bolted to the lift plate for ease of replacement if damaged.

10 CART LIFTING CAPACITY:

The unit will lift a minimum of 300 pounds at 1800 PSI hydraulic pressure.

12 PACKER BLADE INTERFERENCE:

When mounted properly, the unit can not be hit by the packer blade.

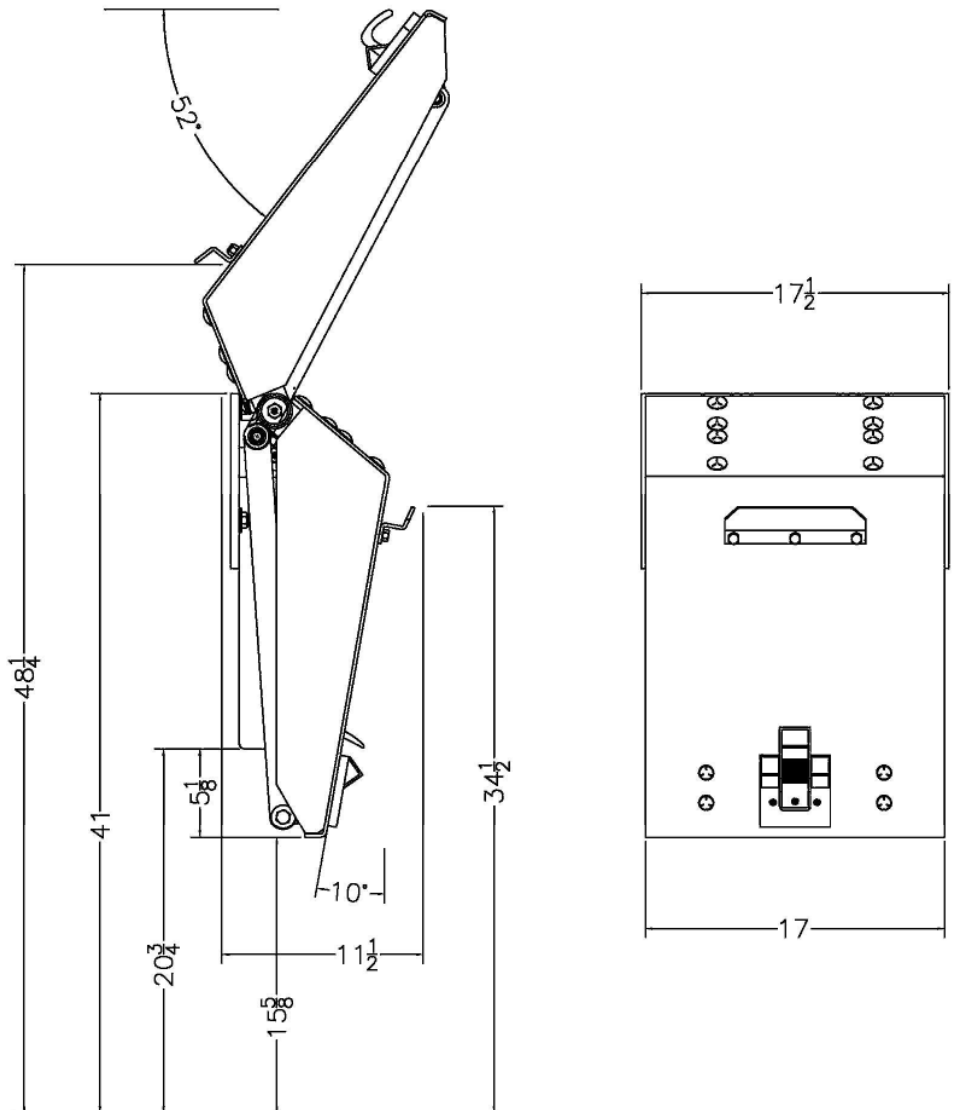


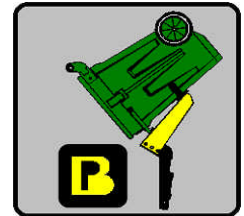
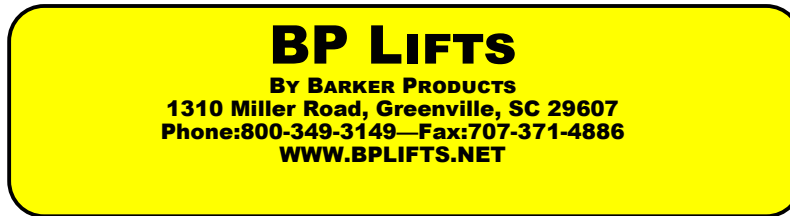
Barker Products
1310 Miller Road, Greenville, SC 29607



BPC-612N

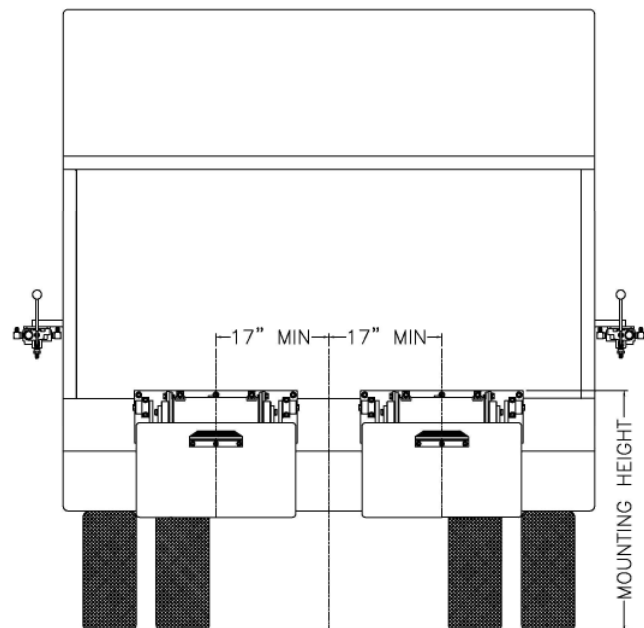
Envelope Dimensions





BPC-612N Lift Unit Installation

1. Truck must be empty, clean and parked on a level surface before installation is started.
2. Remove all bumpers and running boards that will interfere with the location of the lift units. Relocate lower mounted tail lights as needed.
3. Measure and mark the centerline of the truck hopper. The centerline of the unit or units should be a minimum of 17" from the hopper centerline.
4. Hand valves should be mounted on the side of the hopper at the most convenient height for the operator and clear of the packer controls.
5. The top of the unit mounting plate should be tack welded in place at the height recommended on the envelope dimension sheet of the unit.
CAUTION: SEE NOTE BELOW PICTURE
6. All dimensions should be approved by the customer before final welding.
7. If the mounting plate extends more than 2" above the hopper, a brace should be added.
8. Pressure must be set at 1200PSI minimum to 1400 maximum PSI.
9. Speed must be set to minimum 8 seconds total cycle time.

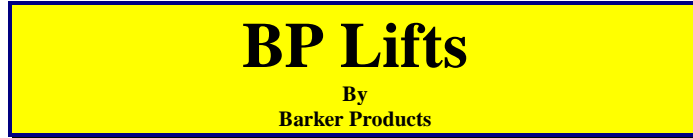


Mounting heights and locations are recommendations only. It is the responsibility of the installer to insure that the customer is satisfied with the height. Barker Products recommends that after the units are tacked in place, try the units with the can or cans the customer uses. The customer should approve your mount before final welding.



1310 Miller Road
Greenville, SC 29607

Lift



Unit Specialist



Phone:864-288-7384
Fax:864-297-1292

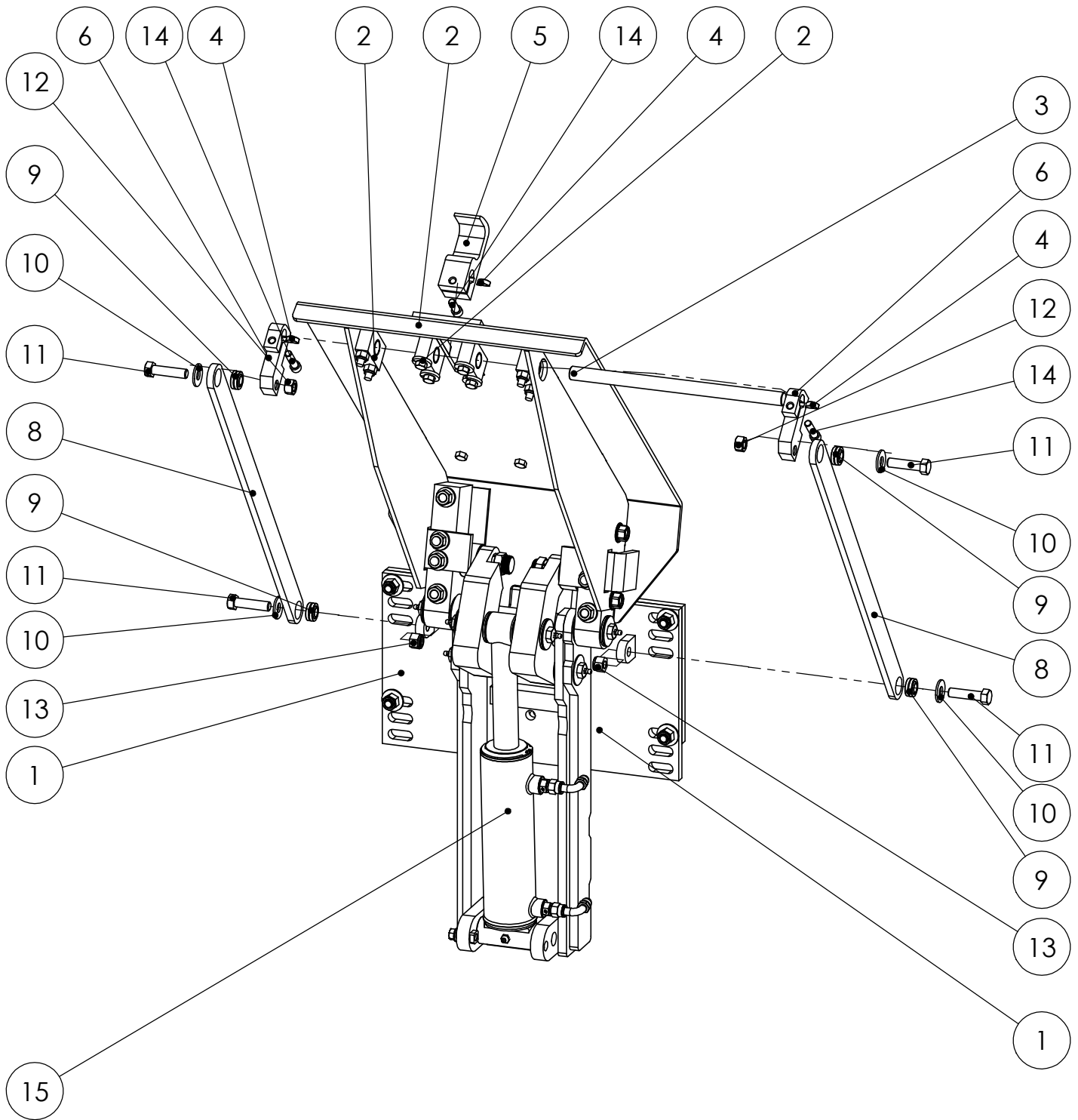
BU03941-BPC-612N241 LIFT UNIT WARRANTY

Barker Products warranties each new dump unit to be free of defects in material and workmanship under normal use and service for a period of 1 year or 2000 hours of operation, whichever comes first, from the date of delivery. Pressure must be set to 1200 to maximum 1400 PSI. Speed must be set to 8 seconds minimum complete cycle time.

This warranty excludes any obligations by BARKER PRODUCTS for the cost of down time. BARKER PRODUCTS will not warranty any dump unit which has been subject to misuse, neglect, alteration, or damaged by an accident.

On any work not performed by BARKER PRODUCTS or it's representative, the customer will be responsible for freight charges on all parts shipped under warranty. Parts will be invoiced at time of shipment. Defective parts must be returned to BARKER PRODUCTS within 30 days. If the part is determined to be defective the customer will be credited for the original invoice.

Customer warranty labor charges must be approved by BARKER PRODUCTS in advance. If not contacted for approval, BARKER PRODUCTS will not be liable for the warranty labor charge.



BARKER PRODUCTS
 1310 MILLER ROAD
 GREENVILLE, SC
 29607

DRAWN BY: R WYMAN
 DATE: 10/15/2018
 MATERIAL: NOTED

DO NOT SCALE
 DRAWING
 UNLESS OTHERWISE SPECIFIED:
 DIMENSIONS ARE IN INCHES
 TOLERANCES:
 FRACTIONAL $\pm 1/32$
 ANGULAR: MACH $\pm 1^\circ$ BEND $\pm 1^\circ$
 TWO PLACE DECIMAL ± 0.010
 THREE PLACE DECIMAL ± 0.005

BU03941
 612N241

DRAWING NO
 BU03941 PARTS

REV
 00

SCALE: 1:8 WEIGHT: 182.381 # SHEET 1 OF 2

| ITEM NO. | PART NUMBER | DESCRIPTION | EXPLODE/QTY. |
|----------|-------------|-------------------------|--------------|
| 1 | BWA17520 | MAINFRAME SUB ASSY | 1 |
| 2 | BWA17540 | LIFT PLATE SUB ASSY | 1 |
| 3 | BW17620 | HOOK SHAFT | 1 |
| 4 | BW07560 | WOODRUFF KEY #806 | 3 |
| 5 | BW07490 | HOOK | 1 |
| 6 | BW06780 | HOOK DRIVE | 2 |
| 7 | XAE061606 | 3/8-16 X 1 FLANGED HHCS | 2 |
| 8 | BW03440 | HOOK LINK | 2 |
| 9 | BW99108 | 1/2" SPHERICAL BEARING | 4 |
| 10 | XEA081000 | 1/2" FLAT WASHER | 4 |
| 11 | XAA081316 | 1/2-13 X 2 HHCS | 4 |
| 12 | XDA081300 | 1/2-13 HEX NUT | 2 |
| 13 | XDA081300 | 1/2-13 HEX NUT | 2 |
| 14 | XAB061612 | 3/8-16 X 1 1/2 SHCS | 3 |
| 15 | BWA17450 | CYLINDER SUB ASSY | 1 |



BARKER PRODUCTS
1310 MILLER ROAD
GREENVILLE, SC
29607

DRAWN BY: R WYMAN
DATE: 10/15/2018
MATERIAL: NOTED

DO NOT SCALE
DRAWING
UNLESS OTHERWISE SPECIFIED:
DIMENSIONS ARE IN INCHES
TOLERANCES:
FRACTIONAL ±1/32
ANGULAR: MACH ±1° BEND ±1°
TWO PLACE DECIMAL ±0.010
THREE PLACE DECIMAL ±0.005

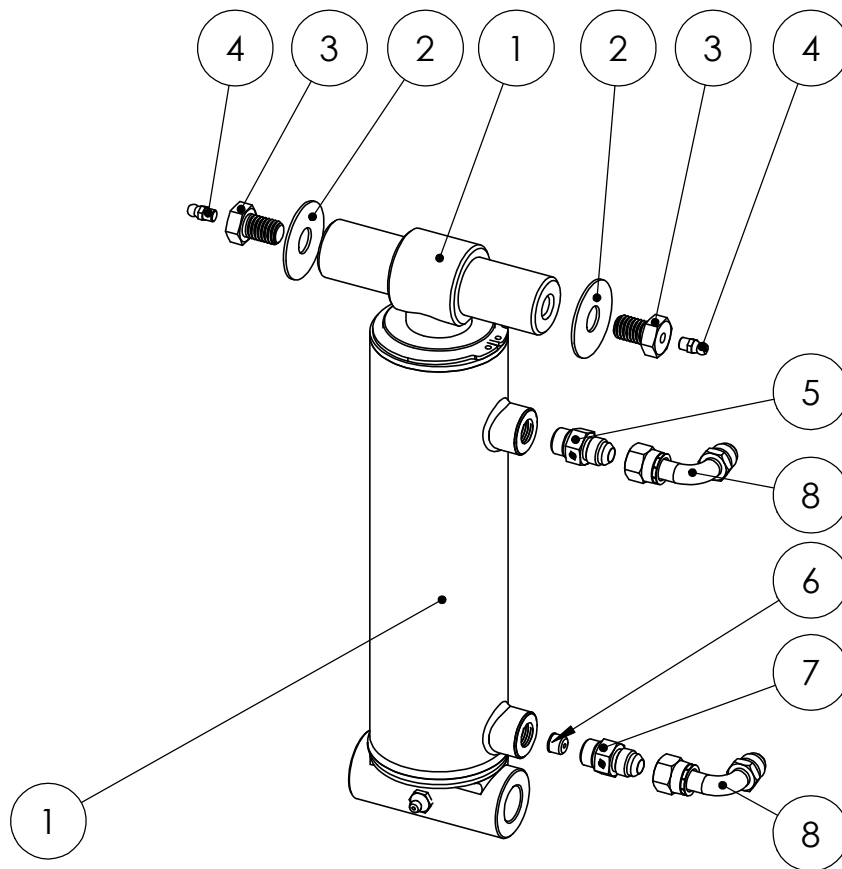
BU03941
612N241

DRAWING NO
BU03941 PARTS

REV
00

SCALE: 1:8 WEIGHT: 182.381 # SHEET 2 OF 2

| ITEM NO. | PART NUMBER | DESCRIPTION | EXPLODED VIEW/QTY. |
|----------|-------------|-------------------------------|--------------------|
| 1 | BW17450 | CYLINDER 2 1/2 X 6 | 1 |
| 2 | BW07115 | BEARING CAP WASHER | 2 |
| 3 | BW07110 | BEARING CAP BOLT | 2 |
| 4 | BW01110 | GREASE FITTING - 1/4-28 SHORT | 2 |
| 5 | BR03830 | 6400-06-06 M TUBE O-RING | 1 |
| 6 | BV00020 | 093 X 1/8 NPT ORIFICE PLUG | 1 |
| 7 | BV00064 | 6T X 6S ORIFICE FITTING | 1 |
| 8 | BR05106 | 6701-06-06 M37 X FS37 | 2 |



BARKER PRODUCTS
 1310 MILLER ROAD
 GREENVILLE, SC
 29607

DRAWN BY: R WYMAN
 DATE: 1/8/2019
 MATERIAL: NOTED

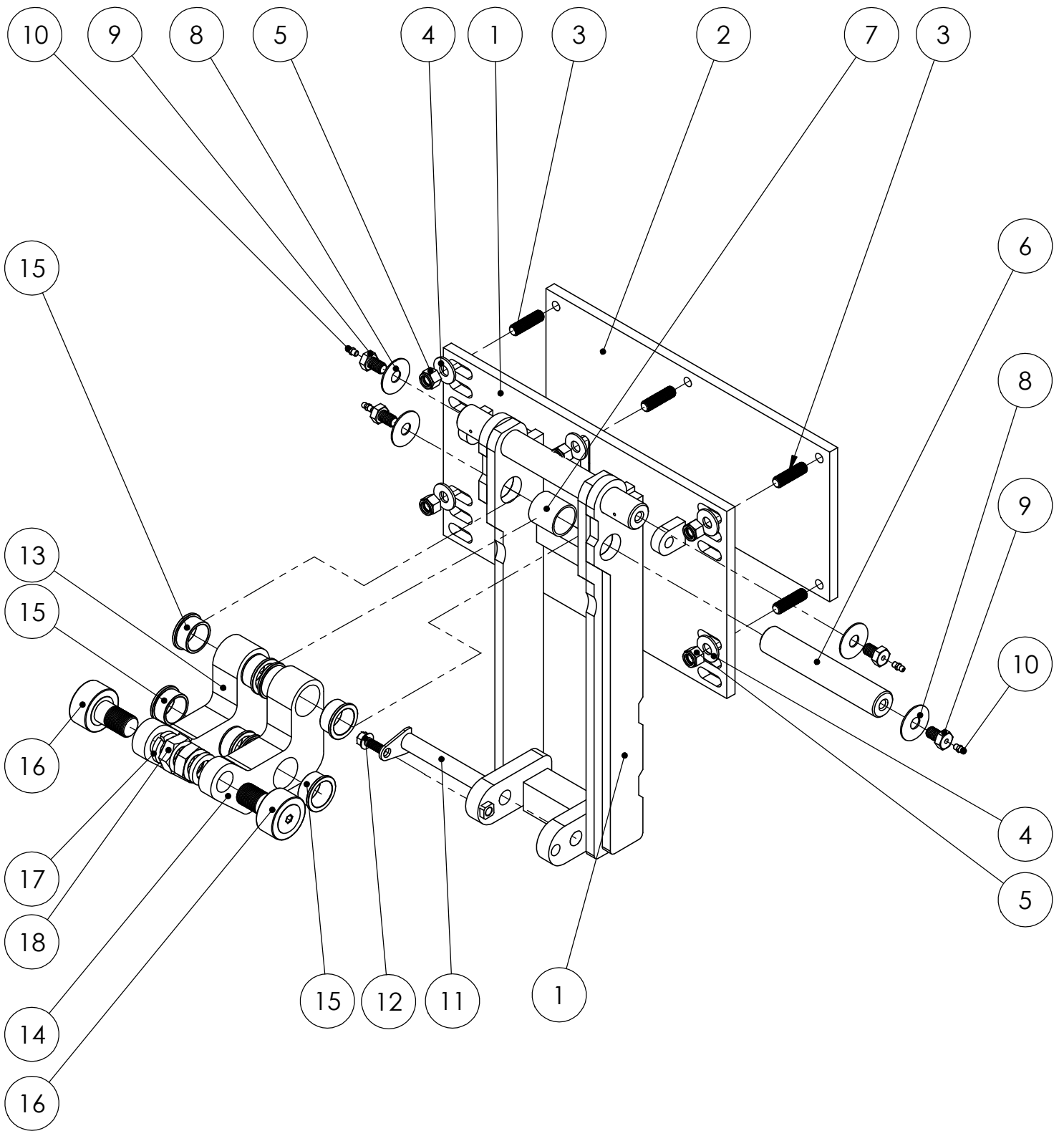
DO NOT SCALE
 DRAWING
 UNLESS OTHERWISE SPECIFIED:
 DIMENSIONS ARE IN INCHES
 TOLERANCES:
 FRACTIONAL ±1/32
 ANGULAR: MACH ±1° BEND ±1°
 TWO PLACE DECIMAL ±0.010
 THREE PLACE DECIMAL ±0.005

CYLINDER SUB ASSY
 612 N - 2 1/2 BORE

DRAWING NO
 BWA17450 PARTS

REV
 00

SCALE: 1:4 WEIGHT: 12.213 # SHEET 1 OF 1



| | | | |
|---|------------------|---------------------------------|-----------|
| DO NOT SCALE DRAWING | | MAINFRAME SUB ASSY PARTS 612 | |
| UNLESS OTHERWISE SPECIFIED: DIMENSIONS ARE IN INCHES TOLERANCES: FRACTIONAL $\pm 1/32$ ANGULAR: MACH $\pm 1^\circ$ BEND $\pm 1^\circ$ TWO PLACE DECIMAL ± 0.010 THREE PLACE DECIMAL ± 0.005 | | DRAWING NO BWA17520 PARTS | REV 00 |
| SCALE: 1:6 | WEIGHT: 98.968 # | SHEET 1 OF 2 | |



BARKER PRODUCTS
1310 MILLER ROAD
GREENVILLE, SC
29607

DRAWN BY: R WYMAN
DATE: 9/21/2017
MATERIAL: NOTED

| ITEM NO. | PART NUMBER | DESCRIPTION | EXPLODED/QTY. |
|----------|-------------|-------------------------------|---------------|
| 1 | BW17520 | MAINFRAME | 1 |
| 2 | BW17525 | MOUNT PLATE - N | 1 |
| 3 | BW07140 | PLATE STUD | 5 |
| 4 | XEA081000 | 1/2" FLAT WASHER | 5 |
| 5 | XDC081300 | 1/2-20 NYLOK NUT | 5 |
| 6 | BW17600 | LIFT LINK SHAFT | 1 |
| 7 | BW00770 | LIFT LINK SPACER | 1 |
| 8 | BW07115 | BEARING CAP WASHER | 4 |
| 9 | BW07110 | BEARING CAP BOLT | 4 |
| 10 | BW01110 | GREASE FITTING - 1/4-28 SHORT | 4 |
| 11 | BW03050 | CYLINDER MOUNT PIN | 1 |
| 12 | XAE061608 | 3/8-16 X 1 FLANGED HHCS | 1 |
| 13 | BW17550 | LEFT LIFT LINK | 1 |
| 14 | BW17560 | RIGHT LIFT LINK | 1 |
| 15 | BW00934 | CAST FLANGE BUSHING | 8 |
| 16 | BW99030 | 1 7/8 CAM FOLLOWER | 2 |
| 17 | XEB161000 | 1" LOCKWASHER | 2 |
| 18 | XDB161400 | 1"-14 HEX JAM NUT | 2 |



BARKER PRODUCTS
1310 MILLER ROAD
GREENVILLE, SC
29607

DRAWN BY: R WYMAN

DATE: 9/21/2017

MATERIAL: NOTED

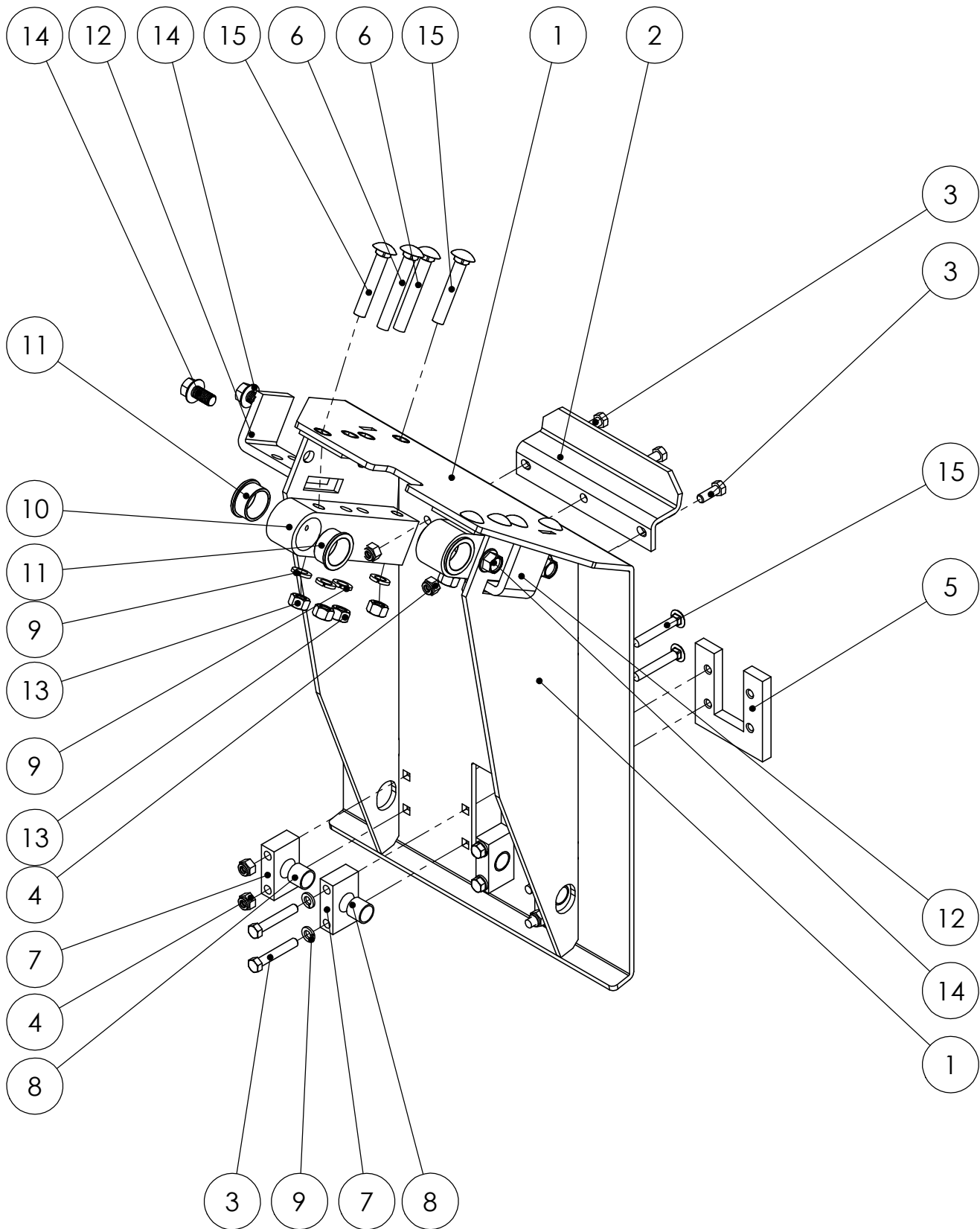
DO NOT SCALE
DRAWING
UNLESS OTHERWISE SPECIFIED:
DIMENSIONS ARE IN INCHES
TOLERANCES:
FRACTIONAL ±1/32
ANGULAR: MACH ±1° BEND ±1°
TWO PLACE DECIMAL ±0.010
THREE PLACE DECIMAL ±0.005

MAINFRAME SUB ASSY PARTS
612

DRAWING NO
BWA17520 PARTS

REV
00

SCALE: 1:1 WEIGHT: 98.968 # SHEET 2 OF 2



| | | | |
|---|------------------|----------------------------------|-----------|
| DO NOT SCALE DRAWING | | LIFT PLATE SUB ASSY PARTS 612 | |
| UNLESS OTHERWISE SPECIFIED: DIMENSIONS ARE IN INCHES TOLERANCES: FRACTIONAL $\pm 1/32$ ANGULAR: MACH $\pm 1^\circ$ BEND $\pm 1^\circ$ TWO PLACE DECIMAL ± 0.010 THREE PLACE DECIMAL ± 0.005 | | DRAWING NO BWA17540 PARTS | REV 00 |
| SCALE: 1:6 | WEIGHT: 68.362 # | SHEET 1 OF 2 | |



BARKER PRODUCTS
1310 MILLER ROAD
GREENVILLE, SC
29607

DRAWN BY: R WYMAN
DATE: 9/25/2017
MATERIAL: NOTED

| ITEM NO. | PART NUMBER | DESCRIPTION | EXPLODED/QTY. |
|----------|-------------|------------------------------|---------------|
| 1 | BW17540 | LIFT PLATE | 1 |
| 2 | BW00800 | SADDLE | 1 |
| 3 | XAA061618 | 3/8-16 X 2 1/4 HHCS | 7 |
| 4 | XDC061600 | 3/8-16 NYLOK NUT | 7 |
| 5 | BZ03451 | SUPPORT PLATE | 1 |
| 6 | XAH081328 | 1/2-13 X 3 1/2 CARRIAGE BOLT | 4 |
| 7 | BW17130 | HOOK BEARING MOUNT | 4 |
| 8 | BW03195 | 12-DU-12 BEARING | 4 |
| 9 | XEB081000 | 1/2 LOCKWASHER | 12 |
| 10 | BW17570 | TRACK BAR | 2 |
| 11 | BW00934 | CAST FLANGE BUSHING | 4 |
| 12 | BW17595 | TRACK CAP | 2 |
| 13 | XDA081300 | 1/2-13 HEX NUT | 8 |
| 14 | XAE081308 | 3/8-16 X 1 FLANGED HHCS | 4 |
| 15 | XAH081324 | 1/2-13 X 3 CARRIAGE BOLT | 8 |



BARKER PRODUCTS
1310 MILLER ROAD
GREENVILLE, SC
29607

DRAWN BY: R WYMAN
DATE: 9/25/2017
MATERIAL: NOTED

DO NOT SCALE
DRAWING
UNLESS OTHERWISE SPECIFIED:
DIMENSIONS ARE IN INCHES
TOLERANCES:
FRACTIONAL ±1/32
ANGULAR: MACH ±1° BEND ±1°
TWO PLACE DECIMAL ±0.010
THREE PLACE DECIMAL ±0.005

LIFT PLATE SUB ASSY PARTS
612
DRAWING NO
BWA17540 PARTS
SCALE: 1:1 WEIGHT: 68.362 # SHEET 2 OF 2
REV
00