



BP Lifts

By Barker Products
1310 Miller Road, Greenville, SC 29607



Model HB15-45 Lifts

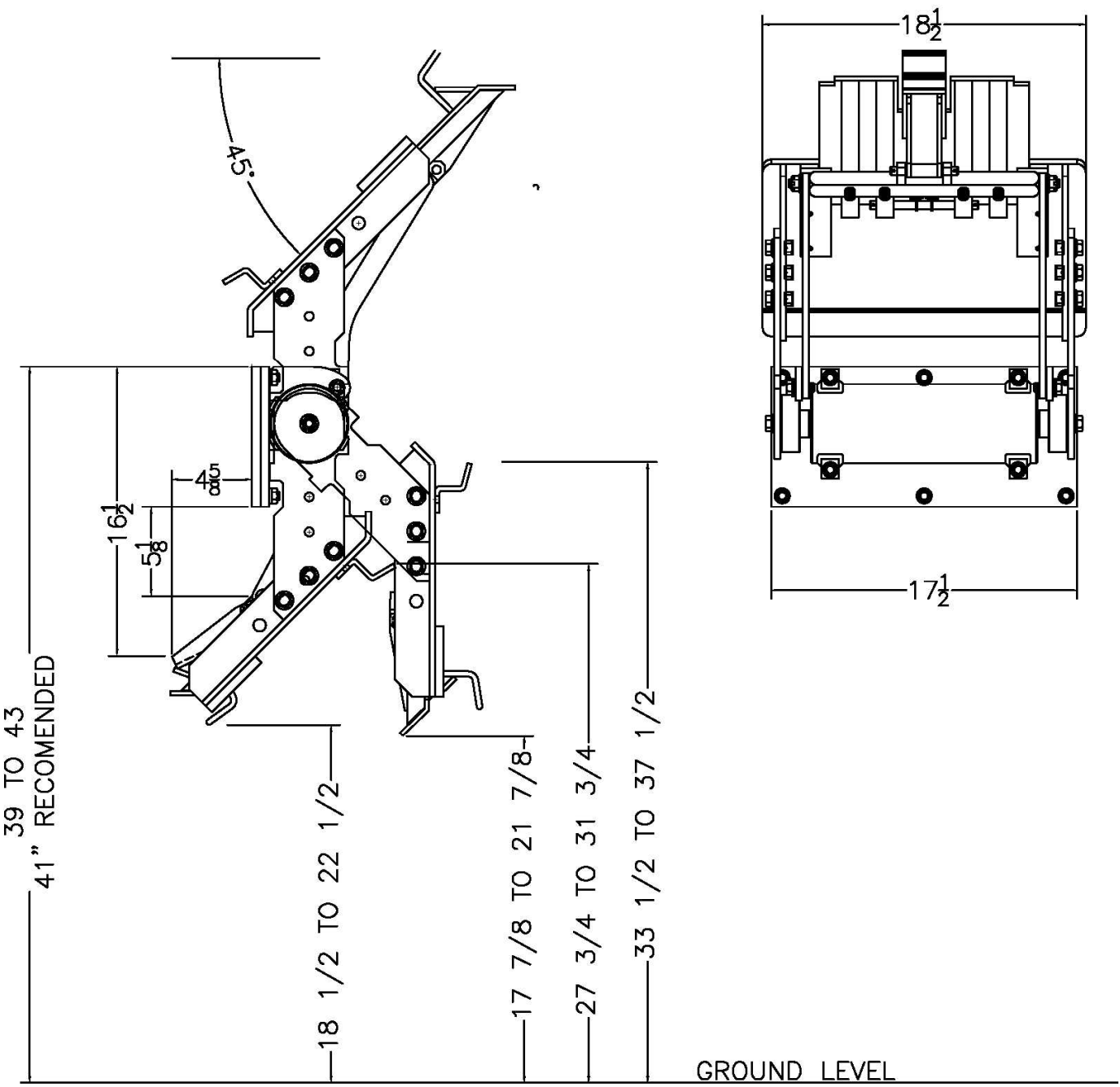


- 4 Models Available
- Dependable Smooth Acting 15K Helical Rotary Actuator
- Splined Shafts To Eliminate Arm Movement And Wear
- 45 Degree Dump Angle
- EZ Bolt On Kit Standard
- Meets ANSI Z245 Type B Specs
- Lifts All Standard American 2 Bar Carts
- Liftplate Arc Motion Makes Cart Attachment Fast And Easy On Unlevel Highway Conditions
- Double Wide Mounting Plate Available. Increases Hopper Height To Decrease Packing Cycles
- 37 to 47 Inch Mounting Heights
- 18 1/2 to 22 1/2 Inch Ground Clearance
- Use on Rear Loaders
- All Components Manufactured and Assembled In The US



HB15N-4541

Envelope Dimensions





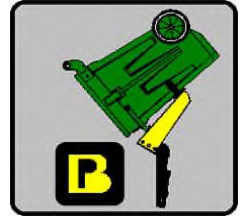
BP LIFTS

BY BARKER PRODUCTS

1310 Miller Road, Greenville, SC 29607

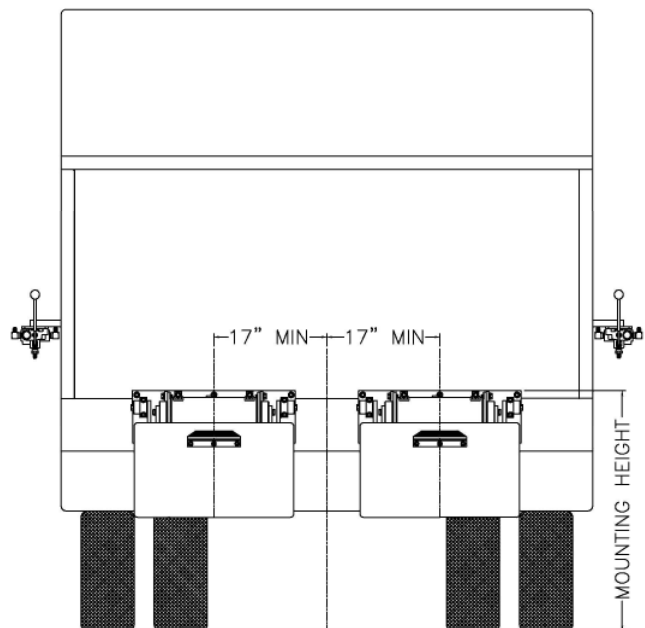
Phone: 800-349-3149—Fax: 707-371-4886

WWW.BPLIFTS.NET



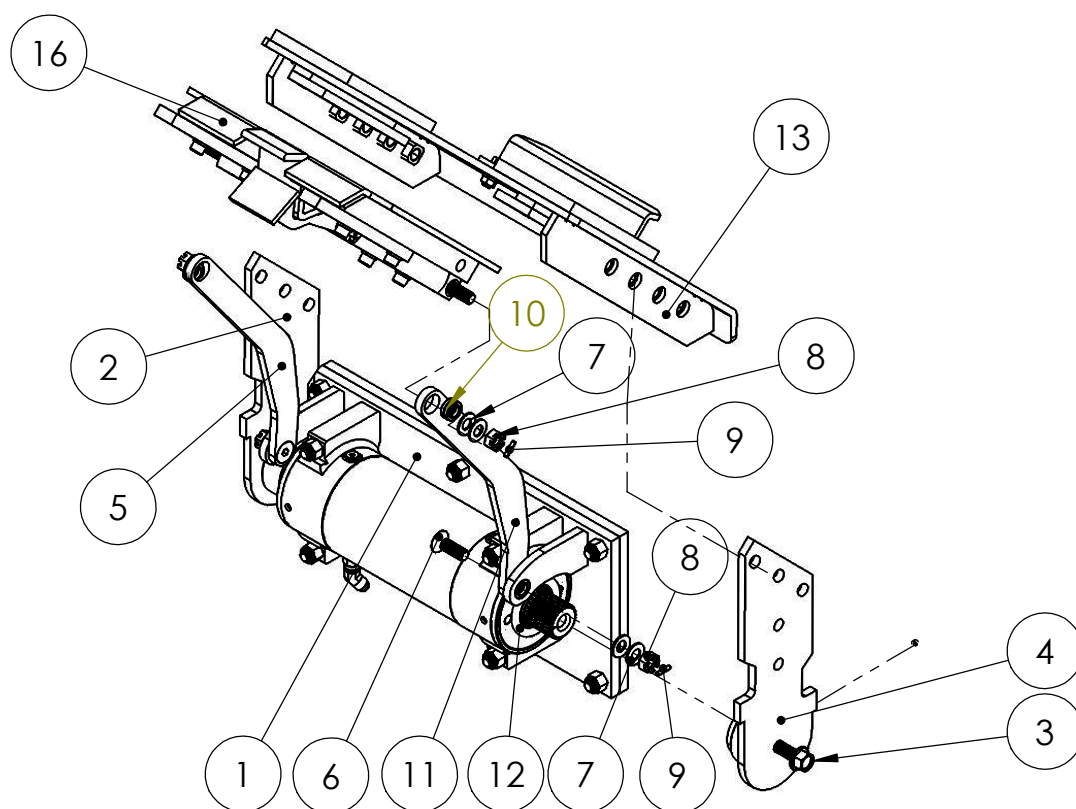
Lift Unit Installation

1. Truck must be empty, clean and parked on a level surface before installation is started.
2. Remove all bumpers and running boards that will interfere with the location of the lift units. Relocate lower mounted tail lights as needed.
3. Measure and mark the centerline of the truck hopper. The centerline of the unit or units should be a minimum of 17" from the hopper centerline.
4. Hand valves should be mounted on the side of the hopper at the most convenient height for the operator and clear of the packer controls.
5. The top of the unit mounting plate should be tack welded in place at the height recommended on the envelope dimension sheet of the unit.
CAUTION: SEE NOTE BELOW PICTURE
6. All dimensions should be approved by the customer before final welding.
7. If the mounting plate extends more than 2" above the hopper, a brace should be added.



Mounting heights and locations are recommendations only. It is the responsibility of the installer to insure that the customer is satisfied with the height. Barker Products recommends that after the units are tacked in place, try the units with the can or cans the customer uses. The customer should approve your mount before final welding.

ITEM NO.	PART NUMBER	DESCRIPTION	EXPLODE UP VIEW/QTY.
1	BWA10620	MAINFRAME SUB ASSY	1
2	BW10640	LEFT LIFT ARM	1
3	XAE081312	1/2-13 X 1 1/2 FLANGED HHCS	2
4	BW10650	RIGHT LIFT ARM	1
5	BW10641	LEFT SLIDE LINK	1
6	BW02145	LOCK BOLT FSHCS	2
7	BW02100	1/2" BELLEVILLE SPRING WASHER	8
8	XDE081300	1/2-13 SLOTTED NUT	4
9	BW02125	5/32 X 3/4 SPRING PIN	4
10	BW99308	1/2" SPHERICAL BEARING	2
11	BW10651	RIGHT SLIDE LINK	1
12	BW07001	O-RING GREASE SEAL	2
13	BWA10630	LIFT PLATE SUB ASSY	1
16	BW10000	SLIDE PLATE SUB ASSY	1



BARKER PRODUCTS
1310 MILLER ROAD
GREENVILLE, SC
29607

DRAWN BY: R WYMAN
DATE: 12/14/2018
MATERIAL: NOTED

DO NOT SCALE
DRAWING
UNLESS OTHERWISE SPECIFIED:
DIMENSIONS ARE IN INCHES
TOLERANCES:
FRACTIONAL $\pm 1/32$
ANGULAR: MACH $\pm 1^\circ$ BEND $\pm 1^\circ$
TWO PLACE DECIMAL ± 0.010
THREE PLACE DECIMAL ± 0.005

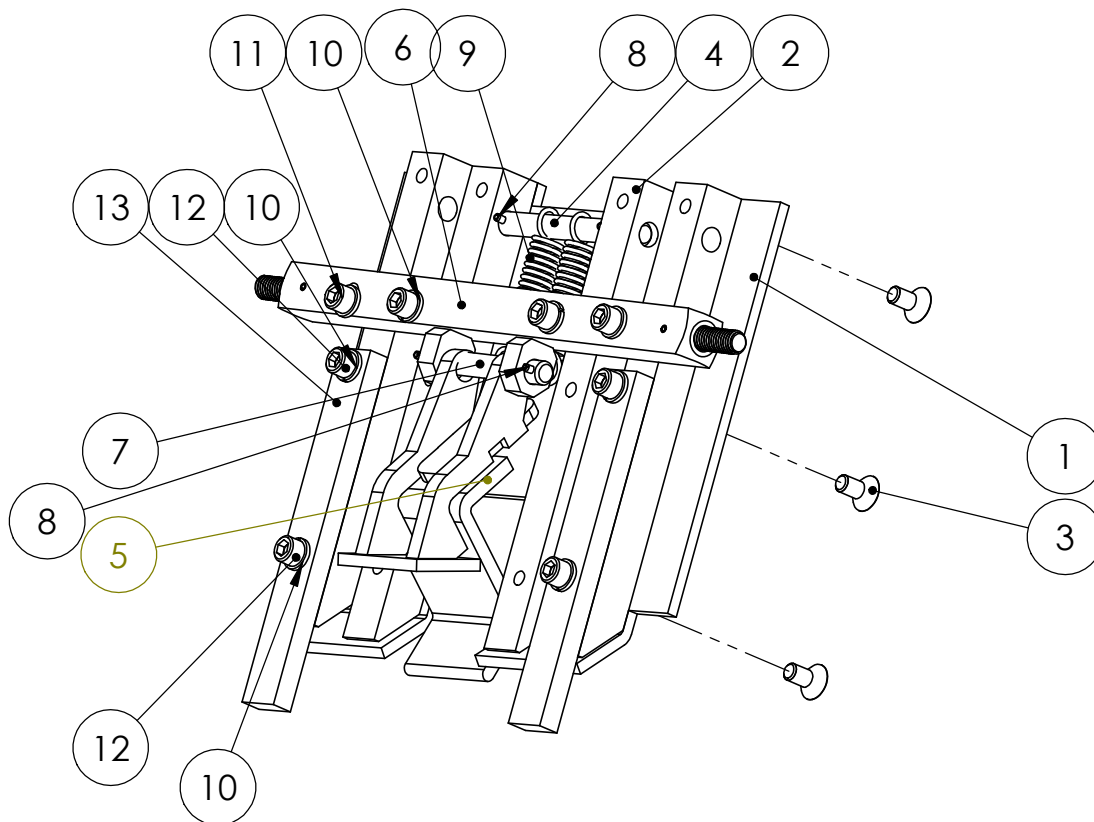
HB15N2-4541 LIFT UNIT PARTS

DRAWING NO
BU07241 PARTS

REV
00

SCALE: 1:8 WEIGHT: 166.497 # SHEET 1 OF 1

ITEM NO.	PART NUMBER	DESCRIPTION	EXPLODE VIEW/QTY.
1	BW10230	SLIDE PLATE	1
2	BW10240	SLIDE SUPPORT	4
3	XAD061606	3/8-16 X 3/4 FHSCS	12
4	BW10110	SPRING SHAFT	1
5	BW10680	HOOK	1
6	BW10060	SLIDE DRIVE	1
7	BW10100	HOOK SHAFT	1
8	BW02125	5/32 X 3/4 SPRING PIN	4
9	BW10120	HOOK SPRING	2
10	XEB061000	3/8" LOCK WASHER	8
11	XAB061612	3/8-16 X 1 1/2 SHCS	4
12	XAB061608	3/8-16 X 1 SHCS	4
13	BW10690	SLIDE EXTENSION	2



BARKER PRODUCTS
1310 MILLER ROAD
GREENVILLE, SC
29607

DRAWN BY: R WYMAN
DATE: 1/10/2019
MATERIAL: NOTED

DO NOT SCALE
DRAWING
UNLESS OTHERWISE SPECIFIED:
DIMENSIONS ARE IN INCHES
TOLERANCES:
FRACTIONAL $\pm 1/32$
ANGULAR: MACH $\pm 1^\circ$ BEND $\pm 1^\circ$
TWO PLACE DECIMAL ± 0.010
THREE PLACE DECIMAL ± 0.005

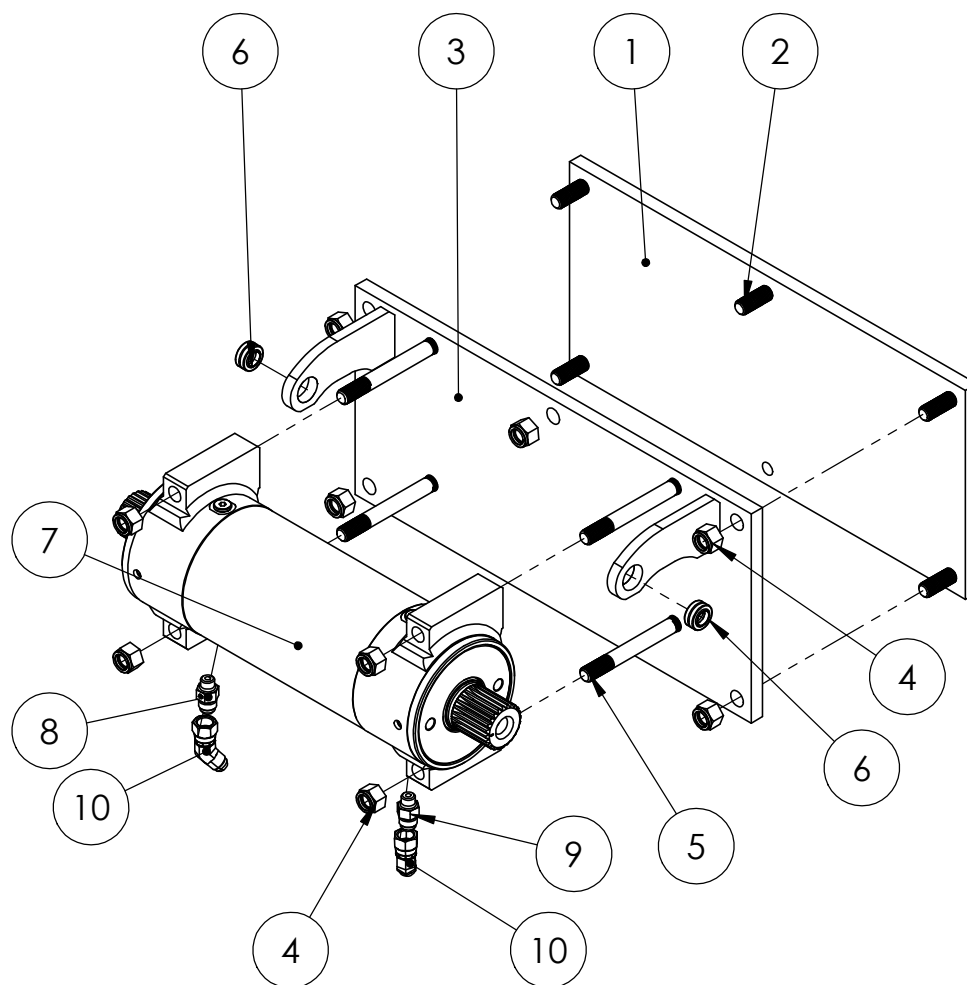
SLIDE PARTS
15K UNITS

DRAWING NO
BW10000

REV
00

SCALE: 1:4 WEIGHT: 21.737 # SHEET 1 OF 1

ITEM NO.	PART NUMBER	DESCRIPTION	EXPLODE/QTY.
1	BW17525	MOUNT PLATE - N	1
2	BW07140	PLATE STUD	5
3	BW10620	MAINFRAME	1
4	XDC082000	1/2-20 NYLOK NUT	9
5	BW07125	ACTUATOR MOUNT STUD	4
6	BW99308	1/2" SPHERICAL BEARING	2
7	BW07000	15K ACTUATOR	1
8	BV00053	093 X 6T4S ORIFICE FITTING	1
9	BR03825	6400-06-04 M TUBE X M ORING	1
10	BR04842	6502-06-06 MJ-FJS 45 DEG	2



BARKER PRODUCTS
1310 MILLER ROAD
GREENVILLE, SC
29607

DRAWN BY: R WYMAN
DATE: 7/5/2017
MATERIAL: NOTED

DO NOT SCALE
DRAWING
UNLESS OTHERWISE SPECIFIED:
DIMENSIONS ARE IN INCHES
TOLERANCES:
FRACTIONAL $\pm 1/32$
ANGULAR: MACH $\pm 1^\circ$ BEND $\pm 1^\circ$
TWO PLACE DECIMAL ± 0.010
THREE PLACE DECIMAL ± 0.005

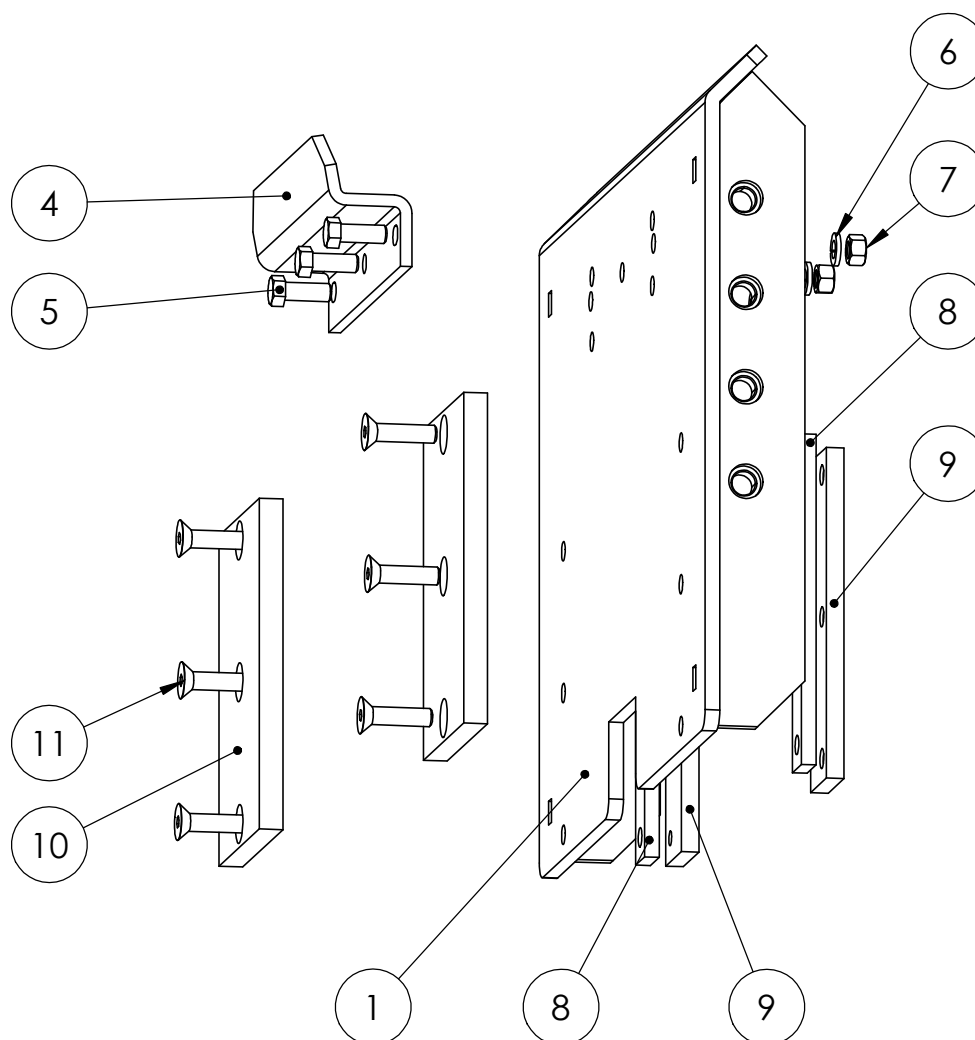
MAINFRAME SUB ASSY
HB15-45 UNITS

DRAWING NO
BWA10620

REV
00

SCALE: 1:6 WEIGHT: 59.783 # SHEET 1 OF 1

ITEM NO.	PART NUMBER	DESCRIPTION	EXPLODE VIEW/QTY.
1	BW10630	LIFT PLATE	1
4	BW00800	SADDLE	1
5	XAA061608	3/8-16 X 1 HHCS	3
6	XEB061000	3/8 LOCKWASHER	3
7	XDA061600	3/8-16 HEX NUT	3
8	BW07330	SLIDE SPACER	2
9	BW07320	SLIDE CAP	2
10	BW10675	CAN SUPPORT	2
11	XAD061612	3/8-16 X 1 1/2 FSHCS	6



BARKER PRODUCTS
1310 MILLER ROAD
GREENVILLE, SC
29607

DRAWN BY: R WYMAN
DATE: 7/4/2017
MATERIAL: NOTED

DO NOT SCALE
DRAWING
UNLESS OTHERWISE SPECIFIED:
DIMENSIONS ARE IN INCHES
TOLERANCES:
FRACTIONAL $\pm 1/32$
ANGULAR: MACH $\pm 1^\circ$ BEND $\pm 1^\circ$
TWO PLACE DECIMAL ± 0.010
THREE PLACE DECIMAL ± 0.005

LIFT PLATE SUB ASSY
HB15-45

DRAWING NO
BWA10630

REV
01

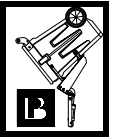
SCALE: 1:4 WEIGHT: 35.559 # SHEET 1 OF 1



1310 Miller Road
Greenville, SC 296078

Barker Products

Lift Unit Specialist



Phone:864-288-7384
Fax:864-297-1292

BPH SERIES LIFT UNIT WARRANTY

Barker Products warranties each new dump unit to be free of defects in material and workmanship under normal use and service for a period of 1 year or 2000 hours of operation, whichever comes first, from the date of delivery.

This warranty excludes any obligations by BARKER PRODUCTS for the cost of down time. BARKER PRODUCTS will not warranty any dump unit which has been subject to misuse, neglect, alteration, or damaged by an accident.

On any work not performed by BARKER PRODUCTS or it's representative, the customer will be responsible for freight charges on all parts shipped under warranty. Parts will be invoiced at time of shipment. Defective parts must be returned to BARKER PRODUCTS within 30 days. If the part is determined to be defective the customer will be credited for the original invoice.

Customer warranty labor charges must be approved by BARKER PRODUCTS in advance. If not contacted for approval, BARKER PRODUCTS will not be liable for the warranty labor charge.