



BP Lifts
By Barker Products
1310 Miller Road, Greenville, SC 29607



- **4 Models Available**
- **Dependable Smooth Acting 15K Helical Rotary Actuator**
- **Splined Shafts To Eliminate Arm Movement And Wear**
- **45 Degree Dump Angle**
- **EZ Bolt On Kit Standard**
- **Meets ANSI Z245 Type B Specs** **Lifts All Standard American 2 Bar Carts**
- **Liftplate Arc Motion Makes Cart Attachment Fast And Easy On Unlevel Highway Conditions**
- **Double Wide Mounting Plate Available. Increases Hopper Height To Decrease Packing Cycles**
- **37 to 47 Inch Mounting Heights**
- **18 1/2 to 22 1/2 Inch Ground Clearance**
- **Use on Rear Loaders**
- **All Components Manufactured and Assembled In The US**

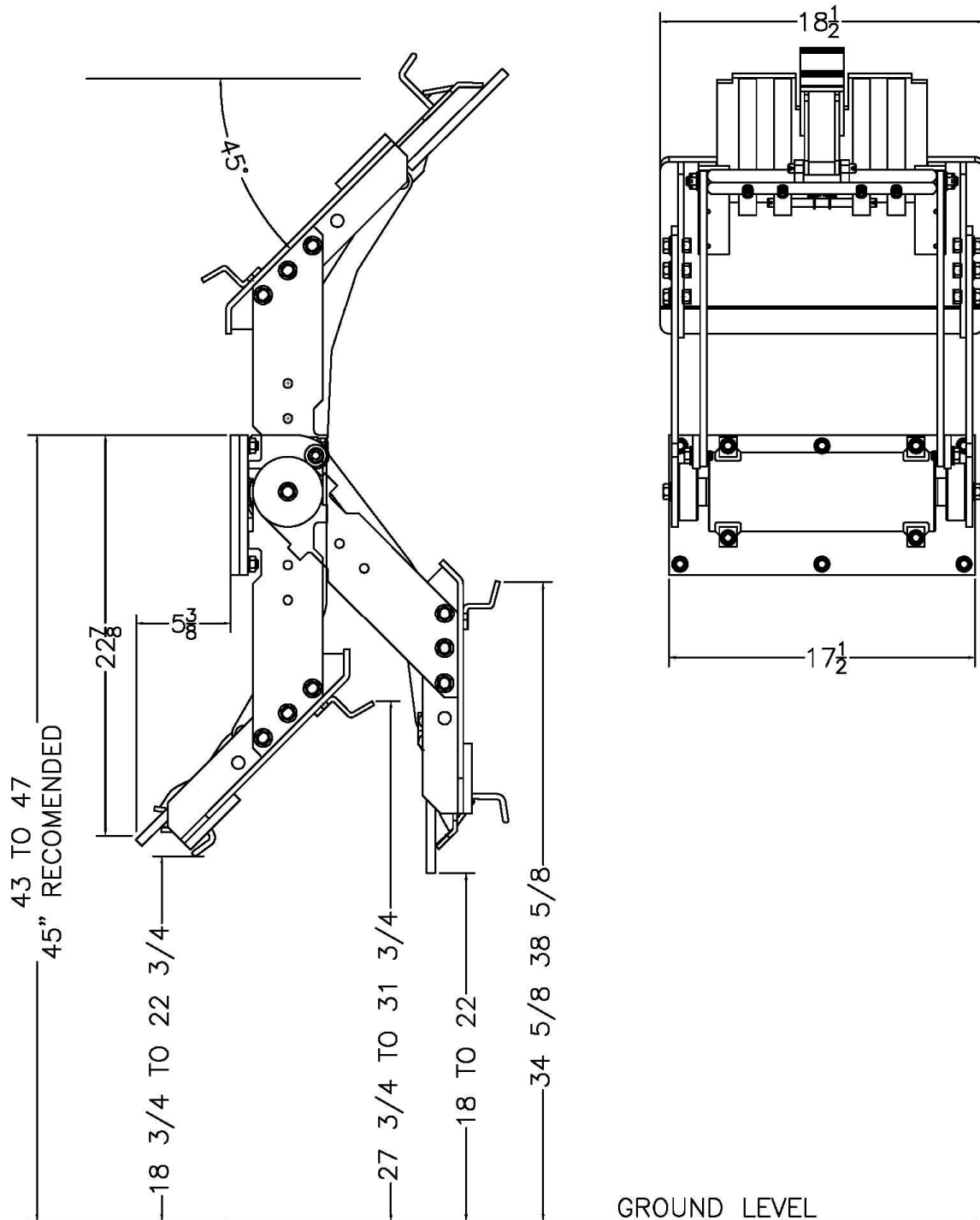


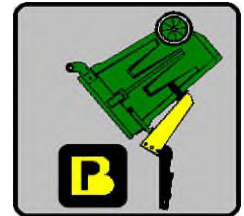
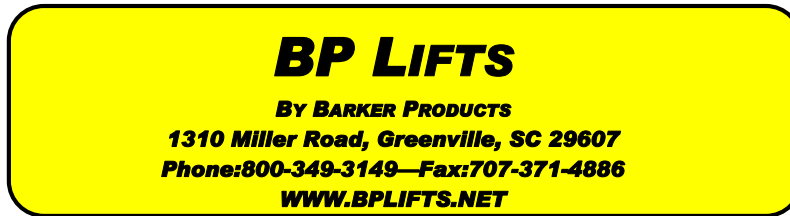
BP Lifts
By Barker Products
1310 Miller Road, Greenville, SC 29607



HB15N-4545

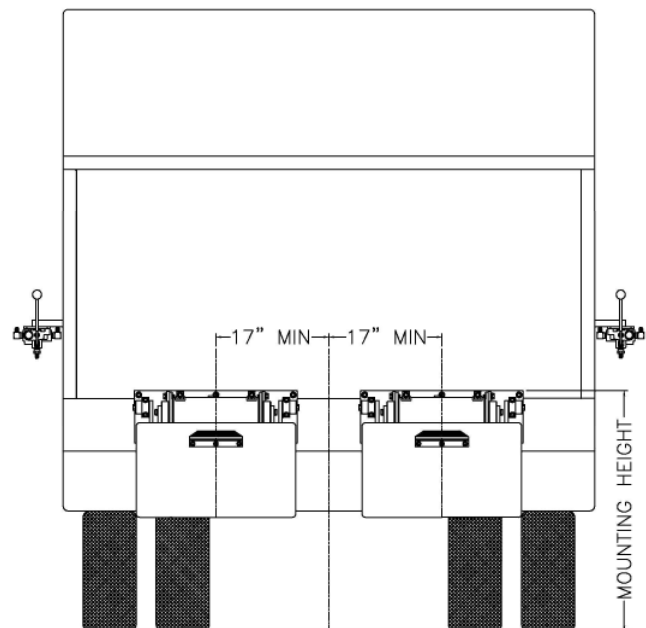
Envelope Dimensions





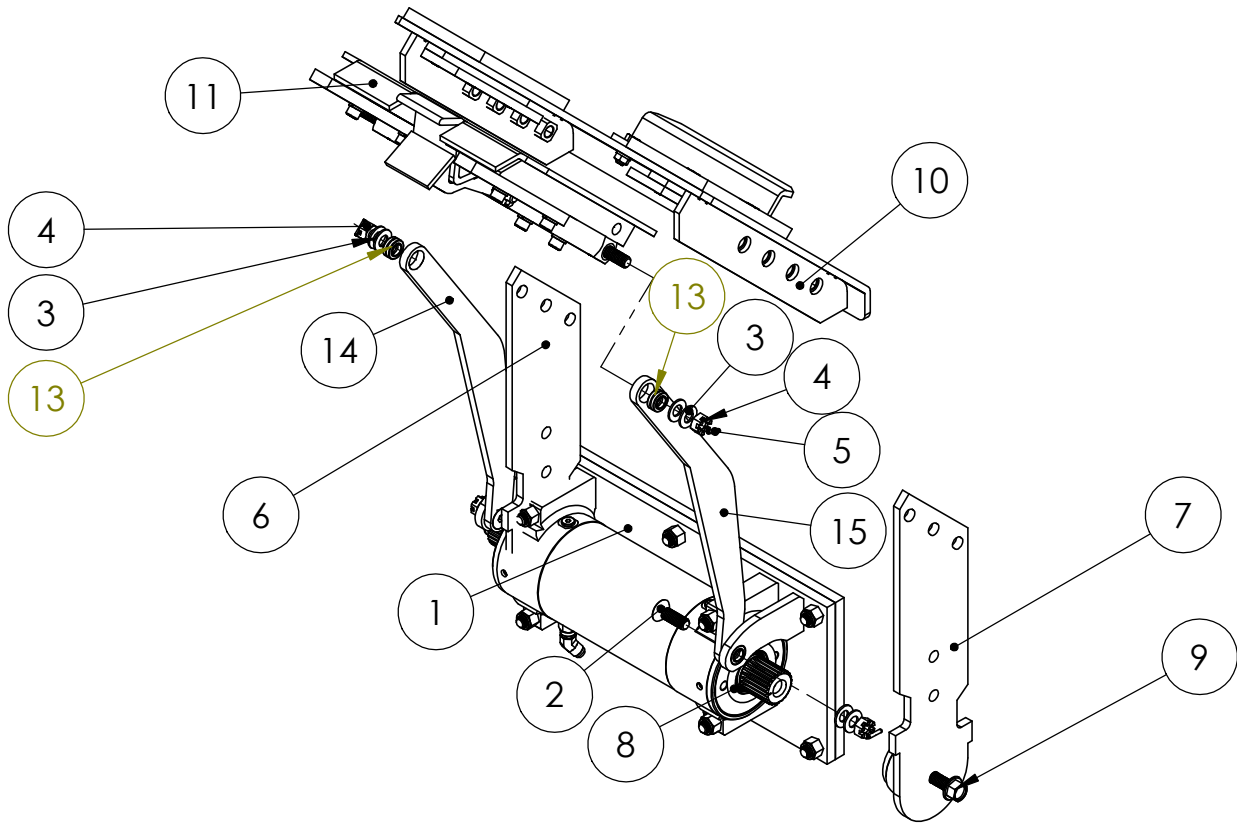
Lift Unit Installation

1. Truck must be empty, clean and parked on a level surface before installation is started.
2. Remove all bumpers and running boards that will interfere with the location of the lift units. Relocate lower mounted tail lights as needed.
3. Measure and mark the centerline of the truck hopper. The centerline of the unit or units should be a minimum of 17" from the hopper centerline.
4. Hand valves should be mounted on the side of the hopper at the most convenient height for the operator and clear of the packer controls.
5. The top of the unit mounting plate should be tack welded in place at the height recommended on the envelope dimension sheet of the unit.
CAUTION: SEE NOTE BELOW PICTURE
6. All dimensions should be approved by the customer before final welding.
7. If the mounting plate extends more than 2" above the hopper, a brace should be added.



Mounting heights and locations are recommendations only. It is the responsibility of the installer to insure that the customer is satisfied with the height. Barker Products recommends that after the units are tacked in place, try the units with the can or cans the customer uses. The customer should approve your mount before final welding.

ITEM NO.	PART NUMBER	DESCRIPTION	EXPLODE/QTY.
1	BWA10620	MAINFRAME SUB ASSY	1
2	BW02145	LOCK BOLT FSHCS	2
3	BW02100	1/2" BELLEVILLE SPRING WASHER	8
4	XDE081300	1/2-13 SLOTTED NUT	4
5	BW02125	5/32 X 3/4 SPRING PIN	4
6	BW10645	LIFT ARM LEFT	1
7	BW10655	LIFT ARM RIGHT	1
8	BW07001	O-RING GREASE SEAL	2
9	XAE081312	1/2-13 X 1 1/2 FLANGED HHCS	2
10	BWA10630	LIFT PLATE SUB ASSY	1
12	BW10000	SLIDE LINK SUB ASSY	1
13	BW99308	1/2" SPHERICAL BEARING	2
14	BW10661	SLIDE LINK LEFT	1
15	BW10662	SLIDE LINK RIGHT	1



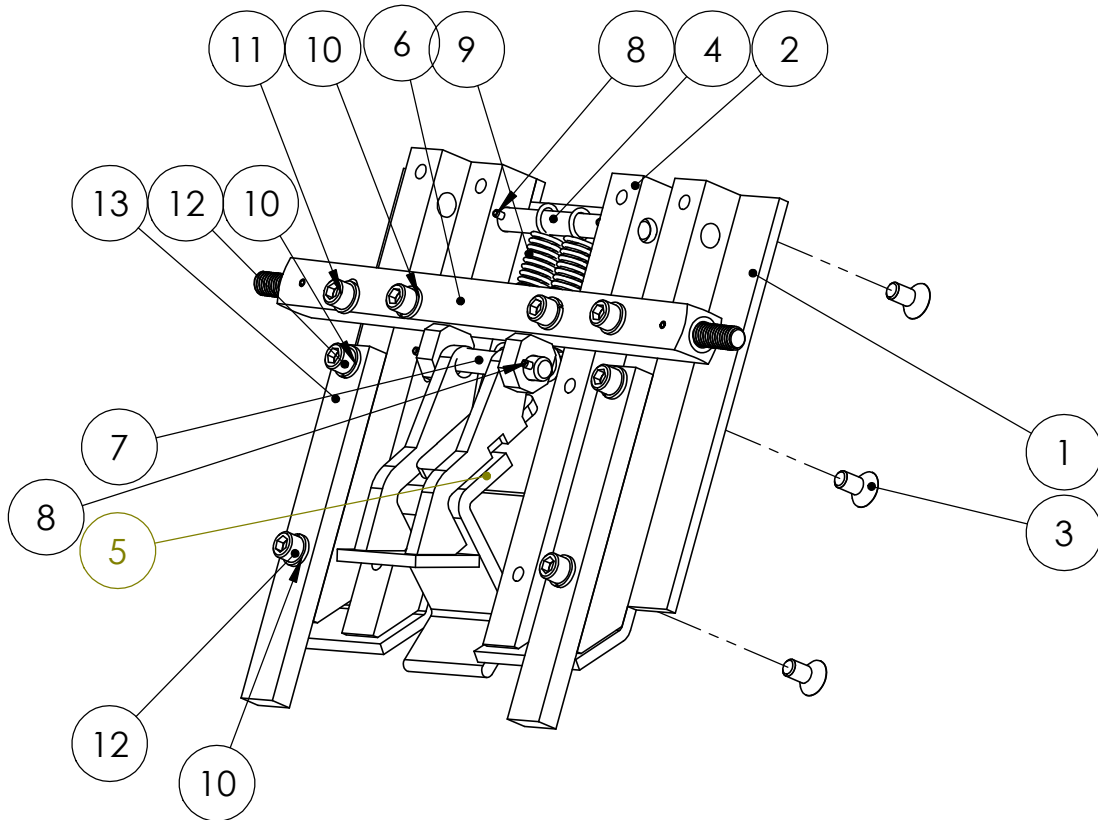
DO NOT SCALE DRAWING		HB15N2-4545 LIFT UNIT	
UNLESS OTHERWISE SPECIFIED: DIMENSIONS ARE IN INCHES TOLERANCES: FRACTIONAL ±1/32 ANGULAR: MACH ±1° BEND ±1° TWO PLACE DECIMAL ±0.010 THREE PLACE DECIMAL ±0.005		DRAWING NO BU07245	REV 00
SCALE: 1:8		WEIGHT: 171.496 #	SHEET 1 OF 1



BARKER PRODUCTS
1310 MILLER ROAD
GREENVILLE, SC
29607

DRAWN BY: R WYMAN
DATE: 12/14/2018
MATERIAL: NOTED

ITEM NO.	PART NUMBER	DESCRIPTION	EXPLODE VIEW/QTY.
1	BW10230	SLIDE PLATE	1
2	BW10240	SLIDE SUPPORT	4
3	XAD061606	3/8-16 X 3/4 FHSCS	12
4	BW10110	SPRING SHAFT	1
5	BW10680	HOOK	1
6	BW10060	SLIDE DRIVE	1
7	BW10100	HOOK SHAFT	1
8	BW02125	5/32 X 3/4 SPRING PIN	4
9	BW10120	HOOK SPRING	2
10	XEB061000	3/8" LOCK WASHER	8
11	XAB061612	3/8-16 X 1 1/2 SHCS	4
12	XAB061608	3/8-16 X 1 SHCS	4
13	BW10690	SLIDE EXTENSION	2



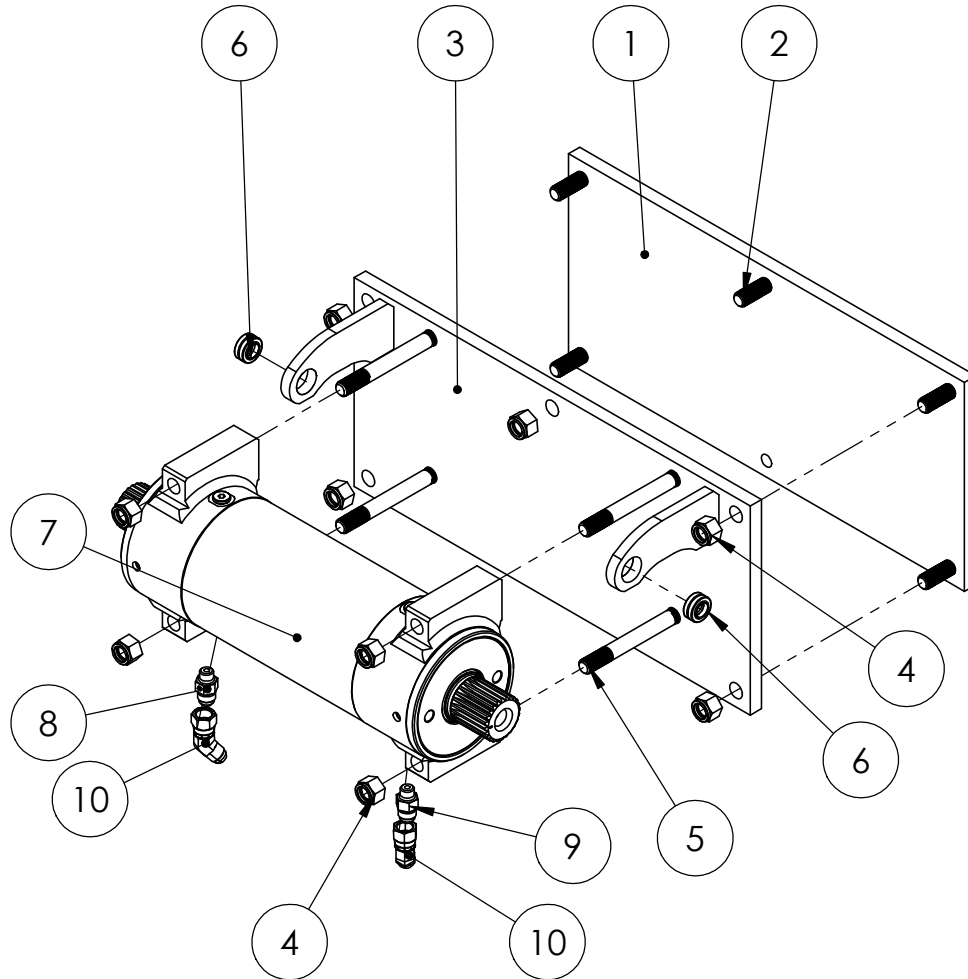
DO NOT SCALE DRAWING		SLIDE PARTS	
UNLESS OTHERWISE SPECIFIED: DIMENSIONS ARE IN INCHES		15K UNITS	
TOLERANCES:		DRAWING NO	
FRACTIONAL ±1/32		BW10000	
ANGULAR: MACH ±1° BEND ±1°		REV	
TWO PLACE DECIMAL ±0.010		00	
THREE PLACE DECIMAL ±0.005		SCALE: 1:4	WEIGHT: 21.737 #
		SHEET 1 OF 1	



BARKER PRODUCTS
 1310 MILLER ROAD
 GREENVILLE, SC
 29607

DRAWN BY: R WYMAN
 DATE: 1/10/2019
 MATERIAL: NOTED

ITEM NO.	PART NUMBER	DESCRIPTION	EXPLODE/QTY.
1	BW17525	MOUNT PLATE - N	1
2	BW07140	PLATE STUD	5
3	BW10620	MAINFRAME	1
4	XDC082000	1/2-20 NYLOK NUT	9
5	BW07125	ACTUATOR MOUNT STUD	4
6	BW99308	1/2" SPHERICAL BEARING	2
7	BW07000	15K ACTUATOR	1
8	BV00053	093 X 6T4S ORIFICE FITTING	1
9	BR03825	6400-06-04 M TUBE X M ORING	1
10	BR04842	6502-06-06 MJ-FJS 45 DEG	2



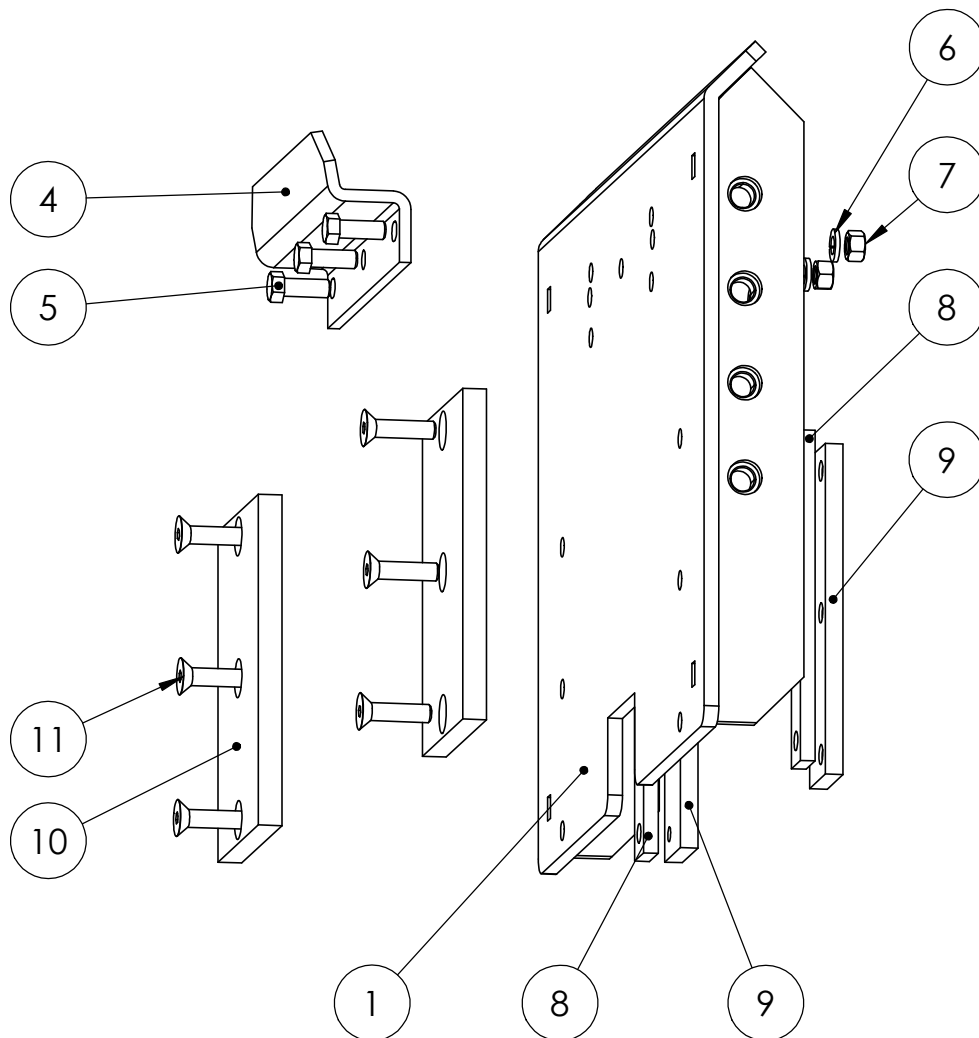
DO NOT SCALE DRAWING		MAINFRAME SUB ASSY HB15-45 UNITS	
UNLESS OTHERWISE SPECIFIED: DIMENSIONS ARE IN INCHES TOLERANCES: FRACTIONAL $\pm 1/32$ ANGULAR: MACH $\pm 1^\circ$ BEND $\pm 1^\circ$ TWO PLACE DECIMAL ± 0.010 THREE PLACE DECIMAL ± 0.005		DRAWING NO BWA10620	REV 00
SCALE: 1:6	WEIGHT: 59.783 #	SHEET 1 OF 1	



BARKER PRODUCTS
1310 MILLER ROAD
GREENVILLE, SC
29607

DRAWN BY: R WYMAN
DATE: 7/5/2017
MATERIAL: NOTED

ITEM NO.	PART NUMBER	DESCRIPTION	EXPLODE VIEW/QTY.
1	BW10630	LIFT PLATE	1
4	BW00800	SADDLE	1
5	XAA061608	3/8-16 X 1 HHCS	3
6	XEB061000	3/8 LOCKWASHER	3
7	XDA061600	3/8-16 HEX NUT	3
8	BW07330	SLIDE SPACER	2
9	BW07320	SLIDE CAP	2
10	BW10675	CAN SUPPORT	2
11	XAD061612	3/8-16 X 1 1/2 FSHCS	6



DO NOT SCALE DRAWING		LIFT PLATE SUB ASSY HB15-45	
UNLESS OTHERWISE SPECIFIED: DIMENSIONS ARE IN INCHES TOLERANCES: FRACTIONAL ±1/32 ANGULAR: MACH ±1° BEND ±1° TWO PLACE DECIMAL ±0.010 THREE PLACE DECIMAL ±0.005		DRAWING NO BWA10630	REV 01
SCALE: 1:4		WEIGHT: 35.559 #	SHEET 1 OF 1



BARKER PRODUCTS
1310 MILLER ROAD
GREENVILLE, SC
29607

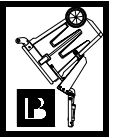
DRAWN BY: R WYMAN
DATE: 7/4/2017
MATERIAL: NOTED



1310 Miller Road
Greenville, SC 296078

Barker Products

Lift Unit Specialist



Phone:864-288-7384
Fax:864-297-1292

BPH SERIES LIFT UNIT WARRANTY

Barker Products warranties each new dump unit to be free of defects in material and workmanship under normal use and service for a period of 1 year or 2000 hours of operation, whichever comes first, from the date of delivery.

This warranty excludes any obligations by BARKER PRODUCTS for the cost of down time. BARKER PRODUCTS will not warranty any dump unit which has been subject to misuse, neglect, alteration, or damaged by an accident.

On any work not performed by BARKER PRODUCTS or it's representative, the customer will be responsible for freight charges on all parts shipped under warranty. Parts will be invoiced at time of shipment. Defective parts must be returned to BARKER PRODUCTS within 30 days. If the part is determined to be defective the customer will be credited for the original invoice.

Customer warranty labor charges must be approved by BARKER PRODUCTS in advance. If not contacted for approval, BARKER PRODUCTS will not be liable for the warranty labor charge.