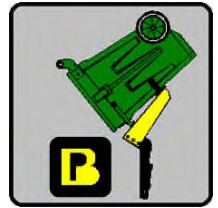




BP LIFTS

BY BARKER PRODUCTS
1310 Miller Road, Greenville, SC 29607
Phone:800-349-3149—Fax:864-297-1292



Model BPH-15 Series Lifts



- **Meets ANSI Z245 Type B Specifications**
- **Powered By The Dependable Smooth Acting Helical Rotary Actuator**
- **Splined Shafts To Eliminate Arm Movement And Wear**
- **EZ Bolt On Kit Standard**
- **Heavy Duty Cast Iron Bushings For Long Lift Cycle**
- **36" To 48" Mounting Heights Available**
- **16" Ground Clearance**



1310 Miller Road
Greenville, SC 29607

Barker Products

Lift Unit Specialist



Phone: 864-288-7384
Fax: 864-297-1292

BPH SERIES LIFT UNIT SPECIFICATIONS

THE FOLLOWING SPECIFICATIONS ARE INTENDED TO DESCRIBE EQUIPMENT FOR A SEMIAUTOMATIC REFUSE COLLECTION SYSTEM WHICH WILL UTILIZE HEAVY DUTY EIGHTY OR NINETY GALLON RESIDENTIAL CARTS AND HYDRAULIC LIFTING MECHANISMS (DUMPERS) INSTALLED ON REAR LOADING PACKER BODIES FOR DUMPING THESE CARTS.

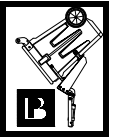
- 1. THE DUMPER SHALL CONSIST OF A STATIC SUB-FRAME ATTACHED TO THE TRUCK BODY AND A DYNAMIC LIFTING PLATE (SHELL), PAINTED SAFETY YELLOW.**
- 2. THE LIFTING FRAME SHALL BE ADAPTABLE AND INTERCHANGEABLE FOR EIGHTY OR NINETY GALLON WHEELED CARTS SUCH AS THOSE MANUFACTURED BY WASTEWHEELER, ZARN, TOTER, AMERI-KART, ETC.**
- 3. THE DUMPER SHALL HAVE A COMPLETE CYCLE TIME OF 8 TO 10 SECONDS.**
- 4. THE LIFTING FRAME IS CONTROLLED BY A THREE-POSITION, FOUR-WAY DIRECTIONAL CONTROL VALVE WITH A RATED CAPACITY OF 20 GALLONS PER MINUTE.**
- 5. ALL HYDRAULIC LINES SHALL MEET OR EXCEED REQUIREMENTS OF SAE 100R2 2-WIRE BRAID HYDRAULIC HOSE WITH A MAXIMUM WORKING PRESSURE OF 3500 PSI.**
- 6. THE LIFTING PLATE (DUMPER SHELL) SHALL BE CONSTRUCTED OF 3/8" STEEL PLATE AND MUST BE EASILY REPLACEABLE IF DAMAGED (ATTACHED TO THE STATIC FRAME USING GRADE 8 BOLTS).**
- 7. ALL MAIN PIVOT RODS SHALL BE 1 1/4" DIAMETER COLD ROLLED STEEL**
- 8. THE MAIN PIVOT SHAFT WILL BE EQUIPPED WITH CAST IRON BUSHINGS AND HAVE SCREW IN GREASE FITTINGS .**
- 9. THE LOWER LOCKING CATCH ON THE LIFTING FRAME IS MECHANICALLY OPERATED SO THAT IT SECURELY LATCHES ONTO THE LOWER BAR OF THE CART AS IT IS BEING LIFTED. THE CATCH MUST THEN BE CAPABLE OF HOLDING THE CART FIRMLY IN PLACE IN THE INVERTED POSITION, EVEN IF THE CART IS SHAKEN TO REMOVE ALL REFUSE FROM WITHIN. BEING MECHANICALLY OPERATED, THE LATCH MUST THEN RELEASE THE CART AS IT IS LOWERED. THE LATCH MECHANISM MUST BE BOLTED TO THE SHELL FOR EASE OF REPLACEMENT IF DAMAGED.**
- 10. THE LIFTING FRAME IS POWERED BY A HELICAL ROTARY ACTUATOR RATED FOR A MINIMUM OF 180 DEGREES ROTATION AND 3000 PSI OPERATING PRESSURE.**
- 11. THE STATIC FRAME WILL BE ATTACHED TO THE TRUCK BY MEANS OF A BOLT ON KIT. THE BOLT ON KIT ASSURES MINIMUM DOWN TIME FOR THE TRUCK REGARDLESS OF DAMAGE TO THE DUMPER.**



1310 Miller Road
Greenville, SC 296078

Barker Products

Lift Unit Specialist



Phone:864-288-7384
Fax:864-297-1292

BPH SERIES LIFT UNIT WARRANTY

Barker Products warranties each new dump unit to be free of defects in material and workmanship under normal use and service for a period of 1 year or 2000 hours of operation, whichever comes first, from the date of delivery.

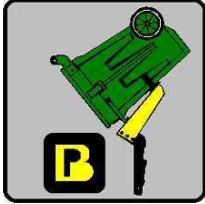
This warranty excludes any obligations by BARKER PRODUCTS for the cost of down time. BARKER PRODUCTS will not warranty any dump unit which has been subject to misuse, neglect, alteration, or damaged by an accident.

On any work not performed by BARKER PRODUCTS or it's representative, the customer will be responsible for freight charges on all parts shipped under warranty. Parts will be invoiced at time of shipment. Defective parts must be returned to BARKER PRODUCTS within 30 days. If the part is determined to be defective the customer will be credited for the original invoice.

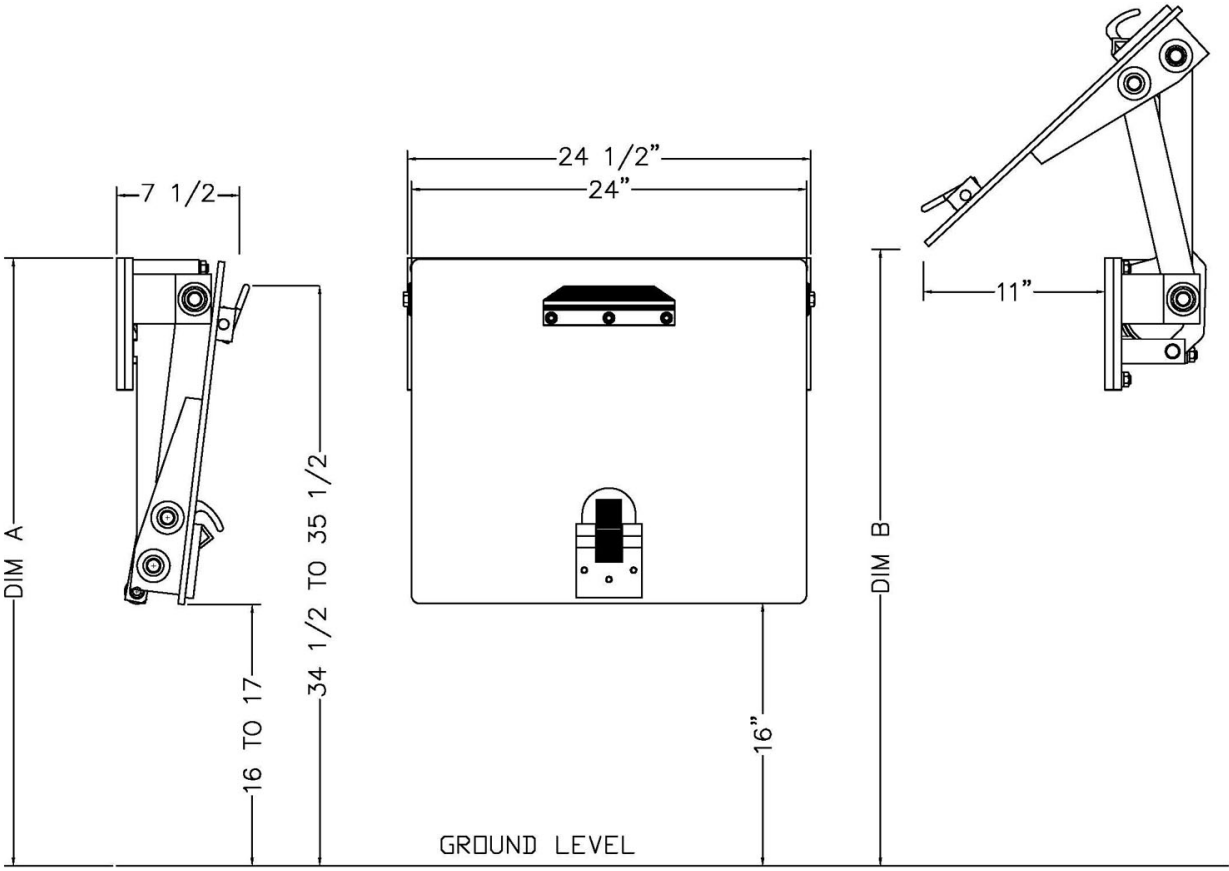
Customer warranty labor charges must be approved by BARKER PRODUCTS in advance. If not contacted for approval, BARKER PRODUCTS will not be liable for the warranty labor charge.



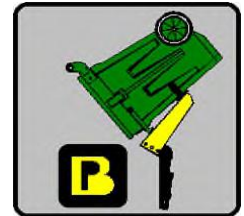
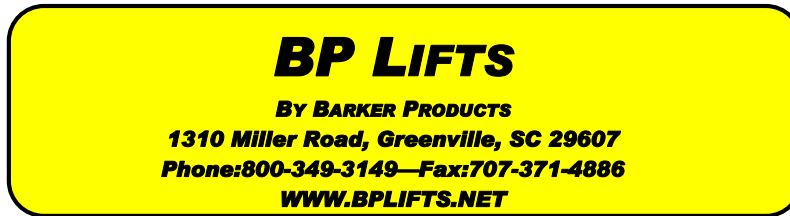
BP LIFTS
By Barker Products
1310 Miller Road, Greenville, SC 29607 Phone:800-349-3149



BPH-15 Envelope Dimensions

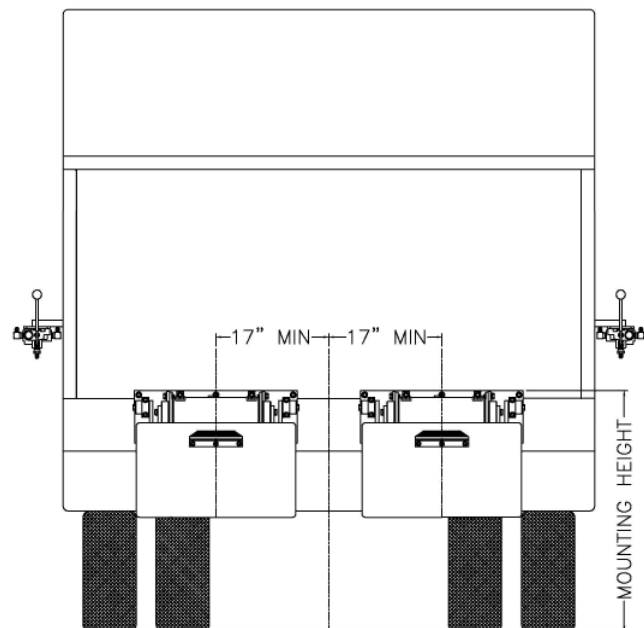


| Model | Dim A | Dim B |
|----------|------------|------------|
| BPH-1516 | 36" to 37" | 37" to 39" |
| BPH-1518 | 38" to 39" | 41" to 43" |
| BPH-1520 | 40" to 41" | 45" to 47" |
| BPH-1522 | 42" to 43" | 49" to 51" |
| BPH-1524 | 44" to 45" | 53" to 55" |
| BPH-1526 | 46" to 47" | 57" to 59" |
| BPH-1528 | 48" to 49" | 61" to 63" |

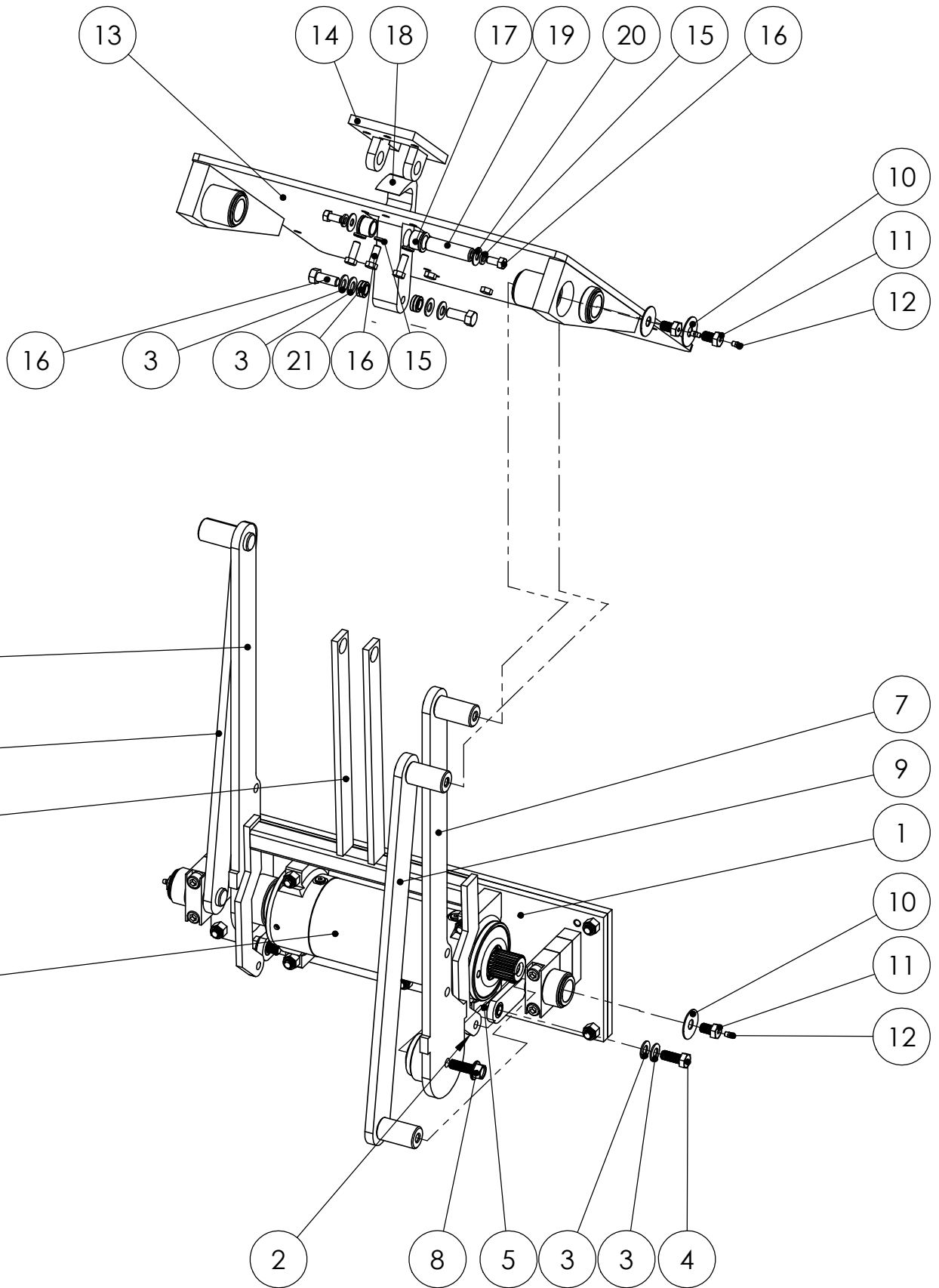


Lift Unit Installation

1. Truck must be empty, clean and parked on a level surface before installation is started.
2. Remove all bumpers and running boards that will interfere with the location of the lift units. Relocate lower mounted tail lights as needed.
3. Measure and mark the centerline of the truck hopper. The centerline of the unit or units should be a minimum of 17" from the hopper centerline.
4. Hand valves should be mounted on the side of the hopper at the most convenient height for the operator and clear of the packer controls.
5. The top of the unit mounting plate should be tack welded in place at the height recommended on the envelope dimension sheet of the unit.
CAUTION: SEE NOTE BELOW PICTURE
6. All dimensions should be approved by the customer before final welding.
7. If the mounting plate extends more than 2" above the hopper, a brace should be added.



Mounting heights and locations are recommendations only. It is the responsibility of the installer to insure that the customer is satisfied with the height. Barker Products recommends that after the units are tacked in place, try the units with the can or cans the customer uses. The customer should approve your mount before final welding.



BARKER PRODUCTS
 1310 MILLER ROAD
 GREENVILLE, SC
 29607

DRAWN BY: R WYMAN
 DATE: 11/26/2018
 MATERIAL: NOTED

DO NOT SCALE
 DRAWING
 UNLESS OTHERWISE SPECIFIED:
 DIMENSIONS ARE IN INCHES
 TOLERANCES:
 FRACTIONAL ±1/32
 ANGULAR: MACH ±1° BEND ±1°
 TWO PLACE DECIMAL ±0.010
 THREE PLACE DECIMAL ±0.005

BPH-1524 LIFT UNIT

DRAWING NO
 BU09400 PARTS

REV
 00

SCALE: 1:8 WEIGHT: 236.602 # SHEET 1 OF 2

| ITEM NO. | PART NUMBER | DESCRIPTION | QTY. |
|----------|-------------|-------------------------------|------|
| 1 | BWA09010 | H MAINFRAME SUB ASSY | 1 |
| 2 | BW09540 | HOOK LINK | 1 |
| 3 | BW02100 | 1/2" BELLEVILLE SPRING WASHER | 8 |
| 4 | BW02140 | 1/2-13 X 1 1/4 LOCK BOLT | 2 |
| 5 | BW02125 | 5/32 X 3/4 SPRING PIN | 2 |
| 6 | BW11340 | LEFT LIFT ARM | 1 |
| 7 | BW11345 | RIGHT LIFT ARM | 1 |
| 8 | XAE081312 | 1/2-13 X 1 1/2 FLANGED HHCS | 2 |
| 9 | BW09440 | GUIDE ARM BPH-1524 | 2 |
| 10 | BW07115 | BEARING CAP WASHER | 6 |
| 11 | BW07110 | BEARING CAP BOLT | 6 |
| 12 | BW01110 | GREASE FITTING - 1/4-28 SHORT | 6 |
| 13 | BWA09020 | LIFT PLATE SUB ASSY | 1 |
| 14 | BW00815 | HOOK MOUNT | 1 |
| 15 | XEB061000 | 3/8" LOCK WASHER | 5 |
| 16 | XAA081310 | 1/2-13 X 1 1/4 HHCS | 7 |
| 17 | BW00940 | HOOK BEARING | 2 |
| 18 | BW09040 | HOOK | 1 |
| 19 | BW00830 | HOOK SHAFT | 1 |
| 20 | XEA061000 | 3/8 FLAT WASHER | 2 |
| 21 | BW99308 | 1/2" SPHERICAL BEARING | 2 |

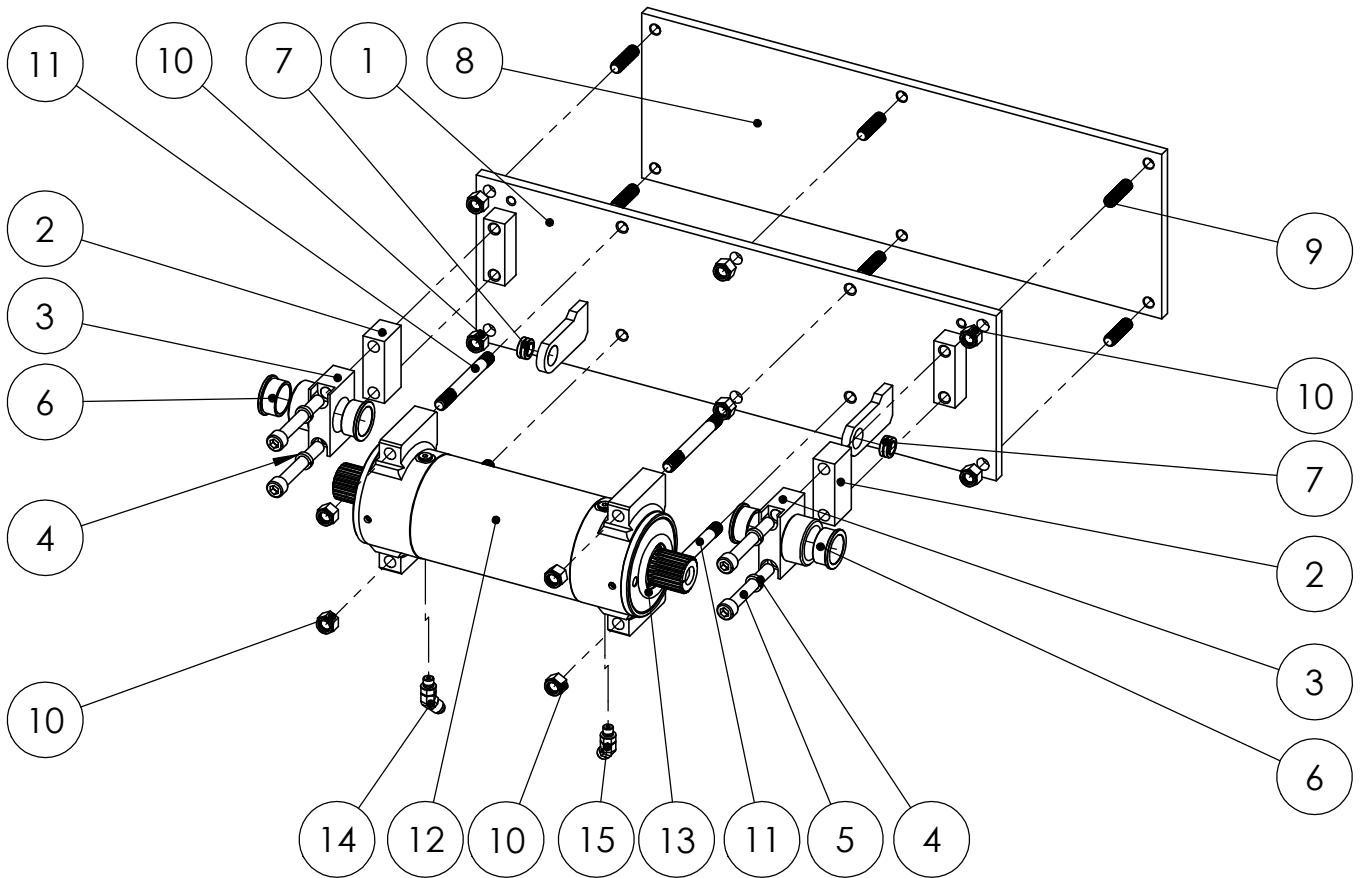


BARKER PRODUCTS
1310 MILLER ROAD
GREENVILLE, SC
29607

DRAWN BY: R WYMAN
DATE: 11/26/2018
MATERIAL: NOTED

| | | | |
|--|--|-----------------------------|--------------------------------|
| DO NOT SCALE DRAWING | | BPH-1524 LIFT UNIT | |
| UNLESS OTHERWISE SPECIFIED: DIMENSIONS ARE IN INCHES TOLERANCES: FRACTIONAL ±1/32 ANGULAR: MACH ±1° BEND ±1° TWO PLACE DECIMAL ±0.010 THREE PLACE DECIMAL ±0.005 | | DRAWING NO BU09400 PARTS | REV 00 |
| | | SCALE: 1:8 | WEIGHT: 236.602 # SHEET 2 OF 2 |

| ITEM NO. | PART NUMBER | DESCRIPTION | QTY. |
|----------|-------------|------------------------------|------|
| 1 | BW09010 | MAINFRAME - H-15 | 1 |
| 2 | BZ09016 | GUIDE ARM SPACER 1 1/2 | 2 |
| 3 | BW10080 | TOP BEARING | 2 |
| 4 | XEC0806080 | 1/2" HIGH COLLAR LOCK WASHER | 4 |
| 5 | XAB082028 | 1/2-20 X 3 1/2 SHCS | 4 |
| 6 | BW00934 | CAST FLANGE BUSHING | 4 |
| 7 | BW99308 | 1/2" SPHERICAL BEARING | 2 |
| 8 | BW07030 | MOUNT PLATE H | 1 |
| 9 | BW07140 | PLATE STUD | 6 |
| 10 | XDC082000 | 1/2-20 NYLOK NUT | 10 |
| 11 | BW07125 | ACTUATOR MOUNT STUD | 4 |
| 12 | BW07000 | 15K ACTUATOR | 1 |
| 13 | BW07001 | O-RING GREASE SEAL | 2 |
| 14 | BV00055 | 093 X 6T4S45 ORIFICE FITTING | 1 |
| 15 | BR05285 | 6802-06-04-NWO | 1 |



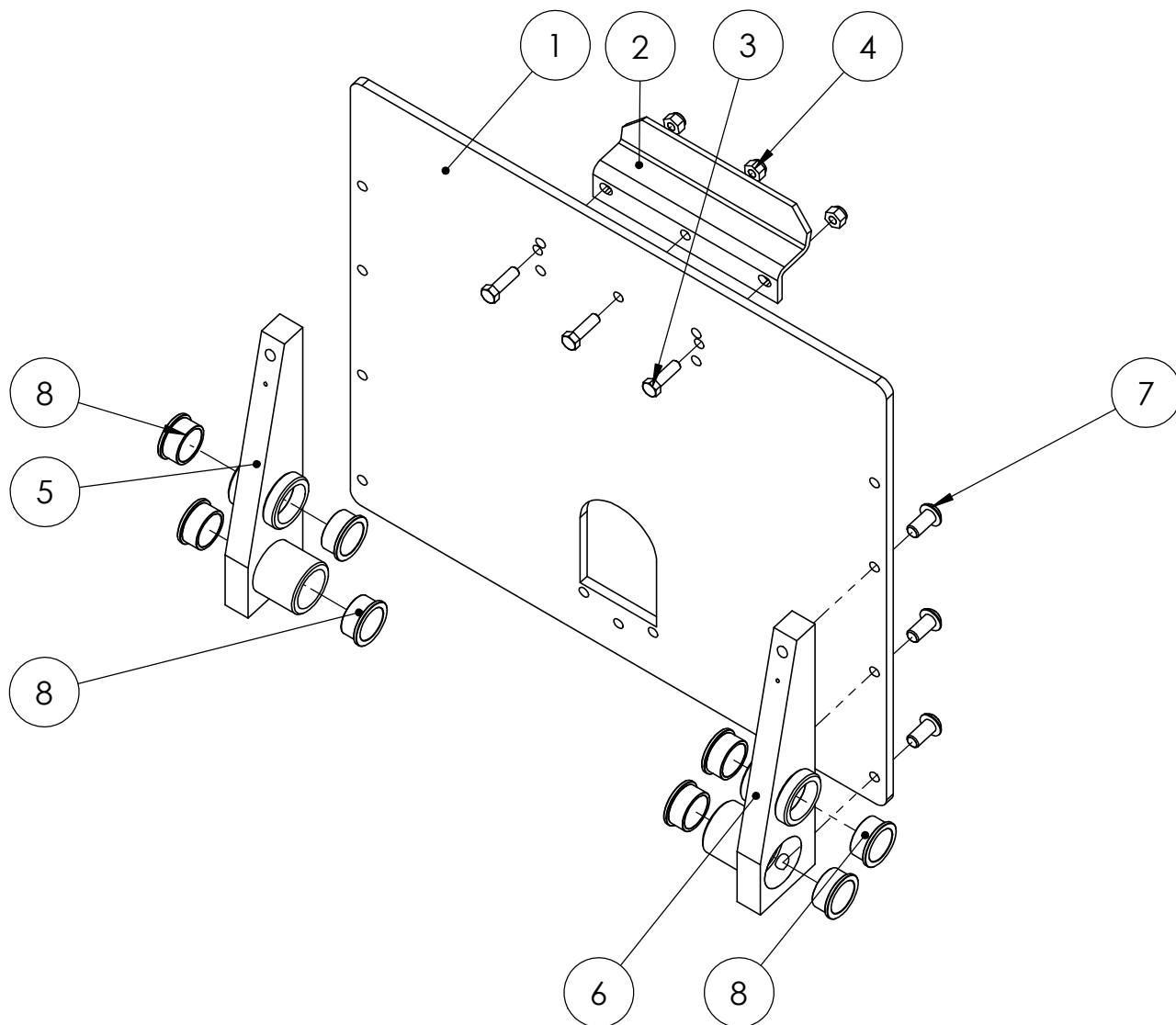
| | | | |
|--|--|------------------------------|--------------------------------|
| DO NOT SCALE DRAWING | | H MAINFRAME SUB ASSY | |
| UNLESS OTHERWISE SPECIFIED: DIMENSIONS ARE IN INCHES TOLERANCES: FRACTIONAL ±1/32 ANGULAR: MACH ±1° BEND ±1° TWO PLACE DECIMAL ±0.010 THREE PLACE DECIMAL ±0.005 | | DRAWING NO BWA09010 PARTS | REV 00 |
| MATERIAL: NOTED | | SCALE: 1:8 | WEIGHT: 113.993 # SHEET 1 OF 1 |



BARKER PRODUCTS
1310 MILLER ROAD
GREENVILLE, SC
29607

DRAWN BY: R WYMAN
DATE: 11/21/2018
MATERIAL: NOTED

| ITEM NO. | PART NUMBER | DESCRIPTION | EXPLODED PARTS VIEW/QTY. |
|----------|-------------|---------------------|--------------------------|
| 1 | BW09020 | LIFT PLATE - H | 1 |
| 2 | BW00800 | SADDLE | 1 |
| 3 | XAA061610 | 3/8-16 X 1 1/4 HHCS | 3 |
| 4 | XDC061600 | 3/8-16 NYLOK NUT | 3 |
| 5 | BW10040 | RIGHT LP MOUNT | 1 |
| 6 | BW10030 | LEFT LP MOUNT | 1 |
| 7 | XAC081308 | 1/2-13 X 1 BHCS | 6 |
| 8 | BW00934 | CAST FLANGE BUSHING | 8 |



| | | |
|--|------------------------------|--------------|
| DO NOT SCALE DRAWING UNLESS OTHERWISE SPECIFIED: DIMENSIONS ARE IN INCHES TOLERANCES: FRACTIONAL $\pm 1/32$ ANGULAR: MACH $\pm 1^\circ$ BEND $\pm 1^\circ$ TWO PLACE DECIMAL ± 0.010 THREE PLACE DECIMAL ± 0.005 | LIFT PLATE SUB ASSY | |
| | DRAWING NO BWA09020 PARTS | REV 00 |
| SCALE: 1:6 | WEIGHT: 67.134 # | SHEET 1 OF 1 |



BARKER PRODUCTS
1310 MILLER ROAD
GREENVILLE, SC
29607

DRAWN BY: R WYMAN
DATE: 8/10/2017
MATERIAL: NOTED