



BP LIFTS

BY BARKER PRODUCTS
1310 Miller Road, Greenville, SC 29607
Phone:800-349-3149—Fax:864-297-1292



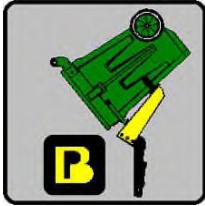
Model BPH2-15 Series Lifts



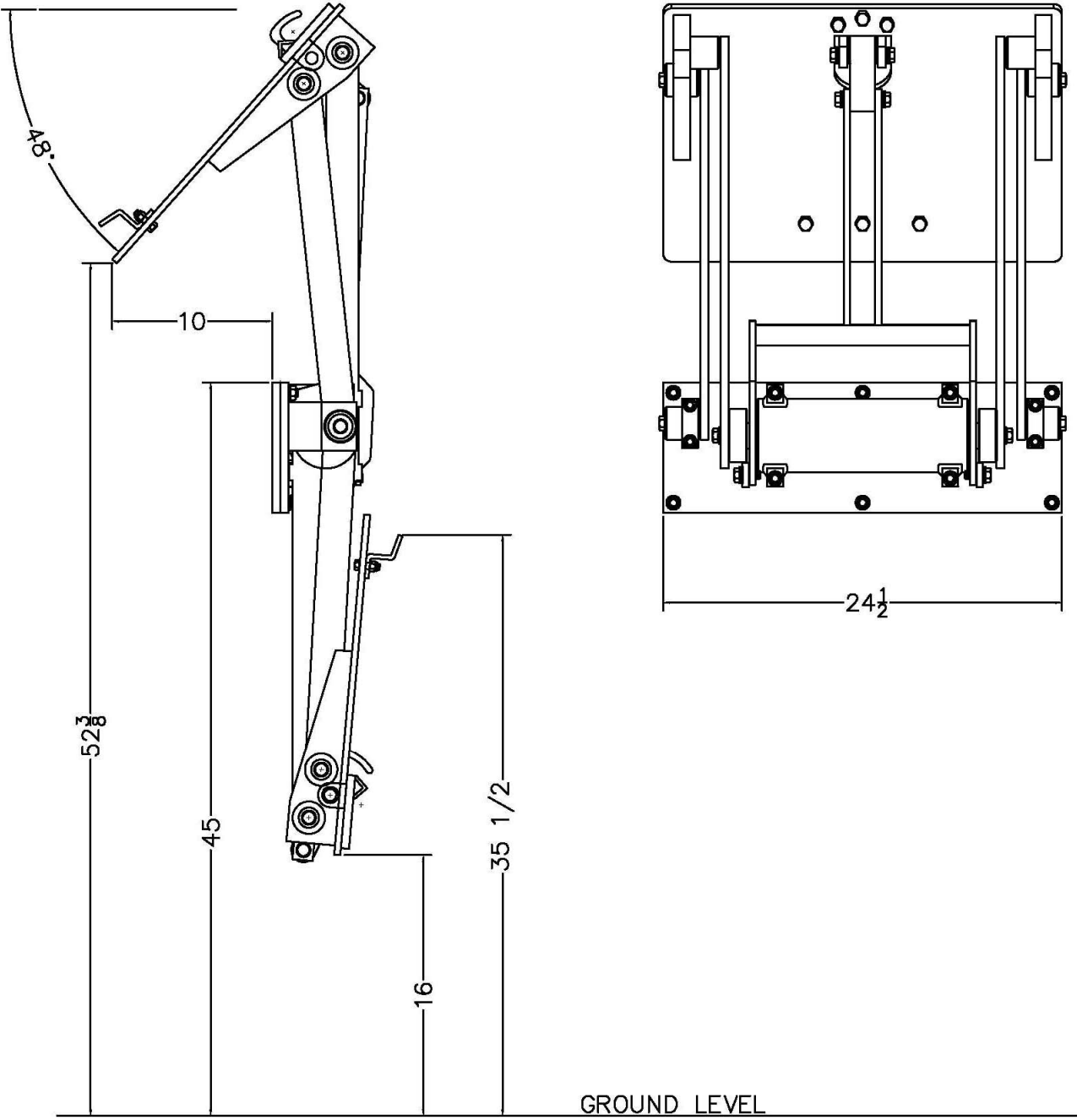
- **Meets ANSI Z245 Type B Specifications**
- **Powered By The Dependable Smooth Acting Helical Rotary Actuator**
- **Splined Shafts To Eliminate Arm Movement And Wear**
- **EZ Bolt On Kit Standard**
- **Heavy Duty Cast Iron Bushings For Long Lift Cycle**
- **37" To 45" Mounting Heights Available**
- **16" Ground Clearance**

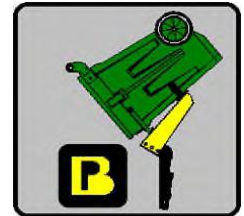
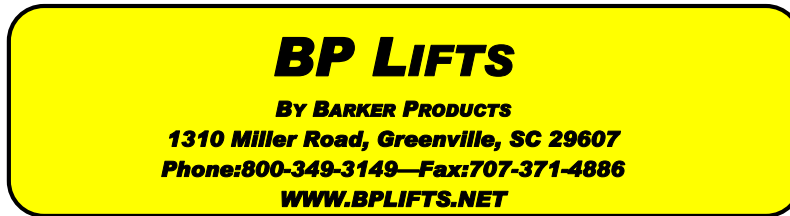


BP LIFTS
By Barker Products
1310 Miller Road, Greenville, SC 29607 Phone:800-349-3149



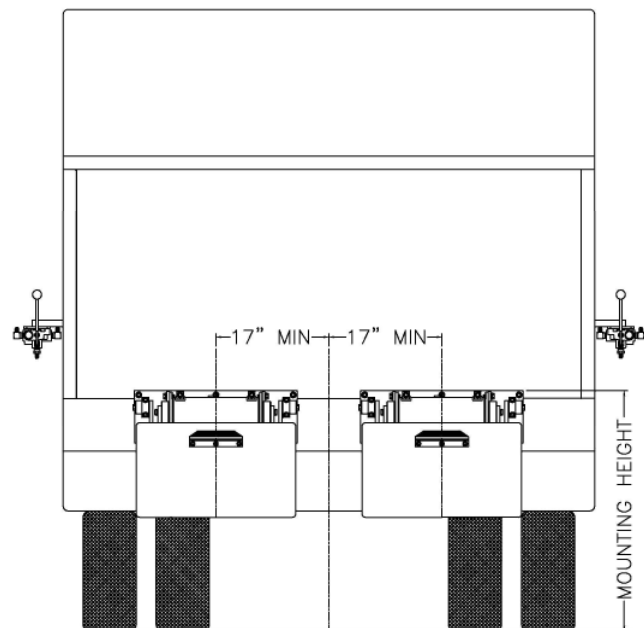
BPH2-1545 Envelope Dimensions



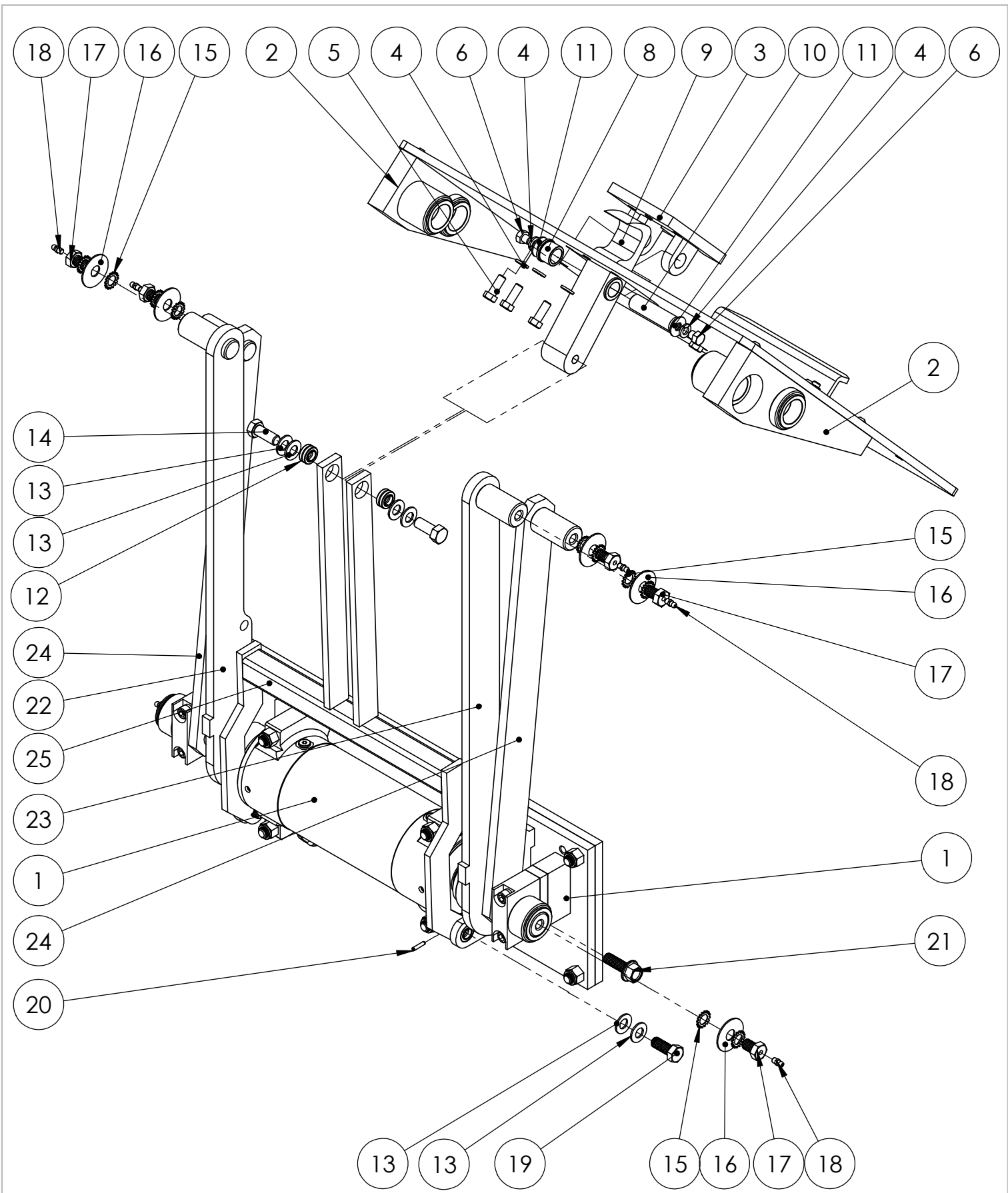


Lift Unit Installation

1. Truck must be empty, clean and parked on a level surface before installation is started.
2. Remove all bumpers and running boards that will interfere with the location of the lift units. Relocate lower mounted tail lights as needed.
3. Measure and mark the centerline of the truck hopper. The centerline of the unit or units should be a minimum of 17" from the hopper centerline.
4. Hand valves should be mounted on the side of the hopper at the most convenient height for the operator and clear of the packer controls.
5. The top of the unit mounting plate should be tack welded in place at the height recommended on the envelope dimension sheet of the unit.
CAUTION: SEE NOTE BELOW PICTURE
6. All dimensions should be approved by the customer before final welding.
7. If the mounting plate extends more than 2" above the hopper, a brace should be added.



Mounting heights and locations are recommendations only. It is the responsibility of the installer to insure that the customer is satisfied with the height. Barker Products recommends that after the units are tacked in place, try the units with the can or cans the customer uses. The customer should approve your mount before final welding.



| | | | |
|---|--|-----------------------------|--------------------------------|
| DO NOT SCALE DRAWING | | BPH2-1545 LIFT PARTS | |
| UNLESS OTHERWISE SPECIFIED: DIMENSIONS ARE IN INCHES TOLERANCES: FRACTIONAL $\pm 1/32$ ANGULAR: MACH $\pm 1^\circ$ BEND $\pm 1^\circ$ TWO PLACE DECIMAL ± 0.010 THREE PLACE DECIMAL ± 0.005 | | DRAWING NO BU09745 PARTS | REV 00 |
| MATERIAL: NOTED | | SCALE: 1:6 | WEIGHT: 235.831 # SHEET 1 OF 2 |



BARKER PRODUCTS
1310 MILLER ROAD
GREENVILLE, SC
29607

DRAWN BY: R WYMAN
DATE: 1/11/2019
MATERIAL: NOTED

| ITEM NO. | PART NUMBER | DESCRIPTION | EXPLODED PARTS/QTY. |
|----------|-------------------------------|-------------------------------|---------------------|
| 1 | BWA09070 | MAINFRAME SUB ASSY | 1 |
| 2 | BWA09020 | LIFT PLATE SUB ASSY | 1 |
| 3 | BW00815 | HOOK MOUNT | 1 |
| 4 | XEB061000 | 3/8" LOCK WASHER | 5 |
| 5 | XAA061608 | 3/8-16 X 1 HHCS | 3 |
| 6 | XAA061606 | 3/8-16 X 3/4 HHCS | 2 |
| 7 | XAA081310 | 1/2-13 X 1 1/4 HHCS | 1 |
| 8 | BW00940 | HOOK BEARING | 2 |
| 9 | BW09040 | HOOK | 1 |
| 10 | BW00830 | HOOK SHAFT | 1 |
| 11 | XEA061000 | 3/8 FLAT WASHER | 2 |
| 12 | BW99308 | 1/2" SPHERICAL BEARING | 2 |
| 13 | BW02100 | 1/2" BELLEVILLE SPRING WASHER | 8 |
| 14 | XAA081310 | 1/2-13 X 1 1/4 HHCS | 1 |
| 15 | BW02150 | 1/2" STAR WASHER EXTERNAL | 12 |
| 16 | BW07115 | BEARING CAP WASHER | 6 |
| 17 | BW07110 | BEARING CAP BOLT | 6 |
| 18 | BW01110 | 1/4-28 GREASE FITTING SHORT | 6 |
| 19 | BW02140 | 1/2-13 X 1 1/4 LOCK BOLT | 2 |
| 20 | BW02125 | 5/32 X 3/4 SPRING PIN | 2 |
| 21 | XAE081312 | 1/2-13 X 1 1/2 FLANGED HHCS | 2 |
| 22 | BW11340 | LEFT LIFT ARM | 1 |
| 23 | BW11345 | RIGHT LIFT ARM | 1 |
| 24 | BW09745 | GUIDE ARM | 2 |
| 25 | BW09540 | HOOK LINK | 1 |
| 26 | external tooth lock washer_ai | | 1 |



BARKER PRODUCTS
1310 MILLER ROAD
GREENVILLE, SC
29607

DRAWN BY: R WYMAN
DATE: 1/11/2019
MATERIAL: NOTED

DO NOT SCALE
DRAWING
UNLESS OTHERWISE SPECIFIED:
DIMENSIONS ARE IN INCHES
TOLERANCES:
FRACTIONAL ±1/32
ANGULAR: MACH ±1° BEND ±1°
TWO PLACE DECIMAL ±0.010
THREE PLACE DECIMAL ±0.005

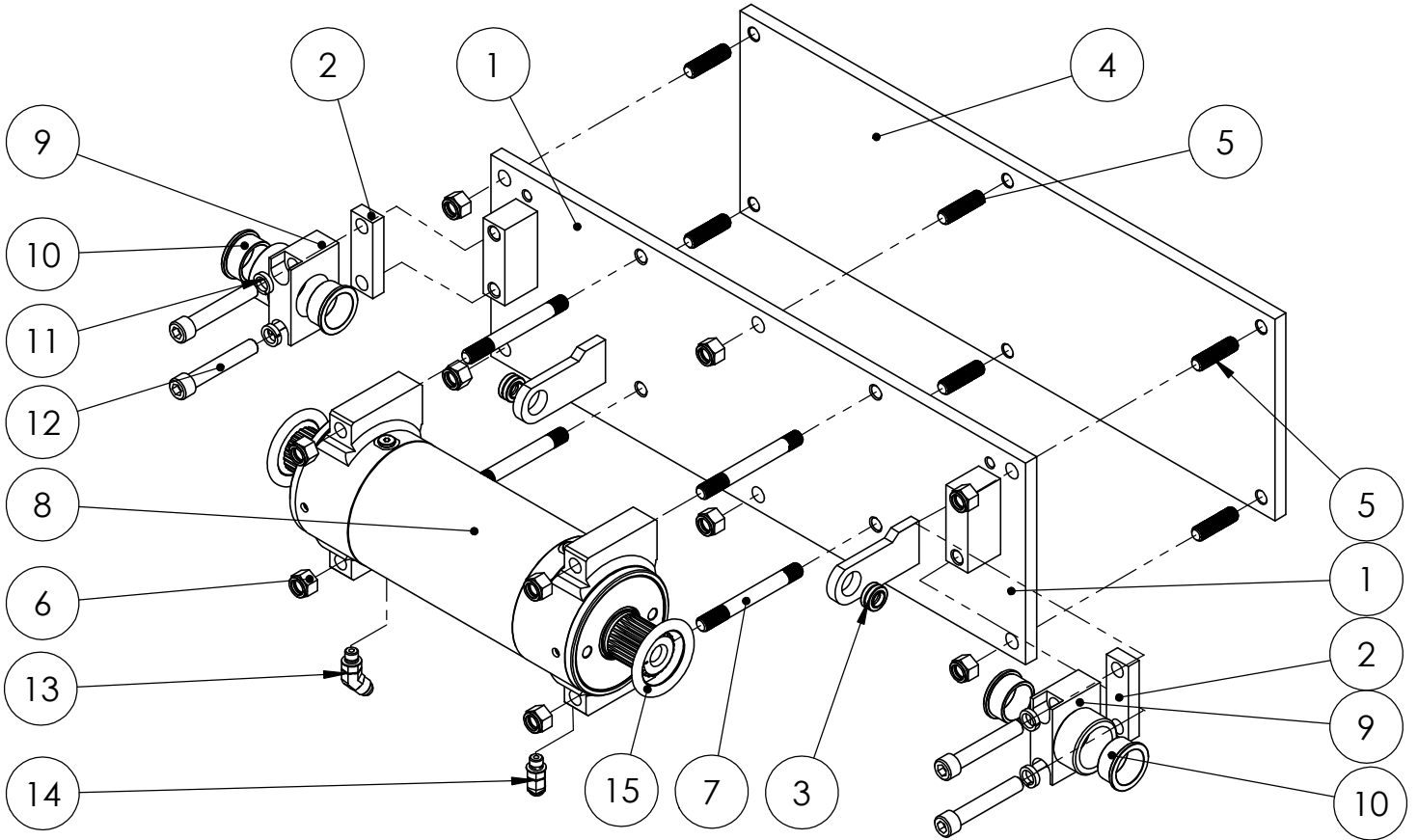
BPH2-1545 LIFT PARTS

DRAWING NO
BU09745 PARTS

REV
00

SCALE: 1:1 WEIGHT: 235.831 # SHEET 2 OF 2

| ITEM NO. | PART NUMBER | DESCRIPTION | MAINFRAME PARTS EXPLODED/QTY. |
|----------|-------------|------------------------------|-------------------------------|
| 1 | BW09070 | MAINFRAME - H2-15 | 1 |
| 2 | BZ09014 | GUIDE ARM SPACER | 2 |
| 3 | BW99308 | 1/2" SPHERICAL BEARING | 2 |
| 4 | BW07030 | MOUNT PLATE H | 1 |
| 5 | BW07140 | PLATE STUD | 6 |
| 6 | XDC082000 | 1/2-20 NYLOK NUT | 10 |
| 7 | BW07125 | ACTUATOR MOUNT STUD | 4 |
| 8 | BW07000 | 15K ACTUATOR | 1 |
| 9 | BW10080 | TOP BEARING | 2 |
| 10 | BW00934 | CAST FLANGE BUSHING | 4 |
| 11 | XEC0806080 | 1/2" HC LOCK WASHER | 4 |
| 12 | XAB082024 | 1/2-20 X 3 SHCS | 4 |
| 13 | BV00055 | 093 X 6T4S45 ORIFICE FITTING | 1 |
| 14 | BR05285 | 6802-06-04-NWO | 1 |
| 15 | BW07001 | O-RING GREASE SEAL | 2 |



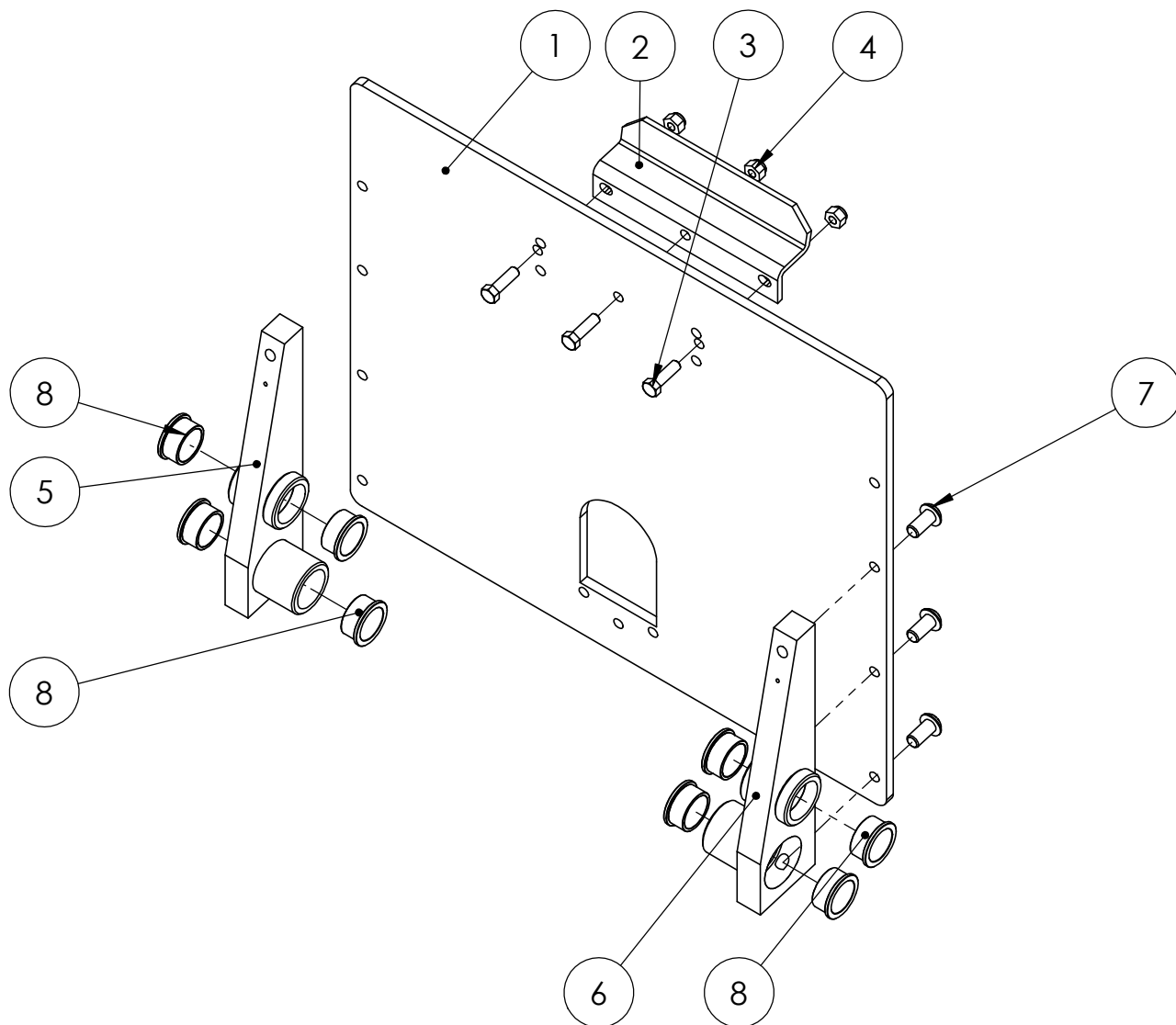
| | | | |
|---|--|-----------------------------------|-----------|
| DO NOT SCALE DRAWING | | MAINFRAME SUB ASSY H2-15 UNITS | |
| UNLESS OTHERWISE SPECIFIED: DIMENSIONS ARE IN INCHES TOLERANCES: FRACTIONAL $\pm 1/32$ ANGULAR: MACH $\pm 1^\circ$ BEND $\pm 1^\circ$ TWO PLACE DECIMAL ± 0.010 THREE PLACE DECIMAL ± 0.005 | | DRAWING NO BWA09070 | REV 00 |
| SCALE: 1:6 | | WEIGHT: 113.296 # SHEET 1 OF 1 | |



BARKER PRODUCTS
1310 MILLER ROAD
GREENVILLE, SC
29607

DRAWN BY: R WYMAN
DATE: 8/10/2017
MATERIAL: NOTED

| ITEM NO. | PART NUMBER | DESCRIPTION | EXPLODED PARTS VIEW/QTY. |
|----------|-------------|---------------------|--------------------------|
| 1 | BW09020 | LIFT PLATE - H | 1 |
| 2 | BW00800 | SADDLE | 1 |
| 3 | XAA061610 | 3/8-16 X 1 1/4 HHCS | 3 |
| 4 | XDC061600 | 3/8-16 NYLOK NUT | 3 |
| 5 | BW10040 | RIGHT LP MOUNT | 1 |
| 6 | BW10030 | LEFT LP MOUNT | 1 |
| 7 | XAC081308 | 1/2-13 X 1 BHCS | 6 |
| 8 | BW00934 | CAST FLANGE BUSHING | 8 |



| | | | |
|---|--|---------------------|--------------|
| DO NOT SCALE DRAWING | | LIFT PLATE SUB ASSY | |
| UNLESS OTHERWISE SPECIFIED: DIMENSIONS ARE IN INCHES | | DRAWING NO | |
| TOLERANCES: | | BWA09020 PARTS | |
| FRACTIONAL ±1/32 | | SCALE: 1:6 | REV 00 |
| ANGULAR: MACH ±1° BEND ±1° | | WEIGHT: 67.134 # | SHEET 1 OF 1 |
| TWO PLACE DECIMAL ±0.010 | | | |
| THREE PLACE DECIMAL ±0.005 | | | |



BARKER PRODUCTS
1310 MILLER ROAD
GREENVILLE, SC
29607

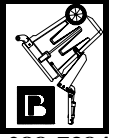
DRAWN BY: R WYMAN
DATE: 8/10/2017
MATERIAL: NOTED



1310 Miller Road
Greenville, SC 296078

Barker Products

Lift Unit Specialist



Phone:864-288-7384
Fax:864-297-1292

BPH SERIES LIFT UNIT WARRANTY

Barker Products warranties each new dump unit to be free of defects in material and workmanship under normal use and service for a period of 1 year or 2000 hours of operation, whichever comes first, from the date of delivery.

This warranty excludes any obligations by BARKER PRODUCTS for the cost of down time. BARKER PRODUCTS will not warranty any dump unit which has been subject to misuse, neglect, alteration, or damaged by an accident.

On any work not performed by BARKER PRODUCTS or it's representative, the customer will be responsible for freight charges on all parts shipped under warranty. Parts will be invoiced at time of shipment. Defective parts must be returned to BARKER PRODUCTS within 30 days. If the part is determined to be defective the customer will be credited for the original invoice.

Customer warranty labor charges must be approved by BARKER PRODUCTS in advance. If not contacted for approval, BARKER PRODUCTS will not be liable for the warranty labor charge.